

SPLENDIDA

SPLENDIDA THE OFFICIAL MAGAZINE OF SEA PROS YACHTS N°12 - WINTER 2018 - 2019



DESTINATION
Lap Land

STREET ART
Urban
Intervention

EDITOR'S CHOICE
Riva 66 Ribelle

YACHT REGISTRATION
Your different Choices

EDITORIAL

Winter 2018 - 2019 | Issue No12



Published by
Sea Pros Yachts
www.seapropros.com

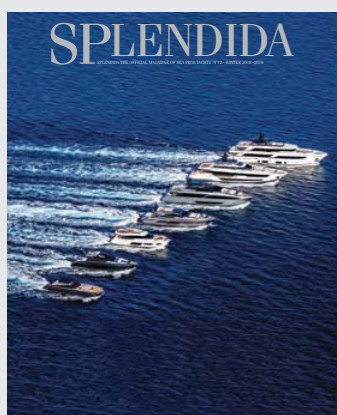
Executive Editor
Charles Maaraoui

Contributing Editor
Andrée Sahyoun

Sales & Marketing
Sea Pros Yachts
Lebanon

Art Direction
Tanya Salem

Printing
Arab Printing Press



Legends and traditions. They're born of a yearning for origins. They idealize people and events, and serve to promote identity and community. The undisputable legend in the Boating Industry is Riva.

Its newest born, the Riva 66' Ribelle, ready to write a new chapter in the history of boating, with its new hull streamline profile, its innovative stern features, stainless steel fairleads, cockpit steps submerged when moving the swimming platform, framework of stylistic and functional optimization, make a further element of uniqueness.

In this issue you will discover more boat novelties, as well as very interesting articles among them exciting and magical destinations, other informative news, and colorful artwork.

You will also discover our new Technohull 45', the new concept of using your big water toys towing them while cruising from one place to another, enabling you to transfer yourself and guests from your boat to restaurants and unreachable islands in a very fast and comfortable way, and at the same time saving extremely valuable space on board the mother ship.

Happy Holidays to All,

Alain Maaraoui

President Sea Pros Yachts

SEA PROS BRANCHES

Lebanon
> Sea Pros Yachts building
Dbayeh, Main Highway
Tel: +961 4 411 555
Fax: +961 4 411 666
Mob: +961 3 407 600

Kuwait
Hamra Tower 66th floor
Jaber Al Mubarak Street
Kuwait City
Tel: + 965 65078224

Saudi Arabia
King's Road Tower - Ground floor
King's Road - Jeddah
Tel: + 966 12 606 8783
Mob: + 966 54 182 0636

CONTENTS



Winter 2018 - 2019 Issue No12

- WHAT'S UP
4 **Upcoming Major Events**
- WHAT'S HAPPENING
6 **Latest Boating News**
- EDITOR'S CHOICE BOAT
10 **Riva 66' Ribelle**
The new high-tech sport flybridge
- LINES
18 **The Ferretti yachts 850**
Luxury, power and elegance
take centre-stage
28 **Custom Line Navetta 42M**
The biggest Navetta ever
34 **Pershing 62**
Intense performance and refined
aesthetic choices for a sport and
elegant yacht
42 **CRN 50**
Latona's endless beauty
52 **Itama 75**
A myth evolution
56 **Regal LS4 & LS6**
The new Bowriders and Cuddy line
58 **Technohull Omega 45**
Offshore performance
and high-quality finishing

10 RIVA 66' RIBELLE



18 FERRETTI YACHTS 850



42 LATONA'S ENDLESS BEAUTY



70 STREET ART



80 AURORA BOREALIS



84 AIR RACING



88 HEALING SONGS OF DOLPHINS



96 MAGICAL SITES



FEATURE

- 62 **Registering a Yacht or a boat**
The choice is yours...
- 64 **Porsche SUV with E-performance and new comfort options**
New Cayenne now available as a plug-in hybrid
- 68 **Le Yacht Club - Beirut**
Discover a home away from home

IN THE SPOT

- 70 **Street Art**
Urban Intervention
- 80 **Aurora Borealis**
Dawn, morning light
- 84 **Air Racing**
Exhilarating emotions
- 88 **Healing songs of Dolphins**
Something magical in the waters
- 92 **Vegan chefs**
Gastronomy is an art

HOSPITALITY

- 94 **Le Gray, Beirut**
Villegiature Awards 2018

DESTINATION

- 96 **Magical sites**
That really exist
- 102 **Lapland**
Land of the midnight sun

PRE-OWNED

- 106 **Boats for Sale**

LISTING

- 108 **Sea Pros Brands**
Your dream, our passion

WHAT'S UP?

UPCOMING MAJOR EVENTS



MIAMI

14th – 18th February 2019

The 31st Annual Miami Yacht Show, the city's premier luxury yacht show, will be taking place in its new location on Biscayne Bay between the Venetian and MacArthur causeways.

As one of the most attended and influential boating events in the world with an economic impact exceeding \$850 million, the iconic Miami Boat Show draws more than 100,000 people to the Magic City annually and provides an island oasis to enjoy the boating lifestyle.

The 2019 Miami Boat Show, promises an experience for buyers and dreamers alike, showcasing thousands of the newest boats and sailboats – from yachts and catamarans, to offshore fishing boats and family cruisers, plus the latest marine technology, gear and accessories from more than 1,000 exhibitors.

In addition to the thousands of boats and boating products for sale, 2019 Miami Boat Show highlights include plenty of opportunities to get out on the water – from test drives to boating lessons; an exclusive VIP experience with private access to the show's VIP lounge; the return of Strictly Sail Miami; and top of the line food and beverage options.

KUWAIT

26th – 30th March 2019

The Kuwait Yacht Show will take place at its usual venue the Marina Crescent in Kuwait City, Kuwait.

Kuwait's annual yacht show brings together a mix of yachts, boats, marine equipment and products, complementing the marine lifestyle, and is considered as one of the most awaited events in the nation. With the first day of the show open exclusively for VIP guests (as last year), the show is expected to attract over 10,000 visitors, boat owners, yachting professionals and luxury lifestyle aficionados.





DUBAI

26th February – 2nd March 2019

The Dubai International Boat Show will host an impressive line-up of exhibitors from the marine, luxury and lifestyle sectors and treat visitors to a spectacular array of entertainment. Live scuba diving demonstrations will run alongside an interactive sailing zone, a dedicated water sports area and free sailing and fishing trips. There will also be a super car promenade and retail village stocked with the latest nautical fashions. Last year's show attracted close to 30,000 visitors from 121 countries and DIBS 2019 is expected to welcome a similar number of show-goers through its doors.



BEIRUT

30th April – 4th May 2019

Beirut Boat, the International Boat and Super Yacht Show, will be held at the upscale Beirut Marina – Solidere. The 12th edition will host some of the internationally renowned yachting companies, superyacht builders and designers, nautical suppliers, in addition to well-known brands. The Beirut Boat will take place during 5 days from Tuesday, 30. April to Saturday, 04. May 2019 and is expected to attract around 20'000 visitors



WHAT'S HAPPENING?

LATEST BOATING NEWS



FERRETTI GROUP MONACO EVENT

7, 8 and 9 September 2018

The Ferretti Group lived up to its promises and offered its selected clients a memorable weekend, starting on Friday night with an exclusive and private concert by Sting who enchanted his audience with a series of top hits. The invited clients continued to be dazzled on Saturday and Sunday with a fleet of 25 yachts on display and a number of world premieres made available for visits and sea trials.



CANNES BOAT SHOW

11th to 16th September 2018

With 26 yachts on display, CL 120 and Navetta 42M from Custom Line, F450, F550, F780, F850 and F920 from Ferretti Yachts, Riva Iseo, Aquariva, Rivale 56, Ribelle 66, Bahamas 76, Domino Super 88, Corsaro 100, Dolce Vita 110, Pershing 108, Pershing 9X, Pershing 70, Pershing 62, Pershing 5X, and Itama 62 the Ferretti Group was by far the major yacht exhibitor more especially with the 5 world premieres from Custom Line, Riva and Ferretti Yachts.



MONACO YACHT SHOW

26th to 29th September 2018

The 28th Edition of the Monaco Yacht Show showcased 120 superyachts averaging above 50M, among which 40 brand new designs, unveiled by world leading shipyards, and the participation of 590 exhibitors.

While Port Hercules offered the main Superyachts display area, a new line of yachts was also displayed at Quai des Etats-Unis, Quai Jarlan hosting luxury tenders, prestige vehicles at Quai Antoine 1er, and marine high tech equipment at Darse Sud.

The Ferretti Group displayed the CL 42m Navetta, Custom Line 120, Riva 110 Dolce Vita, all 3 winners of the World Yacht Trophies 2018.



FERRETTI YACHTS CELEBRATING THEIR 50TH ANNIVERSARY IN VENICE

22nd to 24th June 2018

Three days of emotional events to celebrate the historic brand of the Italian boat industry, sealed by a flyover by Frecce Tricolori.

Great expectations for the debut of the new flybridge Ferretti Yachts 670 at the Arsenale Venice, June 20th 2018 – Ferretti Group has chosen Venice as the venue for the 50th anniversary of Ferretti Yachts, which took place between Piazza San Marco and the Arsenale from June 22nd to 24th 2018.

Celebrations started with a gala dinner at Palazzo Ducale, in front of the evocative "Paradise" of Tintoretto, the largest canvas in the world, and the magnificent "Triumph of Venice crowned by the victory" of Veronese. From the ogival windows of Palazzo Ducale, exceptionally donated for the occasion by the generosity of the City of Venice, guests will attend a parade of the entire Ferretti Yachts fleet that will sail the waters of the San Marco basin in front of the most famous square in the world. At 7:45pm, thanks to the extraordinary participation of Italian Air Force, the Pattuglia Acrobatica Nazionale, Frecce Tricolori, flew over the city and Piazza San Marco. The sky of Venice was colored by the tricolor in the anniversary of the "Battle of the Solstice", when exactly 100 years ago, in June 1918, the Italian Army heroically resisted the last Austro-Hungarian offensive and during which Major Francesco Baracca, "Asso degli Assi" of the Italian Aviation lost his life.

Thanks to the availability of the Navy, the Venice Arsenal was exceptionally open to the City and 11 wonderful yachts from 45 to 96 feet, including the new world premiere Ferretti Yachts 670, were moored within the Darsena Nuovissima.

The Venice Arsenal also played host to the second evening of the 50th anniversary: on Saturday, June 23rd, where guests attended a dinner made by Cipriani, myth of Venetian fine dining in the world, and the concert of a great Italian artist.

FORT LAUDERDALE YACHT SHOW

31st October to 4th November 2018

The largest boat show in the world took place at its usual venue in Fort Lauderdale, Florida, while its main entrance was moved to the North end along Sea breeze Boulevard.

With its 3 million ft² of exhibit space across 7 waterfront locations, the 5 day boat show attracted over 100'000 visitors, and approximately 1200 exhibitors with more than 1500 boats on display.

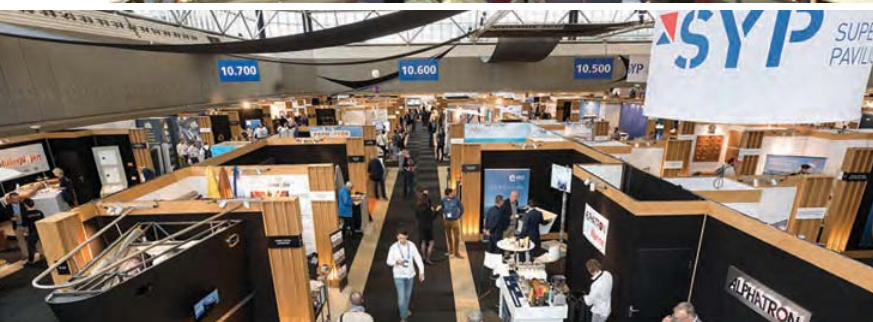


METS (AMSTERDAM)

13th to 15th November 2018

Definitely the place to be should you be looking for any boating equipment, accessory, innovation and or gadget, the METS (Marine Equipment Trade Show) has it all.

The 31st METSTRADE Show has once again broken its own records in terms of exhibitor and visitor numbers was home to 1600 exhibitors from 50 different countries displaying thousands of Marine products. The giant halls of RAI Amsterdam hosted three dedicated specialist areas: the SuperYacht Pavilion, the Marina & Yard Pavilion and the Construction Material Pavilion. The show was highlighted by the prestigious DAME Award 2018 won by Triskel Marine who created "Integrel", a system which exploits the gap between the propeller curve and optimum efficiency of a propulsion engine, to generate power which is then stored for AC and DC use. Other innovations included Scanstrut, a 12/24V Waterproof Wireless Charging system. Blue Guard Innovations: who has developed the world's first smart bilge pump switch with an integrated oil and fuel detector to help mitigate the risk of oil and fuel discharge from the vessel's bilge, The BG-One. Seakeeper's Introduction of the leaning post option for boats from 27 ft. NautiBuoy marine: Luxury floating platform and Seabob / water toys docking station.





Never stop improving.

The new **C-Class Coupé** shows that power and beauty can play together in harmony. An overall new sporty look underlines the agility of the new DYNAMIC BODY CONTROL, which provides three set-ups for one suspension.

To find out more, visit our website: www.mercedes-benz.com.lb

Mercedes-Benz
The best or nothing.



EDITOR'S CHOICE BOAT



An aerial photograph of a boat's wake on a deep blue ocean. The wake is a long, white, frothy trail that starts from the bottom left and extends towards the top right, curving slightly. The water around the wake is a vibrant blue with small, rhythmic ripples.

RIVA 66' RIBELLE

THE NEW HIGH-TECH SPORT FLYBRIDGE

Born where legend and technology intersect, 66' Ribelle is the new sport flybridge by Riva, ready to write a new chapter in the history of boating, design and luxury.



The art of sailing gains a new masterpiece with this extraordinary vessel, that combines the allure of a timeless style with the pleasure and comfort of countless innovative on-board features.

66' Ribelle, the flagship of the Sarnico shipyard, continues the evolutionary path that began with 56' Rivale: conceived as an entry level model in Riva's sport fly range, it aims to become the new benchmark in its market segment. Born through a collaboration between Officina Italiana Design, the atelier founded and headed by Mauro Micheli and Sergio Beretta, the Product Strategy Committee led by Mr. Piero Ferrari and the Ferretti Group Engineering Department, 66' Ribelle sets a new standard of excellence in combining style with functionality and beauty with technology.

EXTERIOR

The hull's streamlined profile – in the exclusive Blue Sapphire colouration, introduced here for the first time – features large glass windows on the hull and on the superstructure. The exterior lines draw inspiration from those of

the 76' Perseo, with the addition of new style elements in mahogany and polished stainless steel (which also serve technical purposes), that pay homage to both the history of the Sarnico shipyard and to the storied Riva tradition. Noteworthy elements include the aft wings, the garage door – fitted with a mahogany band with a stainless steel perimeter, above which is a mahogany and steel lifeline –, and the side lifelines of the superstructure, in mahogany with steel ends.

The stern features an innovative style detail: the platform is connected to the vessel's sideways, thus forming a single continuous element that rises all the way to the cockpit. Stainless steel fairleads for the main and secondary mooring lines provide a further element of uniqueness in this area.

Like on the 56' Rivale, the port side cockpit steps become partially submerged when moving the swimming platform, revealing other steps built into the hull and thus creating a single, extremely practical stairway for boarding and de-boarding. The garage can accommodate a Williams 345 tender and a Seabob.

The cockpit features a stern-side sun pad protected by



Pilot house

RIVA 66 RIBELLE

Technical Specifications

Engines/ Power	2 x MAN 12V 1550 – power 1550 mhp / 1140 kW at 2300 rpm
Displacement Laden	46.5 ton
Maximum speed	37 knots
Cruising speed	33 knots
Length Overall	20.54 M
Max Beam	5.29 M
Fuel Tank Capacity	3800 L
Water Tank Capacity	710 L



Bow area unmistakably Riva



the flybridge and a starboard dinette with a couch and mahogany table; the crew cabin, accessible from the main deck, is located below the sun pad and includes a single bed and a bathroom. The lounge's glass door with tilting window ensures a perfect continuity between the inner and outer spaces, creating a single seamless deck with no steps or obstacles. The space in the forward area has been exploited to its fullest potential, thanks to a large 7m² sun pad with a built-in backrest that ensures maximum comfort. The sun pad also offers generously-sized lockers.

Within a framework of stylistic and functional optimisation, all deck equipment was conceived to preserve the beauty of the vessel's lines while at the same time facilitating technical manoeuvres. Elements in high-gloss stainless steel protect parts of the hull and deck and can also be found aft, where the gate is seamlessly connected to the fairlead, to the point of being nearly invisible.

On the sport flybridge, accessible from the cockpit via a teak and steel stairway, is an aft sun pad with two chaise-longues fitted to the side of the fixed monkey bridge, which is enriched by elements in steel and mahogany. This entire area can be shielded from the sun through the awnings stored in their dedicated compartments.

Riva

NOTHING ELSE

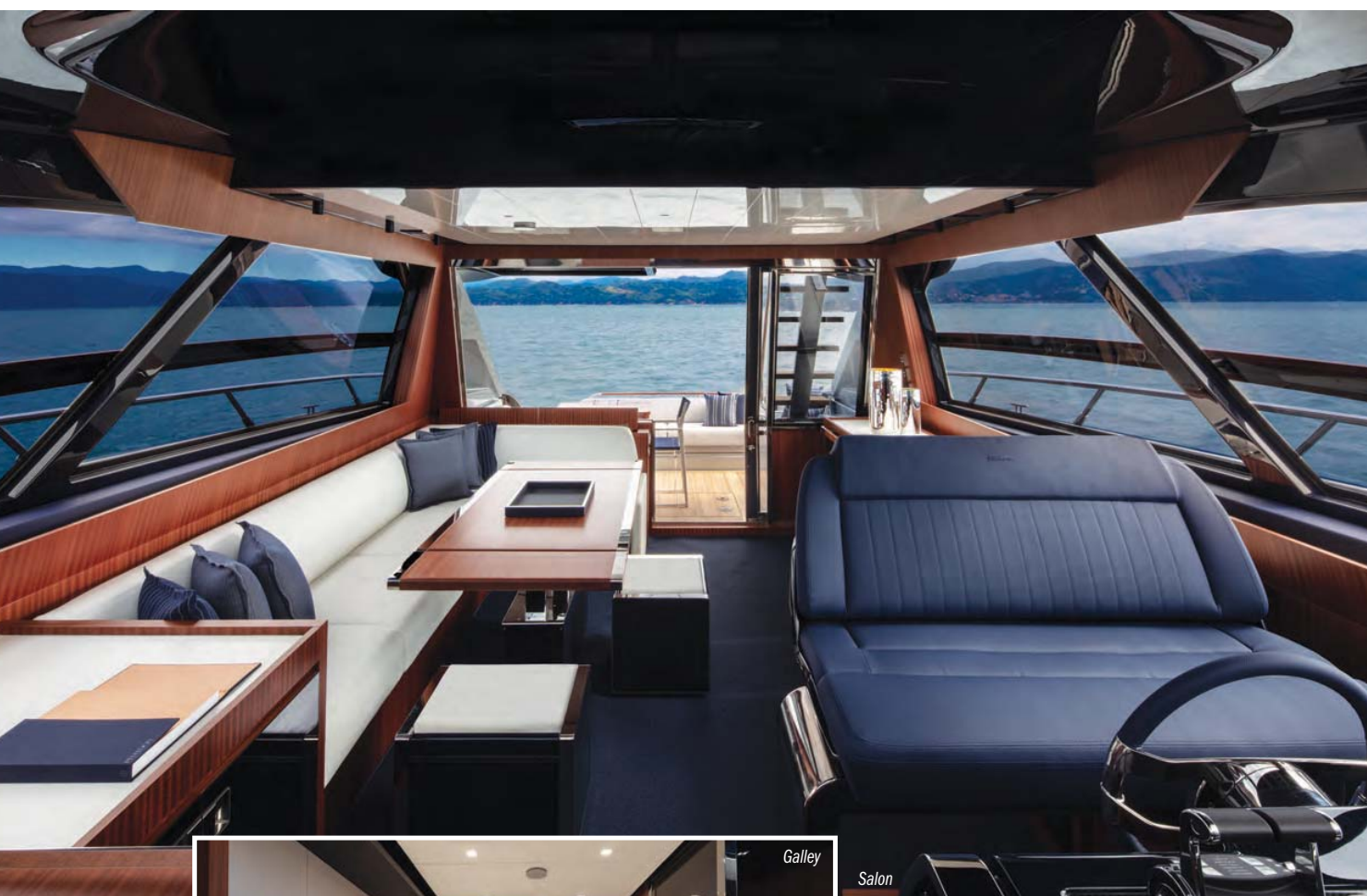


ISEO • AQUARIVA SUPER • RIVAMARE • 56' RIVALE • 63' VIRTUS • 66' RIBELLE • 76' PERSEO
76' BAHAMAS • 88' DOMINO SUPER • 88' FLORIDA • 100' CORSARO • 110' DOLCEVITA

A FERRETTI GROUP BRAND
www.riva-yacht.com

SEA PROS YACHTS
LEBANON | SAUDI ARABIA | KUWAIT | BAHRAIN
WWW.SEAPROS.COM

Riva
EXCLUSIVE DEALER



INTERIOR

The materials used for the interiors of the first 66' Ribelle unit are fully consistent with the Riva style, such as the opaque mahogany, the steel and lacquer in various shades of blue and white, as well as leather elements. Luxury brands that contributed to the interior design of this first unit include Penelopeoggi and Mastrotto for the leathers in the main deck and the owner's cabin, Mariaflora for the upholstery in the lounge and cabins and Redaelli for beddings and pillows.

The main deck stands out for the impressive 2.05 m height and the massive windows that let in loads of natural light. The present configuration features a large L-shaped couch on the starboard side, with a convertible coffee-dining table in opaque mahogany. Next to the couch is a storage cabinet, while along the whole left side is a large custom piece which also houses the drop-down TV. The two-person bridge towards the bow - with a helm station boasting carbon knobs and an exclusive frame in high-gloss stainless steel - is equipped with control, monitoring and navigation systems that feature touchscreen displays, including an innovative MAN-Boeing wide engine panel. Above the steering system, a sky light, that does not compromise the linearity of the design, reveals a dynamic air vent created on request.

Below deck, the standard layout features three cabins, including the owner's cabin, a VIP and a double. On the left-hand side, the cabin with two single beds has an en-suite bathroom with dual access, which allows it to double as a day toilet. The midship owner's cabin has a height of 2.05 metres, and offers a separate bathroom and three floor-to-ceiling wardrobes (on the port and starboard sides and in



Master bedroom & head



the centre). Stylish low furnishings, a longitudinal bed and a port-side sofa complete the cabin's interiors. The VIP cabin, located forward, reveals a similar design philosophy as the rest of the yacht. Below the stairway, to the starboard side, is a large open galley that faces a storage area which, on request, can be fitted with a washer and dryer.

ENGINES AND PERFORMANCE

The 66' Ribelle is powered by a pair of centreline V drive MAN V12 engines, each producing 1.550 MHP. With these engines it is possible to reach a maximum speed of 37 knots and a cruising speed of 33 knots (preliminary data). On request, it is possible to install a Seakeeper NG9 for maximum comfort when at anchor.



RIVA 66' RIBELLE LAYOUTS

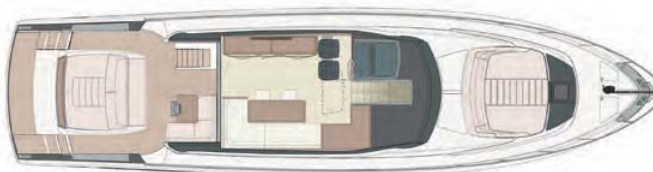
> 20,54 Meter



> Profile



> Fly deck



> Main deck



> Lower deck

LINES



THE FERRETTI YACHTS 850

LUXURY, POWER AND ELEGANCE TAKE CENTRE-STAGE

Rugged and seductive, Ferretti Yachts 850 dazzles you from the moment you set eyes upon it, thanks to its clean and dynamic profile featuring striking, clear-cut angles gives you a powerful and bold look.





Its stunning appearance is just the beginning: the yachting itself, combines extraordinary comfort with sophisticated design, making it all the more remarkable.

The Ferretti Yachts 850 is the product of the joint efforts of the Ferretti Group's Product Strategy Committee, Studio Zuccon International Project - for the design of the exteriors and the layout of the interiors - and the Group's Engineering Department, which handled naval design as well as the interior design.

EXTERNAL DESIGN

With a hull measuring 26 metres, and a construction length below 24 metres, the new flybridge can be registered as a pleasure craft. The two trapezoidal hull windows with integrated portholes are sleek and extra wide to make the most of the natural light and provide magnificent views from the inside.

The design of the main deck enhances the overall experience, thanks to a single full-height window which cuts through the entire superstructure, plus the large front and side dome at the raised helm station. The profile is completed by the flybridge with the roll bar in Vulcan Grey, the second colour of the brand and an effective contrast with the ivory white.

AFT AREA AND COCKPIT

The Ferretti Yachts 850 is equipped with a mechanism whereby the transom door swings open to provide a swimming platform, which becomes a beach area and can be lowered below the water surface, offering a large submersible platform for guests as well as a practical solution for the crew's tender moving operations (the garage is spacious enough to house a Williams 385).

The cockpit can be accessed from both sides and is furnished with a striking, multi-purpose sofa which, thanks to its collapsible backrest, can be used both as a chaise longue and to seat diners around the large outdoor table. On the starboard side towards the bow, fitted under the staircase leading to the flybridge, there are various storage compartments and an ice-maker, as well as the mooring controls. Just as in a maxi-yacht, access to the engine room is via a portside door.

MAIN DECK

The glazed sliding door leads into a 10-metre long open plan space with a lounge and a dining area. All the furniture and fittings redefine the architectural and design 'language' of yachting. The décor, chosen by the Group's Engineering Department working side by side with international trend research experts, represents a break with conventional stan-



*The multi purpose
garage / beach
area / submersible
swim platform*

FERRETTI YACHTS 850 LAYOUTS

> 26 Meter



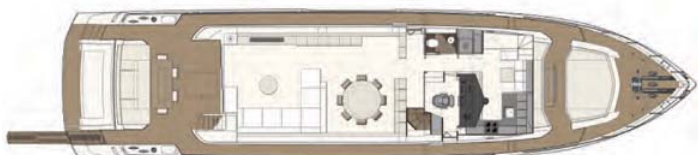
> Profile



> Profile - Hard top



> Sun deck



> Main deck



> Lower deck

dards of onboard furnishings.

The result is a living style in line with the latest developments in residential architecture, characterized by discreet minimalism and a soft, essential mood.

In contrast with the geometry of the superstructure, the interior is dominated by flat surfaces and linear paneling.

The use of perpendicular partitions, almost full-height glazed surfaces, light and pleated curtains, and freestanding furniture are typical elements of this ultra-contemporary metropolitan concept. The new yacht is fitted with design features by Minotti, in partnership with whom the use of accessories and the wood type and design of the built-in furniture were determined. The lounge is furnished with an L-shaped sofa, a coffee table and a TV area, and also includes a dining area with a striking round table.

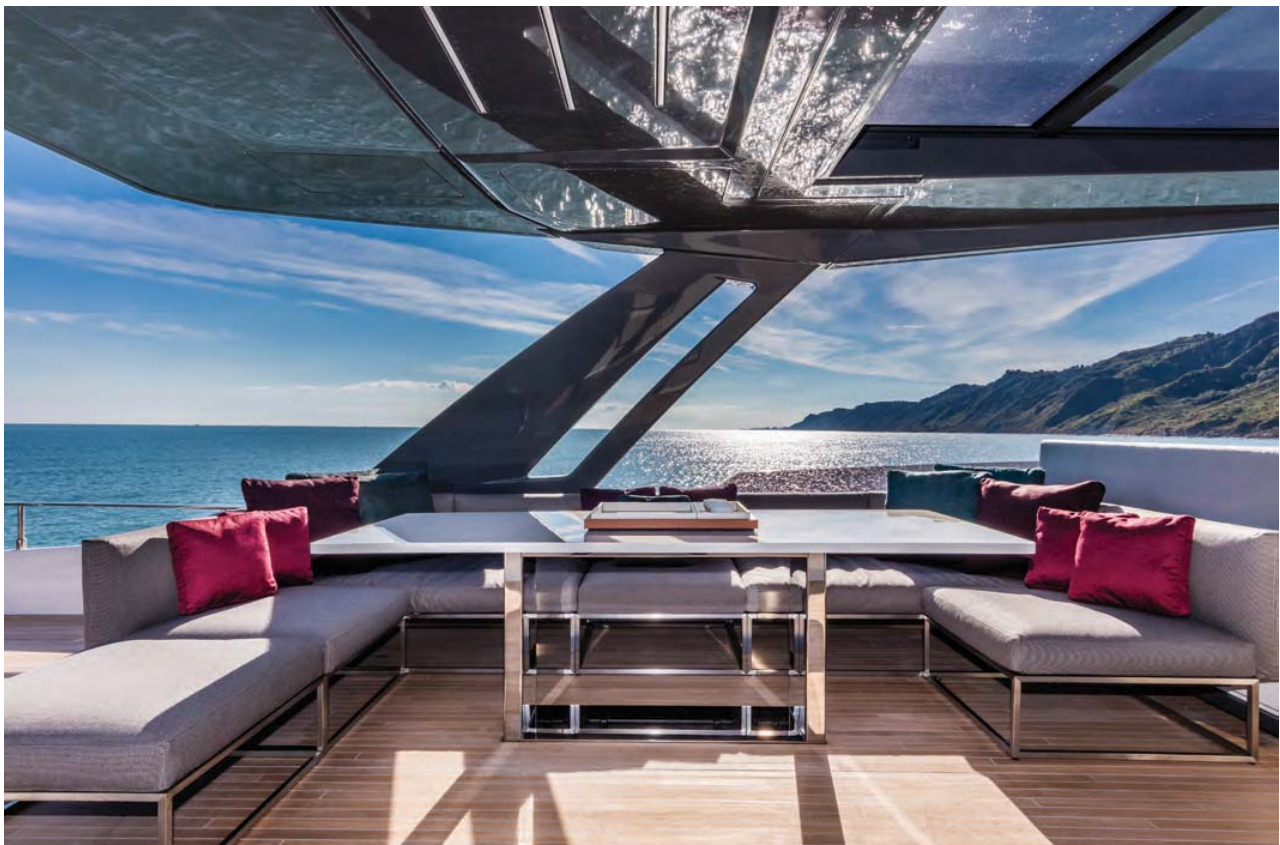
The lacquered surfaces and fine woods and fabrics give a distinctive style to every area: Minotti's flamed oak in a colour reminiscent of tobacco combines perfectly with satin finish brass frames. The warm colours of the woods are matched by several pieces of Minotti designer furniture, enriched by granite-coloured, polished lacquer doors. The coffee and dining tables both reference the colour schemes of the furnishings, with bronze and granite trim. The dining table is completed by eight Thonet chairs in black leather.

Beyond the dining area is an original bookcase with open frames in brushed metal and smoked glass cube compartments, which divides the lounge from the lobby while maintaining visual continuity between the two spaces.

In the first yacht, the main bulwark, visible in the background through the open bookcase, is in chalk white lacquer. The version proposed by the shipyard is lined with a marble grey ceramic material produced by the Italian company Fiorim, creating a distinctive natural stone and marble effect.

Another innovation is the ceiling, consisting of a series of chalk white lacquered, polished and matte, transverse slats. These create a dynamic decorative pattern and add style to the artificial lighting, while at the same time disguising the light fittings, air conditioning vents and audio speakers. The galley is located forward beyond the lobby and the helm station, and is completely separate from the guest area. It is fitted with Ernestomeda furniture and a large cooking top. Beside it, near the stairs leading to the crew cabins, is a convenient dinette. As an alternative layout, the galley can be situated on the port side with a cocktail bar facing the lounge. This solution enhances the convivial atmosphere onboard and enables a lounge area to be set up forward of the helm station.

The futuristic style of the raised pilothouse, accessible from both the starboard passageway and the central lobby, is in stark contrast with the onboard décor. With its dark colour tones, bold geometric lines and striking light effects, it provides the captain the pleasure of piloting a power yacht from a sporty, almost sci-fi, helm station.





Salon, dining and galley all immersed with natural light



FERRETTI 850

Technical Specifications

Engines/ Power	2 x MAN V12 1800 – power 1800 mHP 1324 kW @ 2300 rpm (std)
Displacement Laden	77.49 ton
Maximum speed	29 knots
Cruising speed	26 knots
Length Overall	26.14 M
Max Beam	6.28 M
Fuel Tank Capacity	6750 L
Water Tank Capacity	1320 L

LOWER DECK

Below deck the Ferretti Yachts 850 offers generous spaces for owners and guests.

The airy master suite, also designed in collaboration with Minotti, is in keeping with the style of the main deck, with flamed oak wood, satin finish brass trim and lacquered ceiling. Besides the central king-size bed with leather upholstered headboard and borders matching the bedside tables, it features a study area along the bulwark with a stylish Minotti unit, a large wardrobe and several spacious storage compartments. The TV screen is installed on the wall opposite the bed, covered with Casamance fabric.

Towards the bulwark, a smoked grey glass partition cre-

WHAT OTHERS DON'T HAVE.



Unmistakable style, understated and elegant, immediately recognisable. Half a century of market-changing innovation. Safety, reliability and comfort in its DNA from the start. This is what distinguishes your Ferretti yacht and makes it unique.


FERRETTI
YACHTS

a Ferretti Group brand

450 | 550 | **670 NEW** | 720 PROJECT | 780 | 850 | 920 | 960


FERRETTI
YACHTS
EXCLUSIVE DEALER

SEA PROS YACHTS - exclusive dealer for Lebanon, Kuwait, Saudi Arabia, Bahrain, Jordan
www.seapro.com

FERRETTI-YACHTS.COM

Master Bedroom
& Bathroom



VIP Cabin
& Bathroom



ates visual continuity with the en-suite bathroom, which is fitted with a spacious shower unit, WC and a twin washbasin in Murano glass by Glass Design set on a PaperStone Slate top. Behind the suite, the transverse fuel tank and insulated partition minimise noise from the engine room.

The lower deck houses two spacious VIP double cabins, one amidships on the port side and the other forward. There is a fourth cabin on the starboard side, fitted with twin beds. The décor of all the cabins matches the style of the master suite. Every cabin has en-suite bathroom and separate shower. The crew quarters are located in the extreme bow and include two cabins with bunk beds and private bathroom.

FLYBRIDGE AND EXTERNAL FORWARD AREA

The Vulcan Grey hard top is installed over the sundeck, extending towards the stern and bow, where it is also fitted with a rigid tinted glazing.

The spacious and panoramic flybridge is furnished with freestanding furniture, including a chaise lounge and sectional sofas designed by Gloster. Towards the bow is the spacious helm station, featuring a comfortable sofa with seating for the co-pilot. Also towards the bow but on the starboard side is the cocktail bar with several storage compartments and worktops. There is a second outdoor lounge area on the deckhouse for relaxing in utmost privacy. Featuring a large central sunpad, a dinette with seating for two and a folding table, it offers luxurious solitude on the set.

Upon request, the lounge can be fitted with sunshades and curtains to provide additional protection, privacy and enjoyment of the area, also helped by the fact that the technical mooring equipment is housed separately in the bow.

ENGINES AND PERFORMANCE

The Ferretti Yachts 850 are fitted with MAN engines. Yacht owners will be able to choose twin V12 1800 mhp engines, reaching a cruising speed of 26 knots and a maximum speed of 29 knots. A more powerful version is also available, with twin 1900 mhp MAN V12 engines, to reach a cruising speed of up to 27 knots and a maximum speed of 31 knots (preliminary data).

Seakeepers or Zero Speed hydraulic stabilizing fins can be fitted on request, to customize the yacht to suit the owner's needs, both when cruising and at anchor.



FOR SOMEONE
IT'S A SHAPE.



FOR US IT'S
AN AMAZING SCULPTURE.



Manolo Valdés - *Mariposas*, 2017
Courtesy of Contini Art Gallery

Cruising is an art with Custom Line. An accomplished exponent of timeless Italian excellence from its very inception, Custom Line is on a mission to create exquisite, unmistakable designs that combine cutting-edge technology and ingenious functional solutions, to deliver an extraordinary experience for every owner. Because cruising is the art of going beyond. **The art of being different.**

customline-yacht.com

SEA PROS YACHTS
LEBANON | JORDAN | KUWAIT | SAUDI ARABIA | BAHRAIN
www.seapros.com



CUSTOM LINE

BEYOND THE LINE



CUSTOM LINE NAVETTA 42 M

THE BIGGEST NAVETTA EVER

Custom Line has reached a major landmark in its history with a new model of boundless beauty: the magnificent Custom Line Navetta 42 M, the shipyard's biggest yacht ever.

Following its official premiere at the Cannes Yachting Festival 2018, the new flagship has been one of the stars of the Monaco Yacht Show 2018.

The fruit of a two-year collaborative effort by the Product Strategy Committee headed by Engineer Piero Ferrari, the Group's Engineering Department and Studio Zuccon International Project, the new super-yacht epitomizes a sailing philosophy based on superior design, sophisticated elegance and extraordinary performance. The new flagship, the brand's first above 300 GT, combines the qualities of seaworthiness, comfort, safety and customisation - all part of Custom Line's DNA since the beginning - into a product that is truly revolutionary in terms of style, design and spaces, and whose range places it at the

top of its class. The yacht's colours, finishes and materials, as well as its many free-standing solutions and interior furnishings, were chosen in collaboration with Studio Luca Bombassei, a renowned Italian architecture and design firm, and are yet another testament to the endless possibilities for personalisation offered by Custom Line.

With a length of 41.8 metres (137'2" ft.) and a beam of 8.1 metres (26'7" ft.), Custom Line Navetta 42 features a semi-displacement hull with a bulbous bow that ensures maximum efficiency in any sea condition, reprising the solutions already adopted on its smaller precursors, the Navetta 33 and Navetta 37. Throughout its 4 spacious decks, the new flagship presents a fully-customisable internal layout conceived to exploit the ship's generous volumes to the fullest and to offer maximum liveability in all areas, with impressive



lengths and heights above 2m in the interior spaces. The result is better organisation of on-board flows, total privacy for the owner and his guests, and great freedom of movement for the captain and crew.

Internally, Custom Line Navetta 42 blends exquisite chromatic harmonies with a selection of refined materials and surfaces. Walnut and dark oak are the dominant essences of the interiors, and combine seamlessly with the lacquered surfaces of the ceilings, the bronze-coloured brushed steel of the handles and handrails, and the mirror-finish steel used for the doors.

In perfect chromatic harmony with the dark woods, the main colour tones range from grey to beige, with teal details that recur in the sundeck's unusual chairs, in the upper deck's carpets and cushions, and even in the formal dining table on the main deck.

Aside from the unquestionable elegance, the new Custom Line flagship also impresses for its engineering innovations. Navetta 42, for example, offers unrivalled noise isolation thanks to a special flexible joint in the transmission lines that absorbs vibrations from the axis line. The goal of minimising phonic impact was fully achieved through targeted mathematical analyses for each and every noise source and its location on board. Cutting-edge damping solutions were



also employed, using glued panels that increase comfort by reducing noise and vibrations. Furthermore, just like on Navetta 37, the main deck is fitted with a state-of-the-art floating floor: a technique whereby the floor surface is separated from the fibreglass base by a layer of sound-absorbing materials, to reduce the transmission of noise and vibrations from the engine room to the living areas, while also soften-

ing any footfall.

Finally, as it exceeds 300 GT, the new Custom Line flagship must meet certain regulatory requirements such as those pertaining to stability in the event of a breach. Should the hull become damaged, Custom Line Navetta 42 features a system of automated waterproof doors that close upon specific commands by the captain, in order to isolate the forward compartment from the aft one, thus ensuring safe navigation.

SUNDECK

A supreme expression of seaborne leisure, the sundeck on Custom Line Navetta 42 offers four fully- customisable areas that extend over an 18-metre long space with a total surface of 92 m², covered by a hard-top.

Starting from the stern, there is an open sun pad followed by a covered lounge area featuring beach-style couches and other unique seating elements from the latest collection by Roda – the brand behind all of the exterior's free-standing furniture. The dining area is a pleasantly informal space which includes a bar unit and a built-in table. Beyond the bar unit is the pool area, located forward, with a dumbwaiter that can, on request, reach all the way to the sun deck, as is the case on the first unit.

The black hard top - a nice colour contrast with the hull's white - is mounted on 4 stainless steel poles that add character to the profile while contouring the shapes on an aesthetic



level, while the opaque finishes on the inside enrich the ambiance by highlighting the exclusiveness and sophistication of the interiors.

UPPER DECK

The upper deck greets its guests with a spacious panoramic salon furnished with chairs and sofas from the latest collection by Minotti, which adorns the interior spaces with its inimitably soft and

refined style. Along both bulwarks are two spectacular floor-to-ceiling windows that open, giving access to the side walkways: on the port side is a quaint and private panoramic terrace, while the panoramic area on the starboard side is instead directly connected with the forward area. The living area features a next-generation retractable television hidden in the drop ceiling, whose screen can rotate 180 degrees in order to be viewed also from the outdoor space.

The upper cockpit can be reached from the salon through a glass door that opens completely, creating a single space that seamlessly joins the indoor and outdoor areas. In fact, in addition to sliding electrically, the four glass surfaces also rotate on side hinges to open up the whole area and create a striking spatial continuity. The outdoor area, with light-coloured teak floors that counterbalance the black and grey of the finishes, houses a large 10-person dining table and, all the way aft, a comfortable C-shaped couch. This leisure zone offers a further layer of comfort thanks to its pull-out side awnings on both the port and starboard sides - especially practical in the event of wind or bad weather. On request, an electric canopy can be installed to fully cover the upper cockpit, as was done on the first unit.

Heading forward down the corridor we find a day head on the right, a separate pantry with dumbwaiter on the left and the access point to the crew area, until finally we reach the helm station, which features a captain's cabin and its en-suite bathroom. The integrated bridge, developed together with Teamitalia, is equipped with 5 monitors including 2 touchscreens and an innovative stretched screen display. Other features include a virtual keyboard, to sail in total safety thanks to the fully-integrated instrumentation, and

NAVETTA 42' LAYOUTS

> 41,82 Meter



> Profile



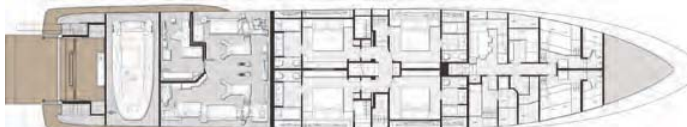
> Sun deck



> Upper deck



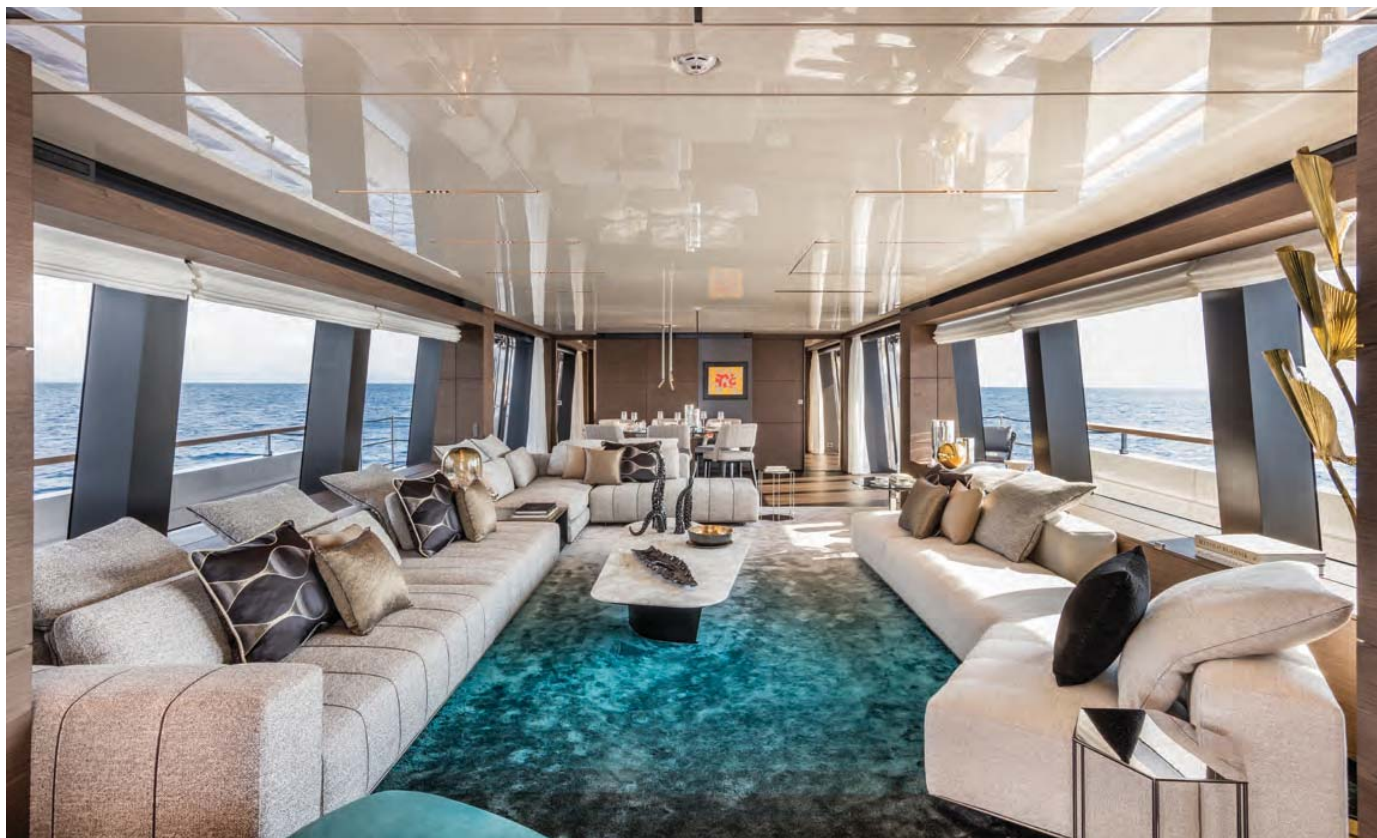
> Main deck



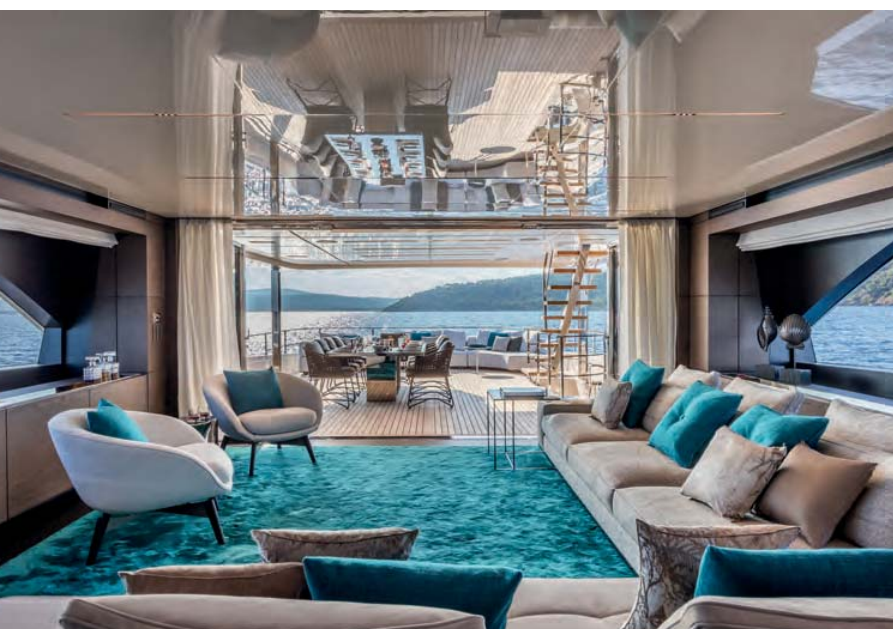
> Lower deck

a FAR radar. Here, with anthracite grey leathers that blend harmoniously with the dominant dark-wood mood, the sleek and simple lines that define the space become synonymous with safety and comfort.

The living area on the foredeck is spacious and thoroughly enjoyable, with a total surface of 50 m2 and a large sun pad, with a 2-section canopy and side curtains to ensure maximum privacy. To allow crew members to move about without interfering with guests, the layout includes a practical crew walkway located in front of the bridge. The standard forward garage was expanded upon request on the first unit, and can stow a tender up to 3 metres long or a jet ski.



Main deck and upper deck living areas



MAIN DECK

The spacious main deck cockpit, fitted with an electric canopy, is completely customisable with free-standing pieces, so the owner may create the kind of environment that best suits his taste. The electric glass door of the salon opens onto an indoor living area approximately 11 metres long,

which includes a comfortable sitting area as well as a formal dining room with a 6-person table. For greater privacy, the ample side windows in the salon are equipped with electric blinds, which can be controlled remotely via iPad.

The main deck's dining area is framed on both sides by two sliding windows that shower the interior with plenty of natural light, highlighting the space's colours and materials: a panoramic balcony comes standard on the starboard side, while the port-side bulwark has a fixed window in the standard layout but can be fitted with another balcony on request. On the first unit, both the upper deck and main deck were equipped with a custom K-Array audio system, featuring innovative loudspeakers with an essential design.

Past the dining area, on the starboard side, is the guest area which also includes a day head. This is also the location of the lift, which on request can go from the lower deck all the way to the sundeck, offering a solution that is extremely competitive on the market - on the first unit, for example, the lift reaches the upper deck.

The port side, entirely dedicated to the crew and separated from the guest area, gives access to the galley, the



bridge (located on the upper deck) and the crew quarters.

Proceeding forward, we reach the exclusive owner's suite, with a surface of 50m², that opens onto a studio space by the entrance followed by a sitting area. The main space features a storage bed that helps optimize the use of space, and a master bathroom in marble with two separate toilet rooms. The "His and Hers" design approach is also evident in the two ample walk-in closets located on the port-side bulwark. To create an even more soothing sense of softness and warmth inside the suite, the flooring on the first unit features a special combination of materials, with a built-in carpet installed onto the parquet hardwood.

An innovation which was introduced for the first time on this yacht is the pull-out balcony inside the owner's suite, developed in collaboration with Fratelli Canalicchio, which can be provided on request. An extremely versatile solution, this balcony consists of two main components: a glass window panel that swings upwards to open and a gunwale that slides outwards to create the balcony's floorboard, which aligns seamlessly with the floor of the owner's suite. Two automatic chandeliers double as handrails and serve as a safety element for this enchanting space suspended above the water.

LOWER DECK

Custom Line Navetta 42 optimally exploits the yacht's generous spaces all the way to the far end of the stern, with a large beach area at water level that provides unforgettable moments of pure enjoyment. This spacious area of nearly 30 m² can be arranged and furnished according to the owner's wishes, in order to maximise its comfort and liveability. From the beach club, on the port-side, we reach the semi-floodable garage with side opening, which can house a Williams 625 transverse tender. The garage is equipped with a slipway launch system and a hatch that opens upwards.

On the lower deck, the 4 guest cabins are arranged in a perfectly symmetrical layout which, however, was varied on the first unit in order to make room for the lift shaft. The two aft cabins, both with a king-size bed, reprise the design concept seen throughout the rest of the ship: glossy, mirror-polished surfaces that add depth to the spaces, and light-coloured carpeting to enhance the sense of comfort and warmth emanating from the dark oak essences. The forward section features another cabin with king-size bed plus one twin cabin - with the option to have an additional Pullman bed installed - that perfectly embodies the family spirit that characterises the entire Custom Line range. All cabins have spacious dressing areas and en-suite bathrooms that feature a similar design to the owner's bathroom, with precious marbles and exquisite chromatic harmonies. Every cabin also offers a cutting-edge Mirror TV - with no visible buttons - that looks like an authentic fixed-image painting, and further enhances the stylish yet essential vibe on board.

ENGINE AND TECHNICAL EQUIPMENT

The first unit of Custom Line Navetta 42 installs 2 CAT C32 ACERT V12 engines capable of generating 1470 mhp. The vessel can thus achieve a transatlantic range of approxi-

NAVETTA 42


Technical Specifications

Engines/ Power	2 x CAT ACERT C32 V12 – power 1623 mhp / 1193 kW at 2300 rpm (std)
Displacement Laden	260 ton
Maximum speed	16 knots
Cruising speed	13 knots
Length Overall	41.80 M
Max Beam	8.10 M
Fuel Tank Capacity	37000 L
Water Tank Capacity	4000 L



mately 3,000 nautical miles at a fuel-efficient cruising speed of 10 knots (preliminary data), up to a maximum speed of 16 knots. 3 other pairs of engines are available: one standard and two extra:

- two CAT C32 ACERT V12 engines with 1623 mhp (standard)
- two MTU 12V 2000 M86 engines with 1725 mhp (extra)
- two MTU 12V 2000 M72 engines with 1469 mhp (extra)

To ensure maximum comfort while anchored, Navetta 42 is equipped with 3 m² fin stabilizers by NAIAD Dynamics. 

PERSHING 62

INTENSE PERFORMANCE AND REFINED AESTHETIC CHOICES FOR A SPORT AND ELEGANT YACHT

An aggressive and streamlined profile, large internal spaces and a highly refined decor are the strengths of this Pershing model, confirming that the brand symbolizes 'Made in Italy' excellence.

The result of the collaboration among the Engineering department and the yacht designer Fulvio De Simoni is this model, a unique fast and elegant coupé yacht. In keeping with the brand's DNA, which has always been careful to make products that combine functionality, security and complete comfort, this boat will allow the Owner to have an excellent time at sea.

The Pershing 56' and Pershing 58', two of the most successful models of the brand, with a total of more than 70 units produced and sold, naturally led to the Pershing 62 which catches the eye immediately due to its sleek and streamlined profile. The hull line and superstructure are designed to give the boat a streamlined profile, with an aggressive and sporty spirit, enhanced by the shape of hull glazing, a typical characteristic of the new Pershing direction, which gives this model a family feeling, and adds extra light to the full beam Owner's suite amidships. The VIP cabin at the bow also benefits from this innovation since it has a double window with a porthole which allows more light to enter this space.

EXTERNAL SPACES

On board, the stern area has some new elements: indeed, a functional launching and storage system for the tender has been installed on Pershing 62, and until now available only on the large models of the brand: a mobile and foldable platform in the central part of the beach, which allows quick and simplified handling of the tender in the garage, using a winch rather than cranes to lower it into water.

The cockpit has a large central sundeck with a large sunbed with a removable back and an L-shaped sofa, both covered by an elegant technical material with a rhombus patterned textile, particularly resistant to water and atmospheric









The helm area: Jet fighter cockpit style



factors. The furnishing also includes an extendable teak table in front of an L-shaped sofa and a mobile bar starboard, in which a sink with a retractable faucet is installed, which can also have a grill and an ice-maker as an optional.

The bow has a large sunbed with cushions. Upon request, a bimini can be installed as a sunshade. The superstructure, carefully made out of fibreglass, contributes to beautify this area. In fact, the central part of the deckhouse is rough and anti-slip to allow the guests to access the sundeck easily, while the sides are smooth and slightly wavy. This is a solution with a double effect that combines aesthetics and functionality: alternating between smooth and rough surfaces which indeed creates a play of light and dark shades enhancing the dynamism of the boat.

The front windshield, which is a magnificent example of quality branded Pershing, is a single piece made of laminate, 3.7 m wide: a characteristic launched by the brand for first time on Pershing 64' and which has now become a standard on most models.

MAIN DECK

The main saloon can be reached from the cockpit through a sliding door, part of large retractable window supplied by Besenzoni. This important feature on most Pershing models combines the cockpit to the saloon, creating a wide open space for the guests. The entire environment exploits natural lighting, thanks to the wide lateral windows with original and rounded geometrical shapes, which contribute to distinguishing the Pershing hulls as well as to guarantee an excellent life on board. Of great interest, within the sa-



Enlightened cockpit



The large retractable window and door system when concealed provide unobstructed view from cockpit to helm station

loon, is the pilot house, which is extremely technological and innovative, anthracite in colour and furnished with a couple of pilot seats, branded Poltrona Frau. The two foldable "Donald" seats, stowed away in one of the lockers under the sofa in the saloon are also Poltrona Frau and they can be used as seats in the cockpit or else at the dining table. This foldable and retractable table can seat up to 6 people. Along the wall at starboard is a long unit in which a 42 litre refrigerator, the audio-video systems and a retractable 32" television screen are installed. Of particular interest is the



PERSHING 62

Technical Specifications

Engines/ Power	2 x MAN V12 – 1550 + Top system TS75S
Displacement Laden	39 ton
Maximum speed	47 knots
Cruising speed	42 knots
Length Overall	18.94 M
Max Beam	4.80 M
Fuel Tank Capacity	3200 L
Water Tank Capacity	740 L



choice of materials characterizing the decor of these spaces: the parquet flooring is made of grey oak. The walls and the furniture are lacquered and polished and quartz grey in colour, with matching doors made of ebony with veins, with a closed pore opaque coating. The dining table is also made of ebony. This matching can be replaced by a second option where the doors are made of grey oak. The colour of the superstructure is opaque white, with panels covered in hand-sewn white leatherette.

LOWER DECK

A central staircase, left to the pilot house, leads to the below deck, which reflects the comfort on board, and to which the same eye for details as on the rest of the spaces was applied, both indoors and outdoors.

The first staircase leads to a midway floor, where the flooring is also in parquet. Along the port-side wall there is the galley, while a guest cabin with a bathroom which is used as a day toilet is found at starboard. The galley on the first floor is installed as an optional, in fact it is closed by a frosted glass wall which can be reached through a sliding door made of the same material. The guest cabin, which has two single beds, can be replaced by a dinette furnished with an L-shaped sofa, and upon request a sofa bed could be installed.

The LED lighting has a fundamental role in making spaces more comfortable and welcoming: the lighting effects that are created, with their homogeneous diffusion in all the spaces, are an added value to the furnishing of spaces below deck as well as the main saloon.

Some steps further down towards the stern is the Owner's area, a full-beam suite illuminated by a double hull glazing which offers a panoramic view at sea level. In the middle of the cabin is a double bed with a headboard and a dark grey band which looks as though it is hanging, and supported by a steel base. On the wall towards the bow there is a 22" LCD TV and an optional 42 litre refrigerator. Below the left glass wall there is a long unit with drop down doors. Along the wall at starboard is a bathroom, which is divided into three areas and which exploits the entire width of the cabin, from which it is separated by a sliding door made of frosted glass. Atten-

PERSHING 62 LAYOUTS

> 18,94 Meter



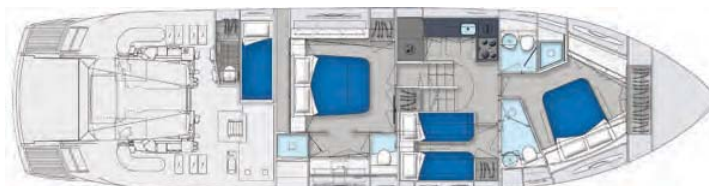
> Profile



> Azimuth



> Main deck



> Lower deck 1



> Lower deck 2



Master bedroom & head

The lower deck can be configured
as 2 or 3 cabin layout




Guest Cabin & head



tion to detail is not lacking here: a top made of corian with an integrated washbasin, a retractable sliding mirror with a waterfall faucet and, upon request, a shower enriched with Sicis mosaic walls, by another prestigious Made in Italy brand. The mosaic can also be installed in the bathroom of the VIP cabin.

The latter, at the far bow, is equipped with a bed inclined at 45° starboard: this solution has made it possible to use spaces more practically, creating a cabin that is almost as spacious as an Owner's one on a boat of the same size. The style, similar to that of the Owner's suite, with a play of contrasts between materials used and chosen tones, gives the environment a contemporary touch.

The new model is available with two engine versions: a double MTU 10V 2000 M84 with a power of 1381 mhp, or two MTUs 10V 2000 M93, with a power of 1524 mhp. With the larger option, the Pershing 62 reaches a top speed of 46.5 knots and a cruising speed of 42. The standard version of the Pershing 62 is equipped with Searex surface propellers, and upon request, it is possible to install an Autotrim system. 

STOP BOATING. START PERSHING.



PERSHING

STAND OUT

PERSHING 5X 62 70 74 82 **9X** 108 140

PERSHING-YACHT.COM

A FERRETTI GROUP BRAND

PERSHING
EXCLUSIVE DEALER

SEA PROS YACHTS - www.seapro.com
LEBANON | JORDAN | KUWAIT | SAUDI ARABIA | BAHRAIN

LATONA'S ENDLESS BEAUTY

Wide open-air spaces, timeless elegance, 50 metres of style and functionality - CRN's new superyacht offers an original interpretation of the art of bespoke shipbuilding

CRN's mastery of shipbuilding reaches its utmost expression in the new 50-metre superyacht Latona, which was presented as a world première at the Monaco Yacht Show 2018 at the end of September. Delivered in May 2018, the Italian Atelier's latest masterpiece has been custom-built to meet the wishes of a highly selective and determined Owner. Drawing inspiration from the 'Supercorero' of the 1960s, the Latona marks the success of a new joint project between CRN and Zuccon International Project. Indeed, this new yacht's technical solutions and the slender lines of the hull have been developed by CRN's Engineering







Balconies annexing to the owner's suite and salon

style mood, a stylish fil rouge that unravels through all guest areas. The streamlined bow and the spacious interior and exterior volumes, in turn, also include some breathtaking areas almost 'hanging' over the sea, let the Latona shine in all her endless beauty.

Onboard the Latona, guests will find numerous outdoor areas – from the wide Mediterranean-style sundeck to the lounge area at the bow, the outdoor living areas and the al fresco dining area located aft to the magnificent terraces overlooking the sea, all the way to the exclusive tender bay obtained on the lower deck. The latter forms a large open-air lounge integrated with the beach club, featuring a solarium, a fitness area, a hammam and a sea-water indoor pool perfect for children to have fun and also ideal to store the tender in the yacht's 'belly' during navigation.

The Latona can comfortably host up to 10 guests in five cabins characterised by extremely refined details: the master cabin, two VIP cabins and two double cabins, plus accommodation for 9 crew members, including the Captain.

SUNDECK

The sundeck, in typical Mediterranean style, is made up of three ideally-separate but physically-uninterrupted areas that unite to become one single open space: the dining area, the forward sunbathing area fitted with a Jacuzzi, and the aft solarium, furnished with four sunbeds and an imposing sunbathing area that develops vertically, remains isolated from the rest of the deck and therefore ideal for total relaxation.

Onboard comfort is ensured by latest-generation home automation solutions, allowing control of the audio-video system, the lights, as well as the decorative and black-out curtains using the I-Pads installed in all areas and rooms or directly from one's own device after downloading the dedicated app.

Thanks to two Caterpillar C32 1081kW @ 2300 rpm engines, the yacht can reach a maximum speed of 16 knots and a cruising speed of 14 knots.

UPPER DECK

Reaching the upper deck, guests are welcomed into a large salon devoted to music. Liberty style pervades this area too, as shown by the special custom-made sofa shaped as a lyre, a musical instrument typical of the 1920s, and by the decoration of the white carpet lying at its feet. Another eye-catcher in this room is the elegant, white-lacquered grand piano.

Outdoor, guests can find the al fresco dining area, featuring a fully-customized teak table in Liberty style, a bar, and a lovely open-air tea room, the real jewel on this deck.

Department, while the craft's exterior lines were pencilled by design firm Zuccon International Project, who, together with the Shipyard's Interiors & Design Department also took care of both interiors and exteriors.

With her 50 metres in length, four decks and an under-deck, the Latona stands out for her classical, timeliness profile that further enhances the style and elegance of outdoor areas. The yacht's interiors are pervaded by a refined Liberty-



CRN 50M

Technical Specifications

Engines/ Power	2 x CAT C32 1081 kW @ 2300 rpm
Gross Tonnage	498 GT
Maximum speed	16 knots
Cruising speed	14 knots
Length Overall	50 M
Max Beam	9.20 M
Fuel Tank Capacity	50000 L
Water Tank Capacity	14000 L







From the foredeck to the beach area, plenty of leisure spaces



Two large sun pads complete this area, while the inflatable climbing wall will undoubtedly offer unforgettable and exciting adventures. The upper deck lobby is embellished by Central European-style details and is covered by a skylight that lets in plenty of light directly from the sundeck. Walking further towards the bow, the Captain's cabin and office can be reached, followed by the navigation bridge, built in the same dark brown shade as Latona's recurrent embroidery motif.

The living area and the solarium located in the forward part of the yacht are very large and comfortable. This area also features the concealed garage for the rescue boat - located under a huge sun pad with cushions, a roll-out awning - and two jet skis.

MAIN DECK

The cockpit on the main deck features large, comfortable living areas in the light blue and turquoise colour shades found in all outdoor decorations and a wide swimming pool with a mosaic that delightfully combines turquoise shades and golden details while also letting plenty of natural light shine through to illuminate the tender bay located below it.

The main deck salon includes a large dining room furnished with a stylish round table in walnut wood with silver decorations and chairs embellished by a floral pattern that will add an exclusive touch to equally exclusive gala dinners.

As specifically requested by the Owner, the galley has been located behind the dining area, and a convenient hatch



Float in garage



tender bay



has been cut out in the wood panelling, making service even more efficient while being discreet and easily concealed when not needed.

Amidship, along the corridor, the 1920s Parisian atmosphere embraces and enchants guests, thanks to the Liberty decorations on the doors and the uninterrupted wood panels decorated with floral patterns that separate the main salon from the lobby and the Owner's apartment. In particular, the spiral staircase in front of the lift, which connects the three guest decks internally, is fitted with a central backlit column in wood lined with silver leaf.

Slightly further, towards the bow, is the exclusive full-beam Owner's apartment, characterised by a very original layout. The cabin opens up to a living room furnished with a neutral-shade rounded sofa, a very exclusive and private area for the Owner couple. A distinctive element in this area is the fumoir, a private balcony that can also be enjoyed while cruising.

The master stateroom impresses for the countless hand-made details, such as the bed headboard in dark walnut

MADE BY *you* WITH OUR OWN HANDS.



74 m - Cloud 9

If simply owning isn't enough, if you think that a unique design can be called yours only if you are the creator, then you are the type of yacht owner that CRN is talking to. We can turn **your** talent and **your** vision into a unique object that's completely **yours**. Conceived by **you** with the expertise of our hands. **Your** Shipbuilder. crn-yacht.com

from 40 m



to 100 m



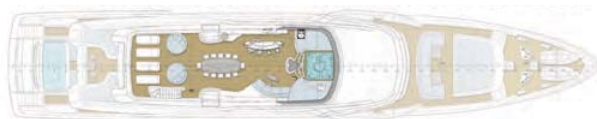
Yacht your way

CRN 50M LAYOUTS

> 50 Meter



> Profile



> Sun Deck



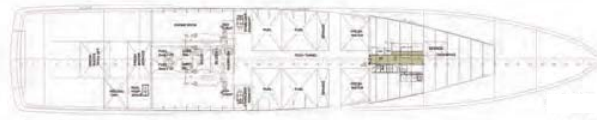
> Upper Deck



> Main Deck



> Lower Deck



> Sub Deck



wood and light-blue velvet, the soft and sinuous lines of the furniture, the white wool and silk carpeting decorated with the dark brown embroidery that runs across the entire yacht, and the elegant appliques in blown glass. The ceiling too is a true masterpiece of the skilful craftsmen that worked on it, with wooden five-petal flowers forming a crown around the spotlights. On the right-hand side of the suite is a spacious, exclusive private terrace offering a magnificent view of the sea.

Inside the suite, two entrances allow to gain access to the bathroom for him and for her, entirely in magnificent bright Carrara marble. Here, the Emperor Dark shade makes the two mirroring washbasins and the sinuous dark brown embroidery decorating the floor stand out against the golden Calacatta marble. The large circular hydromassage tub and the walkthrough shower are located in the central part of the bathroom.



LOWER DECK

The Latona is a peaceful, luxurious haven, the peak of CRN's innovative solutions being reached in the lower deck aft area, which has been turned into a large, exclusive open-air living area integrated with the beach club – over 70 square meters allowing space to enjoy moments of pure celebration both indoor and outdoor, to relax in the Turkish bath deco-




Owner Suite



VIP Cabin

rated with a custom mosaic, work out in the fitness area, lie down in the solarium, but also store all the water toys available for the whole family. Children can also have fun in the sea-water indoor pool - also featuring a precious blue and turquoise mosaic - that becomes a garage for the tender when the yacht is cruising.

The lower deck also hosts the four guest cabins. Two double VIP cabins can be found aft, decorated with fabric-lined panels, lacquered panels, mirrors adding even more depth to the cabins, and carpeting with a refined, sinuous pattern reminiscent of sea waves. Two twin cabins are located at the bow. One is for the younger children and is furnished with a bunk bed (plus a concealed one for the nanny), while the second has two sliding beds that can be converted into a double, as well as an additional pullman bed. All cabins are en-suite, with bathrooms sharing the same style as the Owner's, from the fine marbles to the large showers with a seat. 



ITAMA 75' A MYTH EVOLUTION

The largest craft in the Itama fleet enhances the open yacht panorama with a high-class combination of class, technology and liveability

Designed by architect Marco Casali in cooperation with Ferretti Group Engineering Department, this boat, which is more than 23 metres long, is perfect for the ship owner who wants to experience the sea without filters.

CARBON INNOVATION

If we begin by focusing on technology and materials, this craft is fitted with a very special carbon fibre and glass windshield and "avantop". The new, autoclave-moulded carbon and glass windshield is no less than 10.70 metres long at the sides and 4.50 metres wide. The entire windshield is therefore almost 26 metres long, a highly innovative feature in

terms of both its unique golf club-shaped window section and its spacious front opening that slides away with a pantograph movement to join the cockpit to the sundeck in the bows via an original central walkway. This innovation makes accessing the whole below decks area both safer and more convenient. The use of carbon fibre also saves 60% of the weight of a steel windshield of this size. A breakthrough adopted to improve performance in terms of both speed and fuel consumption; two features that are fundamental for a craft with such a sporting character.

The "avantop" also boasts a revolutionary new sliding structure that allows it to cover, in just a few seconds, the whole front of the cockpit when sailing. This area is highly innovative too, and features a helm console with a vertical



design suspended on a central upright, which separates the cockpit's living area from the second, more intimate, dinette to the fore of the console. The helm station is protected by the fixed structure of the "avantop" that stretches over it like an umbrella, covering 14.35 square metres. Thanks to an electric drive system, the front shell of the top can slide forward as far as the windshield to cover an incredible 19 square metres.

A brilliant combination of design, weight distribution and engineering enables the "avantop" to be both stylish and highly efficient, and the central uprights have been deliberately designed to improve visibility. Great care has also been taken over the style of the retractable bimini top that covers the dinette. This opens by stowing away the fabric in a special carbon housing that closes automatically. Both the windshield and the "avantop" are part of the incredible design project that has succeeded in restyling the typically 70s' corners and contours of these parts of the boat.

A TRULY LUXURIOUS COCKPIT

The cockpit stands out for both its size and features. Measuring almost 60 square metres, the area is divided into 4 zones that include a second dinette decorated with the same fabric as the large horseshoe-shaped sofa in the centre of the cockpit. The white fibreglass helm console conceal

ITAMA 75'

Technical Specifications

Engines/ Power	2 X MTU 12V 2000 M96 1826 HP + Surface drive props
Displacement Laden	52.20 ton
Maximum speed	42.5 knots
Cruising speed	38 knots
Length Overall	23.54 M
Max Beam	5.92 M
Fuel Tank Capacity	5500 L
Water Tank Capacity	1000 L

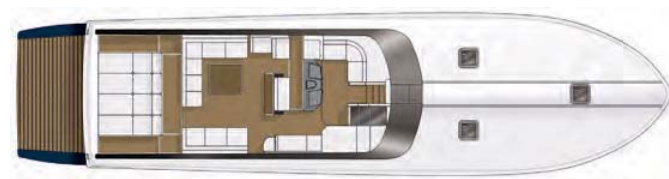
seating that is also part of this second dinette. The aim of the design here has been to make these areas as private and as comfortable as possible by using original solutions such as LED and optic fibre lighting. LED floor lighting has been used on all the walkways on the craft. The spacious, almost full beam, stern sundeck with double side walkways is located over the hangar that comfortably houses the craft's tender or jet ski as well as a small crane to launch them with. It also features two comfortable sofas upholstered in a special waterproof fabric that can slide together to form a

ITAMA 75' LAYOUTS

> 23,54 Meter



> Profile



> Main deck



> Lower deck 1



> Lower deck 2

large horseshoe shape that can sit up to 12 people around a polished teak table. In general, all the furnishings have glass fibre frameworks with teak tops and doors.

A large chaise-longue has also been included under the windshield in front of the helm console, so that passengers can relax and enjoy cruising in complete luxury. On the left of the central console there is also an ergonomic seat for the co-pilot.

AN EXTREMELY VERSATILE LAYOUT

The craft's standard layout includes 3 cabins (a Master Cabin, a full beam VIP cabin and a guest cabin with side-by-side twin beds) and 3 bathrooms, as well as a twin crew cabin with its own bathroom. In this initial layout the dinette is remarkably spacious and owners can even choose to include a bar and a 40-inch TV, two ideal features for enhancing still further the craft's propensity for socializing.

The craft is also available in a 4 cabin layout, all with en-suite bathrooms.



Surface drives completed with
MTU 1823 HP achieve
outstanding performances





Elegant bright
laquered finish and
natural teak furniture



*Master Bedroom
and Bathroom*

SUPERIOR STYLE BELOW DECKS

The Master bathroom is divided into two separate areas, the shower and the toilet. Immediately on the left there is an elegant, white, acrylic stone washbasin with twin taps. The furnishings are made of teak, whereas teak with white corian inserts has been chosen for the floors. The large shower cubicle has a glass door and is decorated with mosaic tiling based on ship owner. Continuing onto the VIP cabin, a number of highly practical and ultramodern features can be noted immediately; like the reading lights incorporated in the bed head and the fact that the bed rests on a raised teak platform with two leather benches on either side of it. Under this there is a large and convenient, natural teak chest of drawers plus two more storage spaces. The walls are decorated with the same elegantly bright lacquered finish as the Master Cabin. The two guest cabins, situated on either side of the craft towards the bows in the optional 4-cabin layout, have been deliberately designed to match each other in terms of both colour and materials with carpets on the floor and natural teak furniture. The first guest cabin has side-by-side twin beds, whereas the second is fitted with bunk beds. A similar solution has been adopted in the crew cabin, but in this case a Pullman bed has been fitted, which means the top bed can be stowed away.

THE TASTEFULLY DESIGNED DINETTE AND STOREROOM

The dinette area offers endless possibilities and immense comfort. A warm carpet precedes a large horseshoe-shaped leather sofa that wraps around a square teak table with white lacquered edges and a special opening mechanism. The sofa can comfortably sit up to 8 people, and opposite it stands a matching natural teak cabinet housing a built-in LED screen television. In front of the dinette, but separated from it by a satin finish glass door, is the galley. Completely furnished in lacquered gloss white, the galley, can be reached



directly from the dinette and the crew cabin as well as having its own separate stairway leading outside. The area is equipped with a series of special features including a ceramic glass hob with an oven and dishwasher located underneath it, whereas under the sink there is a slide-out breakfast table complete with a couple of specially foldaway leather chairs.

The galley also includes a separate, stainless steel, twin door fridge column, and the corridor leading down from the Master staircase includes a practical storage space with a stowaway washing machine.

The Itama 75' is therefore a craft that can offer even the most demanding open yacht lover an experience that is profoundly luxurious, innovative, and embellished with all the glamour and value of a genuine classic. With its twin 1823 hp MTU engines combined with ZF Sea Rex 140, the Itama 75' can reach peak speeds of up to 42.5 knots or cruise comfortably at 37 knots.



REGAL LS4 & LS6

THE NEW BOWRIDERS AND CUDDY LINE

Regal newly introduced LS series is bound to make waves within the smaller boat manufacturing industry.



REGAL LS4



REGAL LS4

Technical Specifications

Length	7.4 m
Beam	2.5 m
Dry Weight	2063 kg
Deadrise	22°
Fuel Capacity	212 L



The series include for three new models the LS4, LS4C and LS6.

The new bowriders provide ample seating (12 adults capacity comfortable seating), flexible and versatile layout with multi position lounges and rumble seats at transom and forward, or aft facing helm seat and social seat, with an expansive and very comfortable bow area.

All models include for a multitude of key features such as:

- Power Assisted Steering
- Fusion Marine Sound – 6 Cockpit Speakers
- Gas Assisted Rams on Storage Compartments



REGAL LS6



- Cooler with Designated Storage
- Premium Crafted Upholstery
- Blue LED Back-Lit Dash
- Hand-Wrapped Steering Wheel
- FasTrac Hull Design
- In-Mold Gelcoat Bootstripe
- Stainless Steel Windshield Header
- Fold-Away Navigation Lights
- Bow Anchor Locker
- An extra-large head with drift wood cabinetry (for the LS6 only)

As well as several optional accessories such as power tower and power platform.



REGAL LS6

Technical Specifications

Length	8 m
Beam	2.5 m
Dry Weight	2417 kg
Deadrise	22°
Fuel Capacity	276 L





TECHNOHULL OMEGA 45

OFFSHORE PERFORMANCE AND HIGH-QUALITY FINISHING

The Greek shipyard unveils the new flagship Omega 45



13.8 meters in length, the Greek shipyard's flagship stands out for high-level offshore performance combined with exceptional comfort and onboard safety. Omega 45 is a clear example of the all-new TECHNOHULL® DynaStream patented hull. Cutting-edge technology has been used in every stage of the creation of Omega 45. The new Omega 45 can be equipped with either inboard or outboard engines delivering top speeds that may exceed 85 mph.

Omega 45 combines the concepts of versatility, performance, high quality details and finishes all in a single model.

TECHNOHULL OMEGA 45

Technical Specifications

LOA	13.80 m
Width	3.50 m
Displ.	5.200 kg
Fuel	1100 l
Water	120 l
Engine Opt	inboard/outboard
Max Engines	4x400 hp outboard



PERFORMANCE AND HIGH EFFICIENCY

The values above have been part of the Greek shipyard's DNA since it was established in 2005. They are facts that ensured the production of models so versatile and safe that they can be used either for comfortable and elegant long-range cruises or as luxury tenders for super-yachts, thanks to the RIB's smart and customizable design and lay-out. Performance and high efficiency make any TECHNOHULL® the ideal RIB for people who want to take the weekend off and not worry about the distance to cover, mainly because these boats can take on the most difficult weather and sea conditions in complete safety and comfort, even with a large crew. Cutting-edge technology has been used in every stage of the creation of Omega 45. Characteristics such as CNC prototyping, ceramic-coated moulds, foam cored layers, mean this boat makes strength one of its strong points.

DYNASTREAM, THE NEW PATENTED HULL TECHNOLOGY

Omega 45 is a clear example of the all-new TECHNOHULL® DynaStream patented hull technology, fully implemented by the shipyard. By evaluating the working envelope of each model and the demands of the range, the Greek shipyard has derived separate hull design constraints. Using state-of-the-art computer programmes and hull structure algorithms, key hull design aspects have been confirmed. After several design loops, the hydrodynamic profile is streamlined. As a result, strake geometry, step number, step positioning and the variable dead-rise distribution along the hull's surface have been optimised.

The combination of the above has resulted in a boat that is perfectly balanced, efficient and extremely seaworthy, perfect for fast commuting, yet with a very smooth and safe ride, providing a high thrill factor both for the expert and newcomer.

COMFORT ON BOARD

The hinge-point of the TECHNOHULL® Omega 45 design is the modern centre console, sheltered by a T-top that protects the four wrap-around shockproof seats. The cockpit features a state-of-the-art electronic console supported by touchscreen smart central control. The design of the Omega 45 console allowed the shipyard's team to create spacious interiors that include an enclosed bathroom - an aesthetic choice that will satisfy the most performance-oriented owners and their partners as well.

The forward area of the deck includes a spacious storage space, hidden under an extra-large sunbathing area, and a comfortable seat forward of the console.

The cockpit's layout is dedicated to convivial activities, with a C-shaped sofa that runs the entire width of the boat along the transom, served by a central table. Aft of the ergonomic seats, the owner can choose to have another sofa or a mobile kitchen.

INBOARD OR OUTBOARD ENGINES? FOR YOU TO CHOOSE

Several propulsion options are available: owners can choose triple engines, with 300hp, 350hp or 400hp options. Lastly, the shipyard offers a "radical option", i.e. the possibility of mounting 4x400hp engines that can deliver a top speed in excess of 85 miles per hour (factory testing parameters) and a cruising speed of 55 mph!

The shipyard also offers options to owners who prefer an inboard diesel engine propulsion system, including stern drives or high power engines, coupled with surface drive systems. These characteristics make Omega 45 ideal for covering long distances without sacrificing comfort or pleasure.



LIVE ITAMA.



itama

POWER IS OPEN

A FERRETTI GROUP BRAND

itama.45S

itama.62

itama.75

SEA PROS YACHTS

EXCLUSIVE DEALER FOR

LEBANON | SAUDI ARABIA | JORDAN | KUWAIT | BAHRAIN

WWW.SEAPROS.COM

WWW.ITAMA-YACHT.COM



REGISTERING A YACHT OR A BOAT

THE CHOICE IS YOURS...

Congratulations on your recent purchase, now where do you register it?



Deciding and finalizing a boat purchase is not easy, moreover when it is your first one. Registering this same boat may also be a dilemma more especially with the large number of offshore and local registries to choose from. Registration of your boat in the most adequate registry is a matter that should be well thought of and will depend on where: permanent berth, most common areas of cruising, and how: private use or charter, you will be using this same boat, as well as different

financial and practical parameters to be considered such as the importance of applicable fees and taxes, ease of travel to different countries, naval protection and flag recognition, after all purchasing a boat is more of an international “mobile” investment when compared to a house or a car purchase.

Smaller motor boats (up to 35 or 40') are usually bound to be registered at local maritime registries (within their cruising area) for fiscal and practical reasons, however when it comes to the larger yachts the choice is endless but it is almost a certainty that these yachts are registered in off-



shore maritime registries whenever the owner's residential and citizenship status allows so.

Offshore registries are numerous, and selecting one may become a very confusing matter, more especially with all the different parameters to be considered. We will list the most commonly used ones, their advantages, main requirements and constraints.

> **Red Ensign registries:** Divided into 2 categories,

Category 1: registering ships of unlimited tonnage and type and including the registries of: Bermuda, British Virgin Islands, Cayman Islands, Gibraltar, Isle of Man, and the UK registries.

Category 2: registering commercial ships and yachts up to 150GT (can be extended to 400GT), and non-commercial operation vessels up to 400GT, and including the registries of Anguilla, Falkland Islands, Guernsey, Jersey, Montserrat, St Helena, and Turks and Caicos.

The Red ensign registries provide one of the highest safety standards acceptable for travel in EU waters, with each flag state having the responsibility of enforcing regulations over vessels registered under their flag. Some of these registries also provide very attractive tax structures (0% company tax for the BVI, Cayman Islands, Isle of Man and Bermuda), being also tax neutral as outside the scope of the EU VAT laws. Vessels registered under a Red Ensign maritime registry benefit from an 18 months entry permit in EU waters (renewable after a proven exit and stay in a non EU country), and can also cruise US waters only reporting to US customs upon transfer to different state jurisdictions. While the registration process is a rather lengthy one, and the list of requirements is considerable, as compared to other registries, such registries because of their flag state stability and credibility will provide owners with peace of mind and security as to their investment.

> **Panama:** The largest ship registry in the world. Providing the possibility of dual registration (provided the other registering country's consent is obtained) and a flat registration fee regardless of the ship's size and tonnage. Vessels registered under this flag also enjoy no registration taxes, and no tax on profit provided it is generated by international trade. This maritime registry is mainly for commercial ship registration.


> **Marshall Islands:** One of the largest maritime registries in the world with several regional offices in major maritime cities across the world providing service and support for commercial and private use vessels registration. The vessel's registered ownership must be to a citizen or corporation. Boats can be registered 24 hours after having submitted all required documents and cleared all requirements. This maritime registry is low tax and respected worldwide.

> **Malta:** The largest maritime in Europe and one of the largest in the world. Very popular for private yacht registration with EU compliance and relatively low registration costs.



Registration for EU nationals can be directly in their name, while for non-EU citizens the incorporation of a Maltese company or a foreign approved company is necessary. This flag also provides for income tax exemption for commercial yachts operating out of Malta.

> **The Netherlands:** Maritime registry with flexible rules and regulations and minimal requirements. Copy of an ID and proof of boat ownership being the only documents required. EU citizens can register their boats under their name while non-EU citizens must register the boat under a UK company which shall act as registered boat owner. Besides its flexibility for paperwork, this registry also has very low registration costs.

> **Cyprus:** maritime registry offering many tax benefits, and one of the lowest registration and management costs in Europe plus all the benefits of an EU flag. A vessel can be registered there if owned by a company with more than 50% of its shares belonging to a Cypriot or if the registered owning company is registered under the Cyprus flag. 

PORSCHE SUV WITH E-PERFORMANCE AND NEW COMFORT OPTIONS

New Cayenne now available as a plug-in hybrid

Beirut. Porsche is expanding its range of hybrid models with the introduction of the new Cayenne E-Hybrid, which combines the best driving dynamics in its class with maximum efficiency. A three-litre V6 engine (340 hp/250 kW) combines with an electric engine (136 hp/100 kW) to generate system power of 462 hp (340 kW).

The maximum torque of 700 Nm is already available just above idling speed; with a boost strategy adopted from the 918 Spyder supercar. The model accelerates from zero to 100 kilometres per

hour in 5.0 seconds and has a maximum speed of 253 kilometres per hour. The new Cayenne E-Hybrid can drive up to a distance of 44 kilometres and a speed of 135 kilometres per hour on electricity alone. The average consumption in the New European Drive Cycle (NEDC), depending on the set of tyres used, is 3.4 – 3.2 l/100 km of fuel and 20.9 – 20.6 kWh/100 km of electricity. Alongside the launch of the Cayenne E-Hybrid, Porsche is expanding its range of comfort and assistance systems for the entire Cayenne series with additional options such as the new head-up display, massage seats and 22-inch light metal wheels.



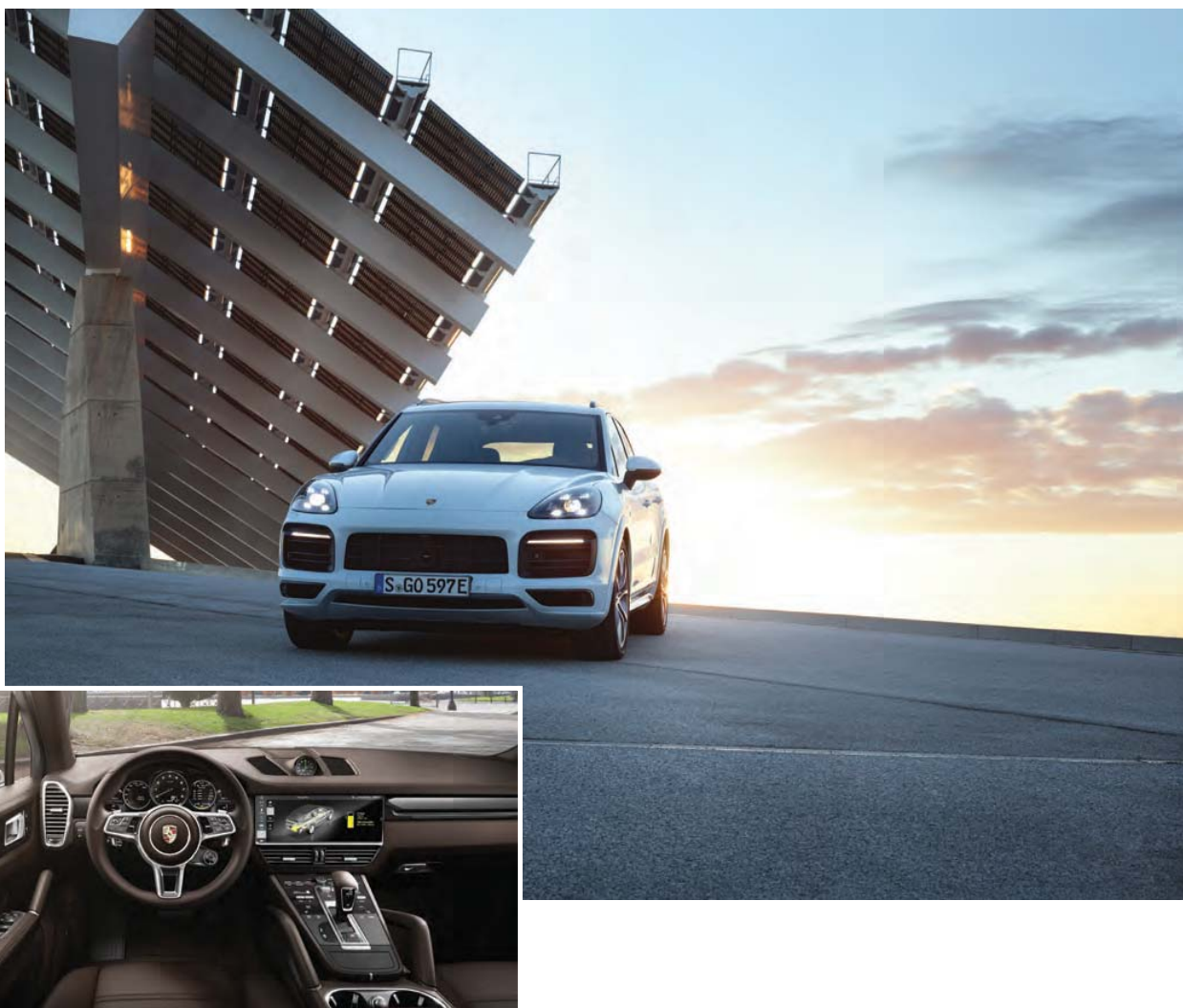


462 HORSEPOWER SYSTEM POWER WITH 918 SPYDER BOOST CONCEPT

The next stage in Porsche's journey towards e-mobility is the Cayenne E-Hybrid. While the performance of the combustion engine moderately improves on its predecessor by 7 hp (5 kW) to 340 hp (250 kW), the performance of the electric engine is now over 43 per cent higher at 136 hp (100 kW), therefore generating a combined 462 hp (340 kW) output. The boost strategy derived from the 918 Spyder supercar is a new addition. It ensures that the electric engine can be used in all the standard Sport Chrono Package driving modes for an additional performance boost. This means the maximum system torque becomes available as soon as you press the accelerator pedal. Depending on the driving situation and performance requirements, drivers can continue to draw on the boost torque across the entire range of speeds. This leads to a more agile and superior driving experience. The extent of the boost support and battery charging during the journey

depend on the driving mode. In the performance-focused Sport and Sport Plus modes, virtually all of the battery's energy can be used for a boost. In Sport mode, the battery is charged just as much as is required for a new boost. In Sport Plus mode, the battery is recharged as quickly as possible. The other modes support maximum driving efficiency. Battery capacity has improved significantly in the Cayenne E-Hybrid, along with the distance on electricity and the boost reserves: in comparison to the previous model, capacity increased from 10.8 to 14.1 kWh – an increase of up to 30 per cent. The fluid-cooled battery, stored beneath the loading floor in the rear of the car, consists of eight cell modules with 13 prismatic lithium ion cells each. Within 7.8 hours, the high-voltage battery is charged fully via a 230-volt connection with ten amps. If the optional 7.2-kilowatt on-board charger and a 230-volt connection with 32 amps are used as an alternative to the standard 3.6-kilowatt charger, the battery is 'filled up' again after only 2.3 hours.





NEW HYBRID MODULE AND RAPID SWITCHING TIPTRONIC S

Porsche has redesigned the Cayenne E-Hybrid's drive train. The hybrid module consists of a highly-integrated combination of electric engine and separating clutch. In contrast to the previous electro-hydraulic system with the spindle actuator, the separating clutch is operated electromechanically, which ensures even faster reaction times. The transmission acquires the new Tiptronic S, newly developed for the entire Cayenne range with eight speeds. The automatic gearbox not only offers even more comfortable and smoother starting but also significantly speeds up switching. Interruption of tractive force during switching processes has also been reduced further.

ACTIVE HANG-ON ALL-WHEEL DRIVE AND 3.5 TON TRAILER LOAD

With Porsche Traction Management (PTM), the Cayenne E-Hybrid has an active hang-on all-wheel drive with an electronically regulated, map-controlled multiplate clutch. With

its broad range of torque distribution, the system offers clear benefits in terms of driving dynamics, agility, traction control and off-road capabilities. Thanks to the brand new chassis, Cayenne E-Hybrid offers the same sports car driving dynamics as all models of the new Cayenne generation. Porsche Active Suspension Management (PASM) is available as standard. Optional features include the electric Porsche Dynamic Chassis Control (PDCC) roll stabilisation system and a trailer connection for loads of up to 3.5 tonnes.

NEW OPTIONS: HEAD-UP DISPLAY AND 22-INCH LIGHT METAL WHEELS

With the launch of the Cayenne E-Hybrid, Porsche is expanding its range of assistance systems and optional features for the entire series with a variety of innovations. For the first time, head-up display is available in a Porsche. It projects all the relevant driving information directly into the driver's line of vision. Other new features now available in the Cayenne include massage seats, a heated windscreen and 22-inch light metal wheels.



Converting electricity into adrenaline.

Discover the new Cayenne E-Hybrid.



Drive the new Cayenne E-Hybrid with exclusive benefits :

- | 4-year Porsche Worldwide Warranty
- | 2-year Porsche Service Package

Terms and conditions apply.

Porsche Centre Lebanon s.a.l.
Telephone 01 573 911
porschebeirut.com

Fuel consumption (combined) 3.2 l/100 km – electricity consumption (combined) 20.6 kWh/100 km – CO₂ emissions: 72 g/km



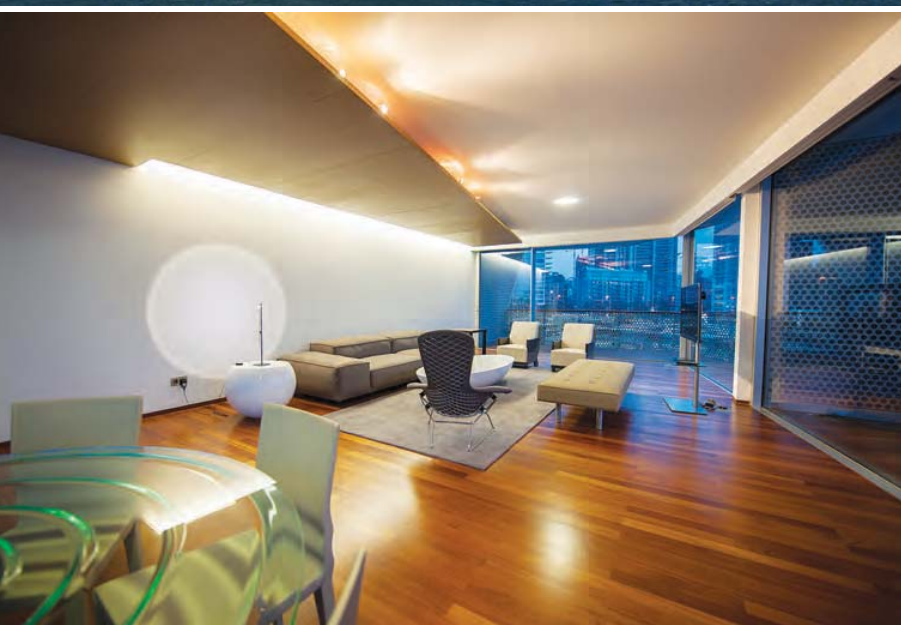
PORSCHE

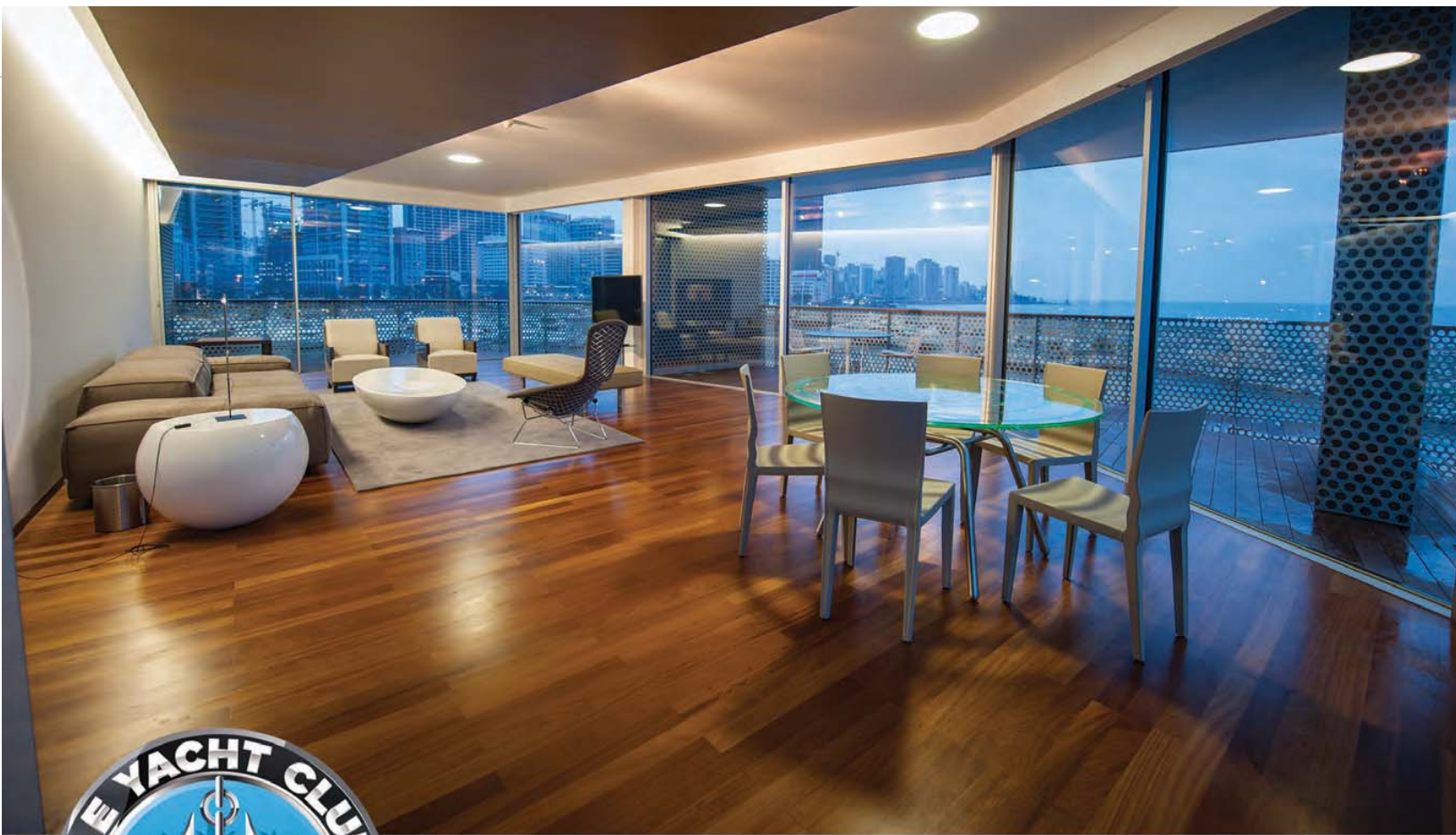
DISCOVER A HOME AWAY FROM HOME AT LE YACHT CLUB - BEIRUT



Le Yacht Club - Beirut is the premier seaside destination for luxury living and recreation in Lebanon, catering exclusively to the region's cultural and social elite. Located in the heart of the city, Le Yacht Club - Beirut boasts several facilities including a private pool, a restaurant, a bar lounge, a games room, a wellness center and a library along with numerous suites and residences.

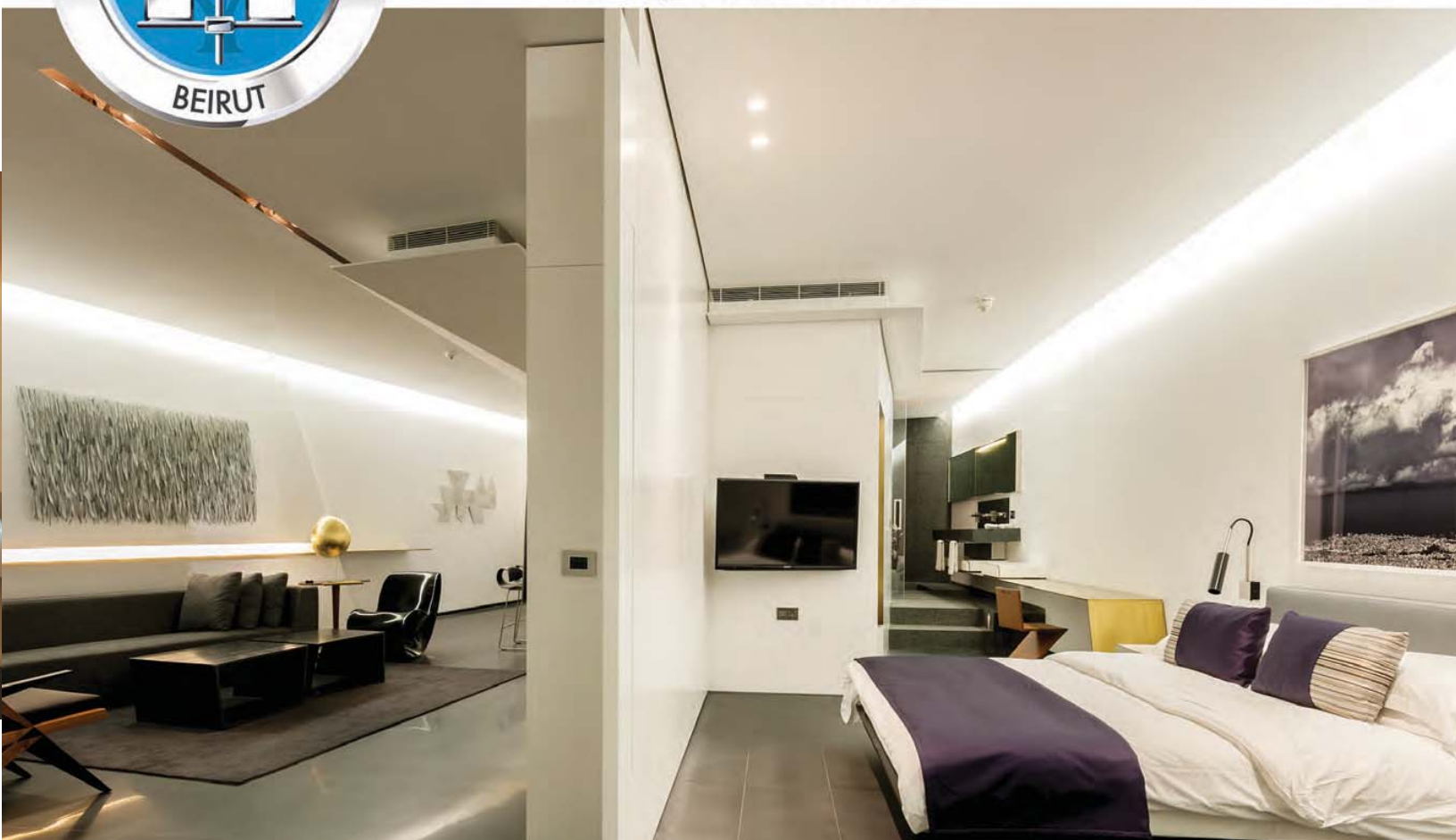
A unique gem on the shores of the Mediterranean, Le Yacht Club - Beirut is your first port of call when touring luxury. Much more than a leisurely destination, it is a mythical experience and a wonderland reality. It is where lavish journeys begin and unforgettable moments come to life. From the spa's serenity to the suites' opulence, La Dolce Vita is awaiting you... Welcome Abroad!





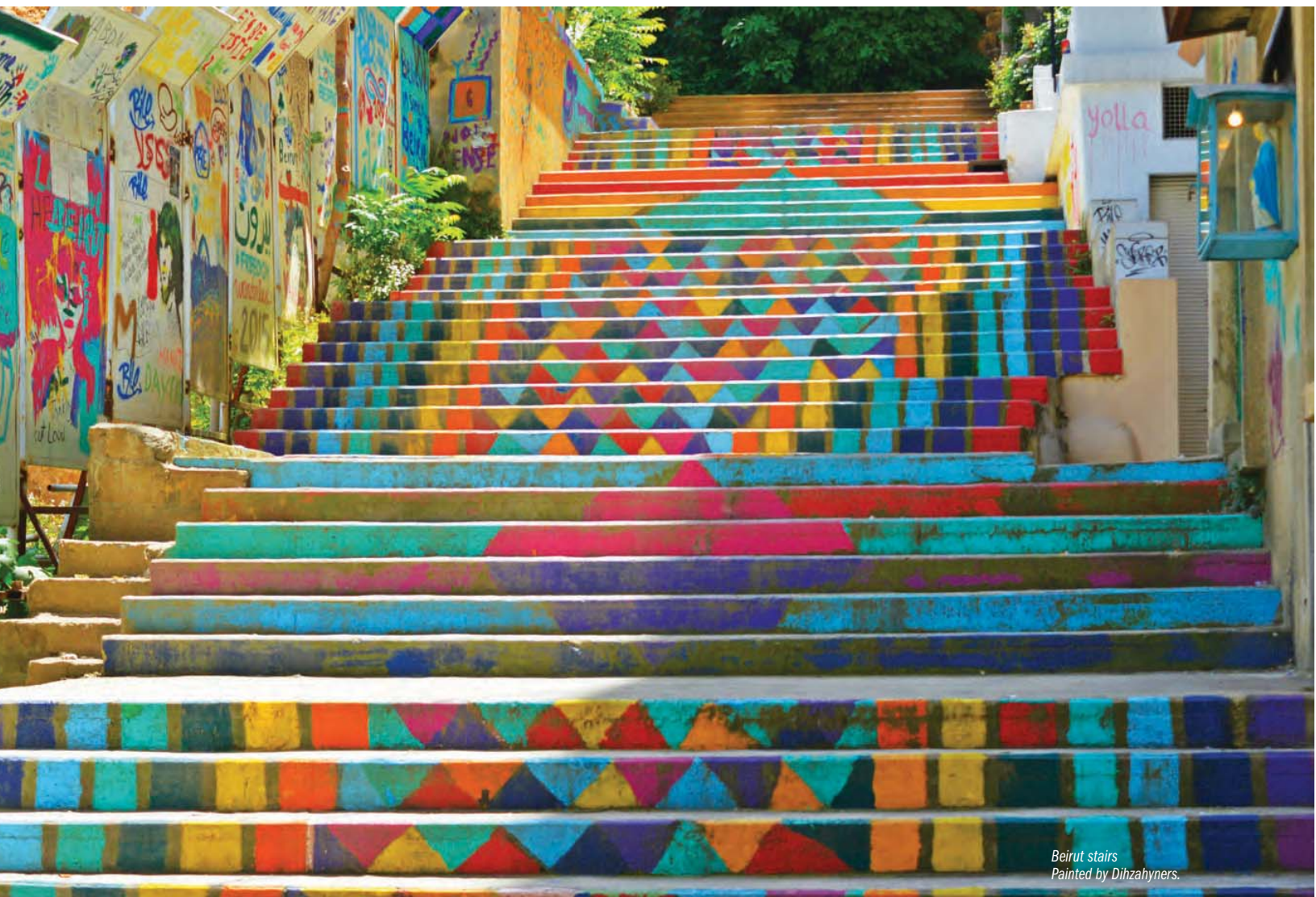
Le Yacht Club - Beirut

www.leyachtclubbeirut.com



STREET ART

“URBAN INTERVENTION”



Beirut stairs
Painted by Dihzahyners.

A tradition once considered the purview of criminals is now a major part of a worldwide beautification project of cities. Painters have left their marks on walls across the globe, spreading political, social and sometimes inscrutable messages to the masses.



Street art artists such as “Banksy” (an anonymous England-based street artist, vandal, political activist, and film director) whose works of political and social commentary have been featured on streets, walls, and bridges of cities throughout the world. His satirical street art and subversive epigrams combine dark humor with graffiti executed in a distinctive stenciling technique.



The artist Carlos Trilleras in Bogota uses street art as a medium of protest, and demonstrates the power of graffiti and its ability to create dialogue and challenges the status quo.



The husband and wife the “Clandestinos” (Elisa Monreal and Bruno Smoky also called Shalak Attack) work on art projects around the world on themes related to socio-cultural values, introducing their Latin American heritage, as well as environmental issues.

The Spanish artist Spok Brillor’s work is recognized by its fantastic background and its language with touches of humor that has made him stand out from the rest. With his fascinating hyper-realistic technique and large formats, he manages to establish a dialogue with the viewer.





Triston Eaton, graffiti artist, street art muralist, illustrator and toy designer. His goal is to bring art to those who are not always fortunate enough to have access.



French Cambodian Jadore Tong (SYRUS) graffiti artist uses the walls in Berlin as canvas for his paintings. Sometimes he realizes his ideas in a bold minimalistic way and sometimes in a more impressionistic and dreamy way, depending on his mood.



INTI takes his name from the Incan "sun god", as homage to his Chilean roots. His colossal murals pulse with the bright colors of a Latin carnival and the mysterious energy of ancient South American culture. The murals often contain themes of life, death, ancient religion and Christianity, all drawn together with one or more strange characters (Incas, Chilean tribesmen...).INTY proudly flaunts South America's rich cultural history in the face of globalized capitalism, whilst still addressing Chile's problems of poverty and their rocky recent history.



Artist David Choe explores themes of desire, degradation and exaltation. His figure paintings are characterized by a raw, frenetic tone that he has termed "dirty style". His graffiti and murals are spread all around Los Angeles, and can be found as far away as Japan, England and France.



Retna (Marquis Lewis) has created an impressive collection of murals characterized by exotic lettering that brings to mind hieroglyphics, Arabic calligraphy and other types of classical scripts.



Eduardo Kobra creates unique 3-D chalk pictures and paintings that, when viewed from the correct angle seem to emerge from the sidewalk. His mastery of different styles makes him one of the most famous street art artist. His realistic murals can be seen on buildings and walls all over the Brazilian city of Sao Paulo, as well as in L.A.



David Walker creates color-explosive portraits using only spray paint in the form of street art. Most of his portraits are unknown female characters layered with color, motion and emotion.



Did you know that Vienna is one of the most interesting cities to discover street art in Europe? Its scene is buzzing and renowned artists from all over the world come there to leave their artwork visible to everyone, such as: "the dreams guardian" by the Mexican artist Cix. He considers that education is the key to future and freedom, and above all means hope. His painting is actually three graffiti in one, one of them is designed with fluorescent paint, glowing in the dark, the other can be seen through 3D glasses. His painting represents the God of energy, who protects the children who are seeking education, he dives with them in the world of dreams made possible by education. He is inspired by the history of the Aztecs and the Mexican culture.



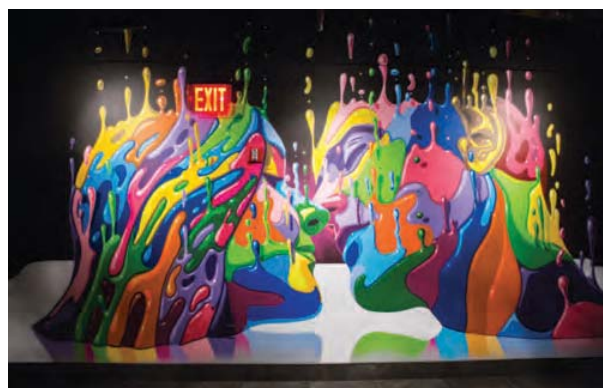
French street Julien Mallard (known as Seth), nicknamed the "globe painter" for having painted in many places in the world. He has been globe-trotting across the world experiencing the "university of life", learning from street artists from different cultures. His large-scale murals most frequently depict simple childlike characters bursting with colors. Inspired by the work of cartoonist Hugo Pratt, Seth is also inspired by the mangas.



Okuda San Miguel has a unique iconographic language of multi-colored geometric structures and patterns. He blends geometry with organic shapes, bodies without identity, headless animals and symbols. His work often raise questions about existentialism, the universe, the infinite, the meaning of life, and the contradictions of false freedom of capitalism.



Kenor is a Barcelona artist who uses simple shapes and strong colors to create traditional urban art. He is fascinated with typography and logos, which he uses to "decorate the dead cities". He uses abandoned, damaged and worn parts of the town that desperately needs reanimation and resuscitation. He is a sort of spokesperson against the "greyification" of Barcelona.



Dasic Fernandez a Chilean born artist, creates photorealistic scenes from everyday life moments of happiness, curiosity, surprise and hope.



"One of the most exciting things in street art is the opportunity to use the environment" famous quotation by Mr Thoms when talking about his art, as he uses nature to create his paintings, among which the above called "Trimmed Bush".



MTO's "Le Grand Jeu" (in collaboration with IEMZA). He never just paints a wall, he gives space a meaning.



Old building in France refurbished through street art by Seigneurie.



When street art painting is used for an anti-drink and driving campaign, by Mr Dheo.

URBANIZATION OF BEIRUT'S BUILDINGS

The real graffiti scene in Lebanon was first felt during the 2006 summer war against Israel, where activists wrote anti-war slogans with cheerful colors. A few years later several Lebanese street artists made their appearance in Lebanon, among them Phat2, EPS, Fish, Kabrit, Zed, Prime, Ibrahim and Rile, whose main goal with other Lebanese artists is getting Beirut on the map as the legitimate graffiti capital. Murals in Beirut highlights several meanings, among which education, innovation and tolerance between communities.



The Cuban street artist of Lebanese origins Jorge Rodriguez Gerada, painted a mural on a building situated in Beirut on the former front line during the Lebanese war. Its title is "Connection" sending a message on the importance of education.



Executed by the Lebanese Street artist Chadi Akka "Chad the Mad" who enjoys live street painting.



3D STREET ART

Ever since the graffiti boom, street art started evolving with various forms and subsets such as 3D Street Art. Often known as 3d chalk art, it is a 2-dimensional artwork drawn on the street itself that gives you a 3-dimensional optical illusion from a certain perspective. Apart from chalk, some artists use acrylic, latex, gouache, trash...Etc. 3D street art is gaining much popularity these days. Notable brands are already taking advantage of the public's curiosity on 3D street paintings to create awareness for their products.



Arndt Nikolaj, a Russian artist and professor, has been painting amazing 3D sidewalks all over the world.



Mario Wrinkler, specialized in fine arts and photorealism, also uses spray painting for his optical illusions.



Chrome Rabbit by Bikissimo in Dubai. A Puerto Rican muralist who developed a unique technique over several years in his imagery.



Bordalo II Portuguese creator of the "Trash Animals", creates, recreates and assembles "end of life" materials, creating awareness on ecology.



EFIX French street artist, who likes to play with perspectives and depth of fields. His main characters are inspired from cartoons.

STAIRS

Some truly breathtaking stairs; they will definitely leave you wishing you could walk up masterpieces like that all the time.



Valparaíso stairs (Chile) by Mario Coledon.



Valparaíso stairs (Chile) by unknown artist.



Seoul, South Korea



San Francisco tiled stairs, needed 300 persons to complete it.



Major stairs connecting the two neighborhoods of Mar Mikhael and Jeitawi refurbished by the NGO "Paint Up" by Dihzahyners.



Tripoli, Lebanon.

The number of street artists is considerable and growing worldwide, all with the same shared common grounds: sending specific messages through amazing true art creations, artwork that is completely free of any materialistic considerations, to all classes of the urban population.



A full-page background image showing a vibrant Aurora Borealis (Northern Lights) display. The sky is filled with streaks of green and yellow light. Below the sky, a range of dark, rugged mountains is visible. In the foreground, a calm body of water reflects the colors of the aurora and the mountains. A small, dark island or peninsula is visible in the water.

IN THE SPOT

“AURORA BOREALIS”

DAWN, MORNING LIGHT

An Aurora is a natural electrical phenomenon characterized by the appearance of streamers of reddish or greenish light in the sky, especially near the northern or southern magnetic pole (mainly in high altitude).



The effect is caused by the interaction of charged particles from the sun, with atoms in the upper atmosphere.

Auroras, sometimes referred to as Polar lights, Northern or Southern lights, are natural lights in the sky produced when the magnetosphere is disturbed by the solar wind which precipitates charged particles (electrons and protons) into the upper atmosphere. The resulting ionization and excitation of atmospheric constituents emits light of varying color and complexity.

The form of the aurora, is dependent on the amount of acceleration imparted to the precipitating particles.

Most auroras occur in a band known as the "Auroral zone", at all local times, most clearly seen at night. Magnetic Midnight.

There are several types of Auroras due to the interaction of the solar wind with the earth's magnetosphere.

Aurora Borealis, seen in northern latitudes, was named by Galileo in 1619, inspired from the Roman goddess of the dawn and the Greek name for the north wind. It can be seen in Iceland, Denmark, Alaska, Sweden, Norway, Finland, Canada, Russia, sometimes in northern England and Scotland.

Aurora Australis, seen in the southern latitudes, in Australia, Chile, Argentina and New Zealand. It has the same features as the Aurora Borealis.

Auroras are occasionally seen in latitudes below the "Auroral Zone" (region centered around the magnetic pole),

when a geomagnetic storm temporarily enlarges the "Auroral Oval" (a huge ring).

Other types of auroras have been observed from space such as:

- Poleward arcs.
- Theta aurora.
- Dayside arcs.
- Black aurora.

Carl Stormer and his colleagues used cameras to triangulate more than 12000 auroras, they discovered that most of the light is produced between 9 and 150 km above the ground.

Auroras have several Visual Forms, they frequently appear either as:

- Diffused glow.
- Quiet arcs.
- Active aurora, evolve and change constantly.
- Curtains (like auroral arcs) are the most distinctive the brightest, and the most frequent. They can fill the whole sky.

Auroras appear under a wide variety of colors:

- **Red:** appears at the highest altitudes. Excited atomic oxygen emits red low concentration of atoms, and the lower sensitivity of eyes at the wave length make this color visible only under more intense solar activity. The low concentration of oxygen is responsible for the faint appearance of the top



Aurora Borealis, Iceland



Some moments simply insists that you just stand and breathe. *(Bronnie Ware)*



Northern lights, polar bear

parts of the curtains. Scarlet, crimson and carmine are the most often-seen hues of red auroras.

■ **Green:** seen at lower altitudes. The more frequent collisions suppress the red mode and emits the green color, which dominates. Fairly high concentration of atomic oxygen and higher eye sensitivity in green make green aurora the most common.

The rapid decrease of concentration of atomic oxygen below 100km is responsible for the graduality of flaring and fading.

■ **Blue:** seen at lower altitudes. Atomic oxygen is uncommon and molecular nitrogen and ionized molecular nitrogen takes over in producing visible light emission; radiating in both red and blue parts of the spectrum. Blue and purple emissions show up at the highest level of solar activity.

■ **Ultraviolet**

■ **Infrared**

■ **Yellow and pink,** are a mix of red and green or blue, other shades of red as well as orange may be seen on rare occasions.

The best time to see the lights depends on the season and the regions.

■ The northern lights are always present, nevertheless winter is usually the best time to see them. September, October, March and April are the best months to view the aurora borealis, due to lower levels of light pollution and the clear crisp air.

■ The southern lights are always present, but the best time to see them is from March to September.



N



DESIGNED FOR
Dreamers

NEW COLLECTION.

THE ITALIAN-MADE FURNITURE THAT YOU HAVE ALWAYS DREAMED OF,
FOR THE LIVING, DINING AND BEDROOM AREAS, IS NOW AVAILABLE.
DISCOVER OUR FREE INTERIOR DESIGN SERVICE IN-STORE.

VISIT US IN DOWNTOWN BEIRUT
CHAFIC WAZZAN AVENUE, TEL. 01 986987 / [NATUZZI.COM](https://www.natuzzi.com)

NATUZZI
ITALIA

IN THE SPOT



AIR RACING

EXHILARATING EMOTIONS

It is hard to keep them under control.





Budapest race



Red Bull Barnstorming race

“There is no sport equal to that which aviators enjoy while being carried through the air on great white wings.” Wilbur Wright.

Air racing aims at developing a race that challenges the ability of the world's best pilots, it is not only about speed but also precision and skills.

There are 10 types of Air Racing, the most famous ones are:

1- AERO GP

Divided in 3 different disciplines.

Air Race 1: Pure motorsport at its fastest (500km/h). It is a thrilling test of pilot skill in a class known as Formula One Racing. Eight airplanes race directly against each other on a 1.5km race circuit, just 10 meters above the ground. The first aircraft to cross the finish line after 8 laps wins.

Air Combat: A real air-to-air “dogfight”. Pilots take the skies in an attempt to outmaneuver, hunt down and shoot (blanks) at each other out of the sky, in the style of military air combat.

Barnstorming: A 3rd element which can consist of any of the following (depending on the venue): aerobatics; stunt flying; or precision target dropping (where pilots drop bombs from their aircraft at low altitude, aiming at various targets).

“To most people, the sky is the limit. To those who love aviation, the sky is home.” Anonymous



Parabatix

Sky racing against the clock



Cannes race



2- RED BULL AIR RACE

An international series of air races in which competitors have to navigate a challenging obstacle course in the fastest time. Pilots fly individually against the clock and have to complete tight turns through a slalom course consisting of pylons, known as "Air Gates". The races are held mainly over water near cities, airfields, or natural wonders. They are accompanied by supporting program of show flights.

3- AIR RACE CLASSIC:

Started in 1929. An annual transcontinental air race for female pilots. Route lengths are approximately 3,900 km and the pilots are given 4 days to accomplish them. All flights are conducted during day light.

4- PARABATIX SKY RACERS

The world's best freestyle paramotor pilots sky racing round a ground skimming aerial race course. Swooping round pylons with incredible daring accuracy while facing within milliseconds against the clock. This is the ultimate sky race.

5- FORMULA V AIR RACING

A competitive motorsport that involves custom-built aircraft using engines up to 100 cubic inches in displacement. Racers compete around a 5 km oval course marked with pylons, that subjects the racers to up to 2.2 G as they reach lap speeds of over 270km/hr.



Luxury at Hand



Private Jet Charter - VIP Aircraft Handling

With its professional staff, modern equipment, spacious lounges and the **new state-of-the-art Legacy 500 aircraft**, Cedar Executive brings in a new level of luxury to the corporate aviation sector.





HEALING SONGS OF DOLPHINS

SOMETHING MAGICAL IN THE WATERS

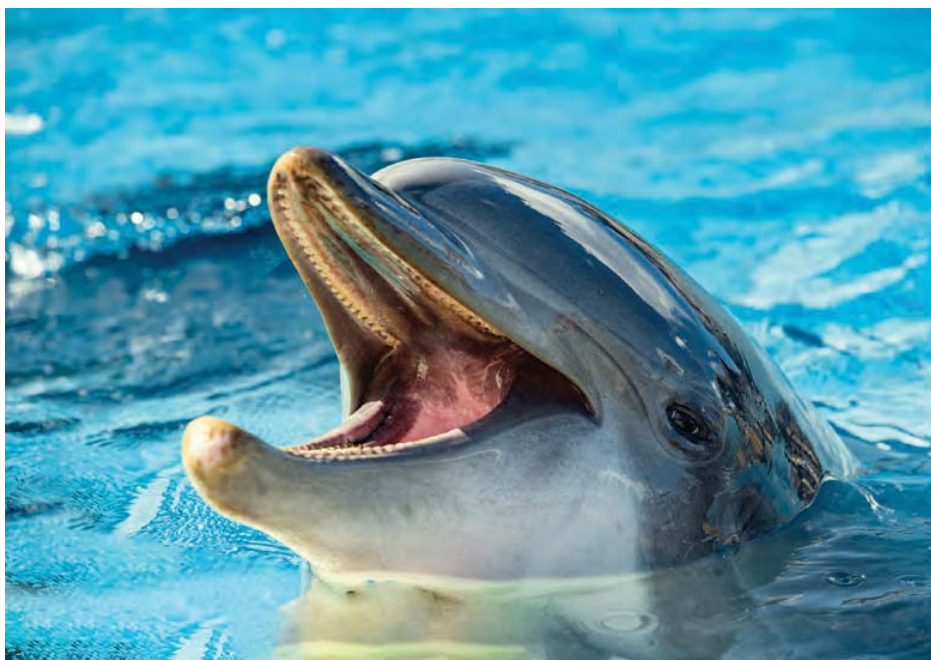
Almost everything that happens in nature can be associated with the world of sound.

It is proven that music affects people, plants and animals. A baby's brain is particularly sensitive to the surrounding sounds.

Aquatic therapists have long understood that being in the water with dolphins has a therapeutic effect on people with varying types of disabilities. It also alleviates depression, enhances recovery and reduces pain.

What do these sounds mean and where do they come from? A new study, published in the St Petersburg Polytechnical University Journal has suggested that dolphins are capable

of "highly developed spoken language". They believe dolphins use clicks, whistles and pulses to form "words" which they string together into sentences in much the same way that humans do. They also found that each dolphin would listen to a sentence of up to five of these "words" without interruption, before replying. "Essentially, this exchange resembles a conversation between two people," the lead researcher, Dr Vyacheslav Ryabov, wrote in the study. "Each pulse that is produced by dolphins is different from another by its appearance in the time domain and by the frequency.



With their curious nature and trademark “smile” (formed by delicately curved jaws) dolphins have become the symbol of the friendly playmate of the sea.

In this regard, we can assume that each pulse represents a phoneme or a word of the dolphin's spoken language. “This language is considered as highly developed spoken language, akin to the human language.”

Scientists believe that dolphins' ultrasound emissions have considerable healing potential from an energy and informational perspective. Clinically, ultrasound has been used to promote healing. Physiologically, we now know that these sounds can influence heart rate, breathing, muscle contractions, memory, and immune functions. In terms of energy, the dolphin's ultrasound blast is 4 times stronger than therapeutically used in hospitals. An interesting observation made by Dr. Steve Jozsef and David Cole of the Aquathought Foundation, states that the sounds produced by dolphins have a beneficial effect on the functioning of the immune, endocrine, cardiovascular system, and is particularly beneficial on children with neurological disorders, especially on autism and Down syndrome.

Healing sounds of dolphin therapy contribute to getting rid of psycho- emotional and somatic disorders in children and

adults, it is also used in treatment of depressive and post-stress conditions. Listening to the sounds of dolphins is recommended for pregnant women and children.

Many believe that the sonar of dolphins can trigger the healing process by increasing T-cells and endorphins.

Dolphins produce sounds from the vibrations of an air sac in their respiratory cavities. When the air enters through the blow hole, the nasal air sacs swell and some structures of the nasal passages, called phonic lips, open and close continuously generating sound waves. Dolphins emit two types of vocal sounds: Continuous Tone such as whistles, squeaks and squeals (dolphins can modify the tone of the sound); and Burst-Pulse Sounds, which are a superposition of sound waves produced successively at regular intervals. There are also the Clicks, used for echolocation.

Studies showed that dolphins have their own language. They have a lexicon of danger and food, seeking sounds. Sometimes they put these sounds together in a reasonably sophisticated fashion. There is evidence that they may greet

Dolphins has intelligence that almost equals ours, emotions and healing capacities almost alien compared to what we are capable of.
(Dr. Michael Zosloff)



one another by name because they utter unique sounds when meeting other dolphins. Each dolphin communicate through the emission and reception of sounds; they develop distinctive sounds since the first years of their life. All individuals produce a unique sound, which is different from the others so they can fully identify each other. Unlike any other animal, dolphins exhibit a tendency to take turns when vocalizing, making their communication sound as a conversation.

Different emissions, different contexts. Dolphins are almost constantly making one of two kinds of sounds: Communicative or Navigational. They can make sounds to interact socially, when they separate from their peers, when they are excited, when alarmed or just when they feel happy. The sound depends on the situation. Lost dolphins have been observed to produce whistles frantically in an attempt to call their companions. They produce a blast that invites other individuals to play, or can produce very high pulsating sounds during an aggressive encounter. Mothers often whistle their offspring for

several days after birth. Each pod of dolphins is different; they have different languages and different cultures.

The best way to encounter dolphins and listen to their sounds, while respecting them, is by swimming with them or sailing in their natural environment (such as in the Bahamas, The Galapagos Islands, Portugal, Egypt, Australia, South Africa...Etc). Avoid dolphinariums where these animals are enslaved by food and suffer endlessly from the perils of captivity, and where their life span is far shorter than in the wild. Made specifically for sick children in hospitals and cancer treatment centers, there are amazing videos on dolphins whistling while swimming in the wild, paired with perfect relaxing yet uplifting music, offering viewers and listeners an incredible immersive therapeutic experience (Wanderlust album by Tenya). These beautiful dolphin sounds have inspired a lot of musicians who created deep meditating symphonies for harmony and inner peace. Dolphins have been known to save countless human lives, whether it be from shark attack or rough seas, and that alone demands ultimate respect.

SP

BEIRUT - MADRID - BEIRUT

A wing away!

With convenient connections



3 flights / week
Monday - Thursday - Saturday

Beirut - Madrid



09:20



13:25

Madrid - Beirut



14:45



20:10

 **MEA**
Middle East Airlines - Air Liban | www.mea.com.lb





Portabello sliders by Mathew Kenny



Tomato tarte by Alain Passard



Tarte en fleur de pommes
by Alain Passard



The Vurger by Chloé Coscarelli



Vegan burger by Laura Wright

VEGAN CHEFS

GASTRONOMY IS AN ART

There's no question that "cruelty free", plant-based food is the future, and these vegan chefs are proof.

"Whenever you will go to a restaurant, you will witness the singularity of a chef's work, just like a good play or an opera". Alain Passard.

Being Vegan does not necessarily mean you will have to sacrifice exquisite dishes made by world renowned chefs.

The two Michelin star Chef Alain Passard has become an icon of creativity with vegetables. He considers that colors, shapes, odors, and taste must be rigorously selected so that artistry can emerge from the quality of the product. Thanks to him, vegetables now take center stage across the globe, not only for his accent on them, but also for his promise to nurture them with paramount respect. He patented the "Bouquet de Roses" apple tart, a dish that honors the flower and the fruit. Angela Liddon creates fun and delicious recipes that everyone including kids will enjoy. She received an award for her blog which features over 500 healthy, animal free recipes.

Chef Timothy Pakron, a passionate cook, photographer, recipe developer, and food stylist. He has a unique point of view and fills his feed with his passion for plant-based food and gardening. His "Garden Pesto Pasta" is just one example of his earthy aesthetic dishes.

Chef Matthew Kenny is certainly a celebrity in the culinary world. His biography reads "crafting the future of the food", where he describes his optimism for the future of plant-based market, as well as his desire to have a role in this change. His feed on Instagram of intricately crafted tarts, soups, and toasts are considered as works of art.

Chef and photographer Maya Sozer's vegan creations are a huge hit, both on paper and on social media. She develops creative simple and flavorful plant-based dinners and des-



By Timothy Pakron



Coquilles St.-Jacques by Alain Passard



Garden pesto pasta by Timothy Pakron



Coconut rose cheese cake by Jo Ross



Vegan cake by Lamington Raw

erts. She merges her background in visual arts with her love for healthy food. You'll find in her books a stunning array of dishes ranging from Caramel Tarts to Basil Lasagna.

Chef and author Chloe Coscarelli is completely dedicated to food, she was the first vegan to win a culinary competition on television. She has been at the forefront of the vegan revolution, she created the first "Vegan Burger". Chloe believes that vegan can still mean mouthwatering foods. Her dishes are playful, colorful, and supremely tasty. Best of all, she has made them as fast and as easy as possible because that is exactly how she likes to cook.

Laura Wright likes to share wholesome meals with the people in her life as well as inspire well-being and celebrate the plant-based lifestyle. Her cookbook features sumptuous recipes such as her "Vanilla Corn Cake".

Raw Lamington famous for his amazing raw vegan cakes. They are like works of edible art and these raw lamingtons look so delicious!

The chef Maria Amore, formerly earning a living as a corporate lawyer, turned vegan chef, now feels she is making a difference in the world through her true love: vegan cooking. Passionate about animals, nature, books, holistic health and cooking.

Jo Ross discovered the plant-based lifestyle in the last year while trying to lose weight, and a whole new world of food and wonderful flavors. She describes her healthy eating journey in her blog, where you can also find amazing pictures of her creations along with their recipes, such as her "coconut Rose Vegan Cheese Cake".



Quinoa salad by Angela Liddon

VILLEGIATURE AWARDS 2018

LE GRAY, BEIRUT PUTS LEBANON IN THE LIMELIGHT



A general photo of the award winners



Ambassador Rami Adwane and Mr. Georges Ojeil after receiving the trophy

It was in the presence of HE Mr. Rami Adwane, Lebanon's Ambassador to France that Lebanon and its tourism sector were in the limelight in October during a ceremony held by Villegiature Awards in the historical Château de Ferrières to distinguish the winners of this prestigious award among which was Le Gray, Beirut that was nominated among the five finalist to receive the Award of the Best Hotel in the Middle East against Palazzo Versace, Dubai; One & Only the Palm, Dubai; W Amman, Jordan and Jumeirah Royal Saray, Bahrain and has won the Villegiature Award for the Best Swimming Pool in the Middle East against Burj el Arab, Dubai; One & Only the Palm, Dubai and W Amman, Jordan.

This is the first time Lebanon is represented in the Villegiature Awards, an occasion that highlighted Lebanon tourism on the international level among the biggest players in

the sector in Africa, Asia, Europe and the Middle East.

Invited to make a speech on this occasion, HE Mr. Adwane said: "I am not the one winning the prize today, I am here to represent the country whose managers are winning a lot of prizes all over the world. We are really proud, proud of you, of your hospitality, proud of the nice swimming pool that you are offering to all your clients. In Lebanon we are very proud of lots of things but we are mainly proud of the tourism and the support it brings to our economy. One has to say that if tourism is a pillar of Lebanese economy we also have in tourism Le Gray which is a pillar of our capacity to always provide more and deliver more, deliver according to the reputation we have all over the world." Mr. Adwan also congratulated Hotel de Crillon for his awards and stressed that 3 out of its 5 representing managers at the awards are Lebanese. "This is Lebanon, the capacity to create and we are not ready to stop", he concluded.

The Villegiature Awards gather a voting jury composed of 23 international press correspondents and journalists from very reputed international media who vote by secret ballot and in total independence. The Villegiature Awards aim at rewarding the best of the best hotels in Europe, Asia, Africa and the Middle East.

The General Manager of Le Gray, Beirut Mr. Georges Ojeil expressed his pride for being among the 5 finalists for the Award of the Best Hotel in the Middle East and for receiving the Award of the Best Pool in the Middle East and stressed that: "this accolade is an achievement and a reward for all the team members whose efforts and dedication brought Le Gray to what it is today."



DOWNTOWN HAS ITS **GRAND SALON** NOW

LE GRAY
BEIRUT



Tel +961 1 971111

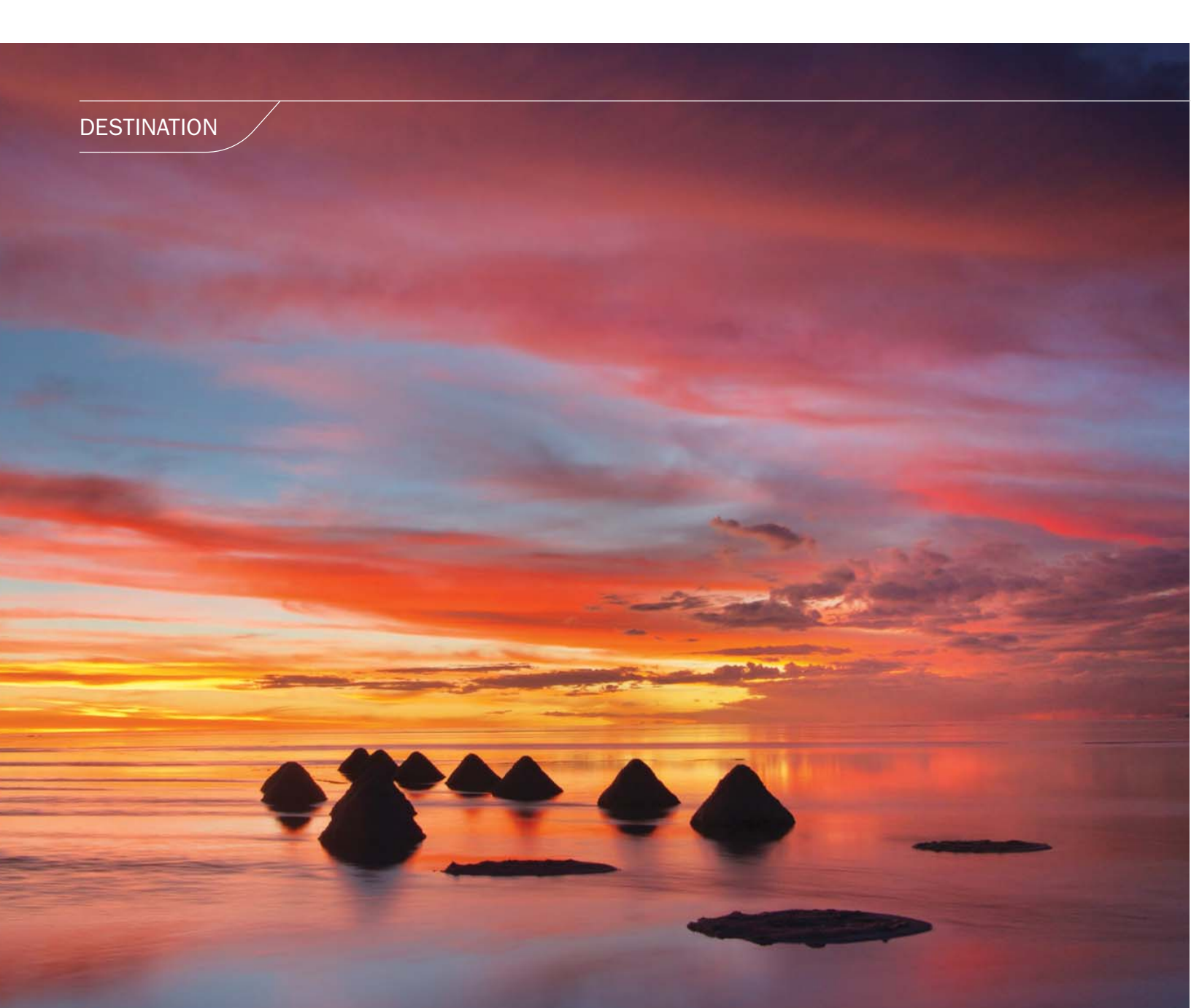
Martyrs' Square

Beirut, Lebanon

legray.com

A CAMPBELLGRAY HOTEL


THE LEADING HOTELS
OF THE WORLD®



MAGICAL SITES THAT REALLY EXIST

Art humans create fades away in comparison to the works crafted by nature.

Human creativity may be endless with different art works, sculptures, paintings and monuments, but still cannot be compared to sites forged by natural elements over the 4.5 billion years our planet earth has existed. The sites we will be mentioning do really exist as shown on the photos, hoping mankind will be wise enough to preserve them for the future generations and the decades and centuries to come.



THE MARBLE CAVES OF PATAGONIA: CHILE

This unique geological formation sits in waters shared by Argentina and Chile, is only accessible by boat. Over more than 6,000 years ago, lake currents lapped at the marble, slowly carving out the actual smooth formations. It dances with cerulean displays of colors when the water reflects its light. As a result it changes colors throughout the year, depending on water levels and seasons.



LAKE HILLIER: AUSTRALIA

An Australian lake whose pink defies scientific explanation. A 600 meters long saline lake off the coast of Western Australia, delights your eyes with its pink color. Lying just next to the Pacific Ocean, the contrast between the mellow pink of the lake and the blue of the ocean is striking. Some speculate that Lake Hillier's unique color is the result of *Dunaliella salina* microalgae (a pigment found in carrots). The other explanation is the reaction between the sodium bicarbonate that is found in the water and the halophilic bacteria in the salt. Its water stays distinctively pink all year and even retains its pink hue when bottled. The water of the lake is clear and causes no harm to the skin. In fact, swimming in the lake is safe but unfortunately forbidden to tourists, since the island is used only for research purposes. People can admire it only from above on helicopter rides.



SALAR DE UYUNI: BOLIVIA

Located in Southeast of Bolivia, it is the world's largest salt flat. The legacy of a pre-historic lake that went dry, leaving behind a desert like (nearly 11 square kilometers) landscape of bright-white salt, rocky formations and cacti-studded islands. At certain times of the year, nearby lakes overflow, and a thin layer of water transforms the flats into a stunning reflection of the sky. The landscape is home to the world's first salt hotel. Bolivia's Salar de Uyuni is considered as one of the most extreme and remarkable vistas in all of South America. Though wildlife is rare in this unique ecosystem, it harbors many pink flamingos.



MENDENHALL ICE CAVES: ALASKA (JUNEAU)

There is magic in the Mendenhall Ice Caves, where water runs over rocks under blue ceilings inside a partially hollow 19km long glacier (3,000 years old). Breathtaking blue walls shimmer in the glacier. While you might only see white from the exterior, all glaciers are inherently bright blue on the inside. This color, known as "Glacier Blue", is the result of air being squeezed from the frozen ice and snow. These caves usually form as water flows through a glacier and melts out a passage-way in the ice. Often, water pours in a hole in the surface of the glacier, before making its way out to the terminus, which could be the ocean. Unfortunately, because of global warming the glacier is retreating increasingly fast.



SON DOONG CAVE (PARADISE CAVE): VIETNAM (PHONG NHA-KE BANG NATIONAL PARK)

Son Doong Cave or “cave of the mountain river”, was formed in soluble limestone, and is believed to be between 2 and 5 million years old. The main cave passage is the largest known cave in the world, it is around 9 kilometers long, 200 meters high and 150 meters wide. What makes it so special is not only its huge size, but the cave has amazing examples of giant stalagmites (80 m high) enormous rim stone pools, giant pearls, large fossils over 300 million years old, as well as rare species of plants, and a number of new species of animals. The cave is punctuated by 2 large dolines (daylight windows), which are areas where the ceiling of the cave has collapsed, allowing sunlight to enter sections of the cave. The result is striking with growth of trees as well as other vegetation, creating large jungles inhabited by monkeys, hornbills and flying foxes. What is even more amazing is that the ecosystem created within the cave has its own weather system and creates its own clouds. Unfortunately, you need to be extremely fit and patient, as there is a waiting list of about 2 years. The Vietnamese government only releasing around 300-500 permits yearly to visit the cave.



TUNNEL OF LOVE: UKRAINE

The Tunnel of Love is a section of industrial railway located near Klevan (Western Ukraine). Just outside the city, a nearly 5km stretch of private railway has turned the surrounding trees into an enchanting natural tunnel, making it one of the most favorite places for couples to take walks, especially since the local legend says that it grants the wishes of visiting lovebirds, provided their intentions are sincere. The romantic setting earned this stretch of track its nickname, the “Tunnel of Love”. It is also called the “Green Mile Tunnel”, for the bright leafy branches that arch over the railway. The tunnel is at its lushest during the spring and summer when the trees are at the peak of their leafiness, but the colorful foliage of fall and snow-covered branches of winter is a captivating sight as well.

ETERNAL FLAME FALLS: USA

Small waterfall located in the Shale Creek Preserve, in Western New York. A small grotto at the waterfall's base emits natural gas, which can be lit to produce a small flame. This flame is visible nearly all year round. The Eternal Flame was said to have been lit thousands of years ago by Native Americans and has been kept alight by naturally formed gas. Baffled scientists admit they are unsure where the gas that keeps the landmark burning comes from. Thousands of eternal flames across the world are usually kept alight by gas formed from boiling hot ancient rocks. Those found beneath New York flame aren't hot enough to produce gas, which means that another process is producing the gas that is keeping the flame burning. Researchers also discovered that the gas seep in this fall, also features the highest concentration of ethane and propane of any seep in the world.



ZHANGYE D.LANDFORM (THE RAINBOW MOUNTAIN): CHINA

Located in Sunan and Linze counties, it covers an area of 322 km². Known for its colorful rock formations, smooth, sharp and several meters tall. They are the result of deposits of sandstone and other minerals that occurred over 24 million years ago. Wind, rain and time then sculpted extraordinary shapes, including towers, pillars and ravines, with varying colors, patterns and sizes. These layered sandstone mountains look like they are made of pressed crayons. This stupefying array of colorful geology is stunning, with its vivid reds, oranges and yellow stripe along the mountains in Technicolor harmony with rainbow rocks allegedly shaped like animals and mythical creatures. This geological park also offers several hiking areas and scenic overlooks to fully enjoy the color. It has been voted by Chinese media as one of the most beautiful landforms in China.



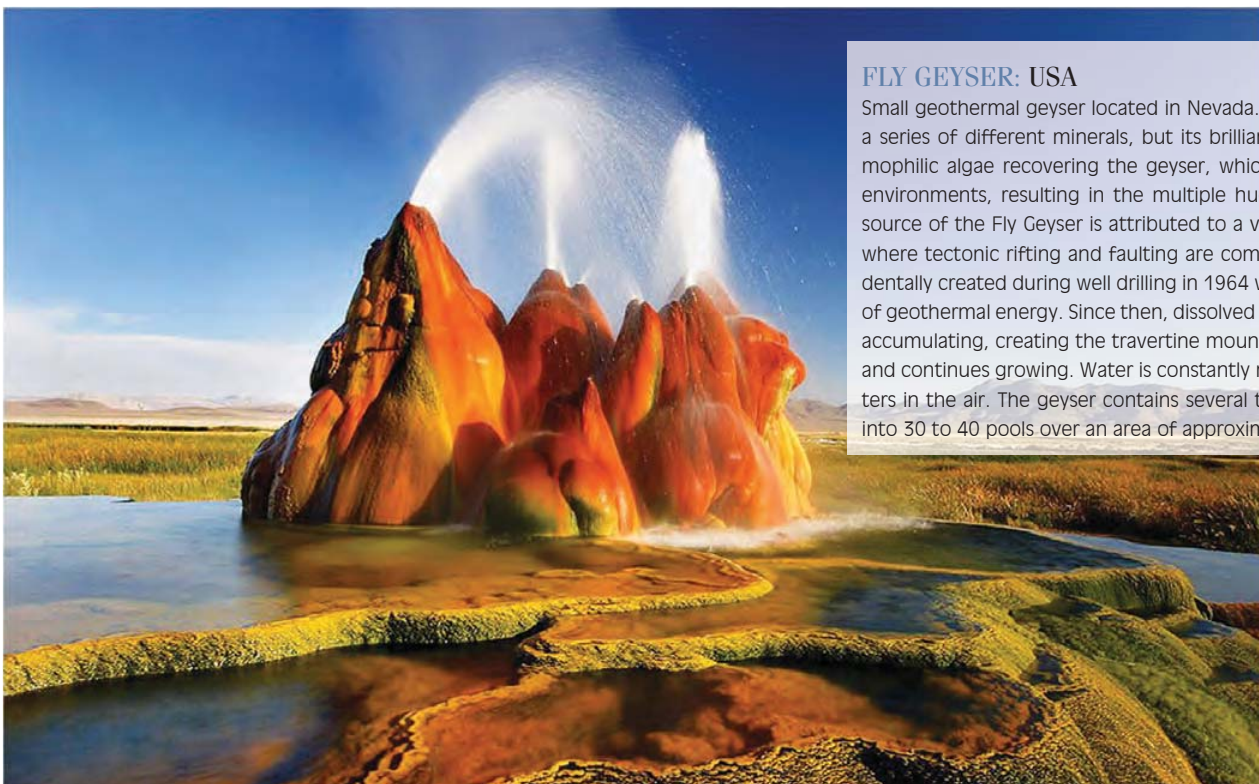
THE BLUE FOREST: BELGIUM

Each spring, a dreamlike carpet of bluebells overtakes the forest floor of this Belgian wood (near Brussels). "The Hallerbos", also known as the Blue Forest, is covered with millions of bluebells from late April into May, transforming the 5.5 km² woods into a floral carpet brushing up against the lean trees as far as your eyes take you. Visitors can stroll the winding paths, and watch for rabbits and deers that wander through the green and azure woods.



FLY GEYSER: USA

Small geothermal geyser located in Nevada. The geyser is made up of a series of different minerals, but its brilliant colors are due to thermophilic algae recovering the geyser, which flourishes in moist, hot environments, resulting in the multiple hues of green and red. The source of the Fly Geyser is attributed to a very deep pool of hot rock where tectonic rifting and faulting are common. Fly Geyser was accidentally created during well drilling in 1964 while exploring for sources of geothermal energy. Since then, dissolved minerals started rising and accumulating, creating the travertine mound on which the geyser sits and continues growing. Water is constantly released, reaching 1.5 meters in the air. The geyser contains several terraces discharging water into 30 to 40 pools over an area of approximately 30000 m².



LAPLAND

LAND OF THE MIDNIGHT SUN

Finnish Lapland is as close as reality gets to those who dream of a winter wonderland.





Lapland is Finland's northernmost region, a sparsely populated area bordering Sweden, Norway, Russia, and the Baltic Sea. The area is 100,367 km², consisting of dry land, rivers, lakes and sea areas. It is known for its vast subarctic wilderness, ski resorts and natural phenomena including the midnight sun and the Northern lights. Capital Rovaniemi is the gateway to the region.

If you want to visit the "real Santa Claus", you should go to Rovaniemi. The region has been associated to father Christmas since 1927, when Markus Rautio, a radio broadcaster, reportedly declared on-air that Santa's workshop had been discovered in Lapland. The notion of Santa Claus living in Finland became part of the public consciousness, the abundance of conifer trees (74% of the country is covered in boreal trees) and reindeers participated in the association of Lapland with Christmas.

Because of its festivities, leisure activities and attractions, winter is the best season to visit this region. Winter in Lapland is long (7 months), cold with freezing temperatures (reaching -30 degrees Celsius), and heavy snow occurring everyday (approximately 200 days of snow per year). Daylight hours are limited in this season from 10am to 2pm. The rest of the time is filled with darkness, providing excellent conditions to see the northern lights which are most visible between November and March.

Spring time is quite short in Lapland, appearing around the end of March and lasting until May.

During summer, the temperatures are usually between 10 and 19 degrees Celsius, with much less humidity. June is the sunniest month and July the warmest. In this season, the sun stays above the horizon at all times, and is famously known as the "Midnight Sun".

Warm, lemon-yellow sunshine on a blue lake, carpets of crimson berries, nowhere does autumn come in such a burst of colors. Locals even have a special name for this season, "Ruska" (which goes from September to October). Unfortunately it is the windiest time of the year.





The Ylläs Ski Resort,
ideal for Nordic skiing.



WHILE IN LAPLAND YOU CAN:

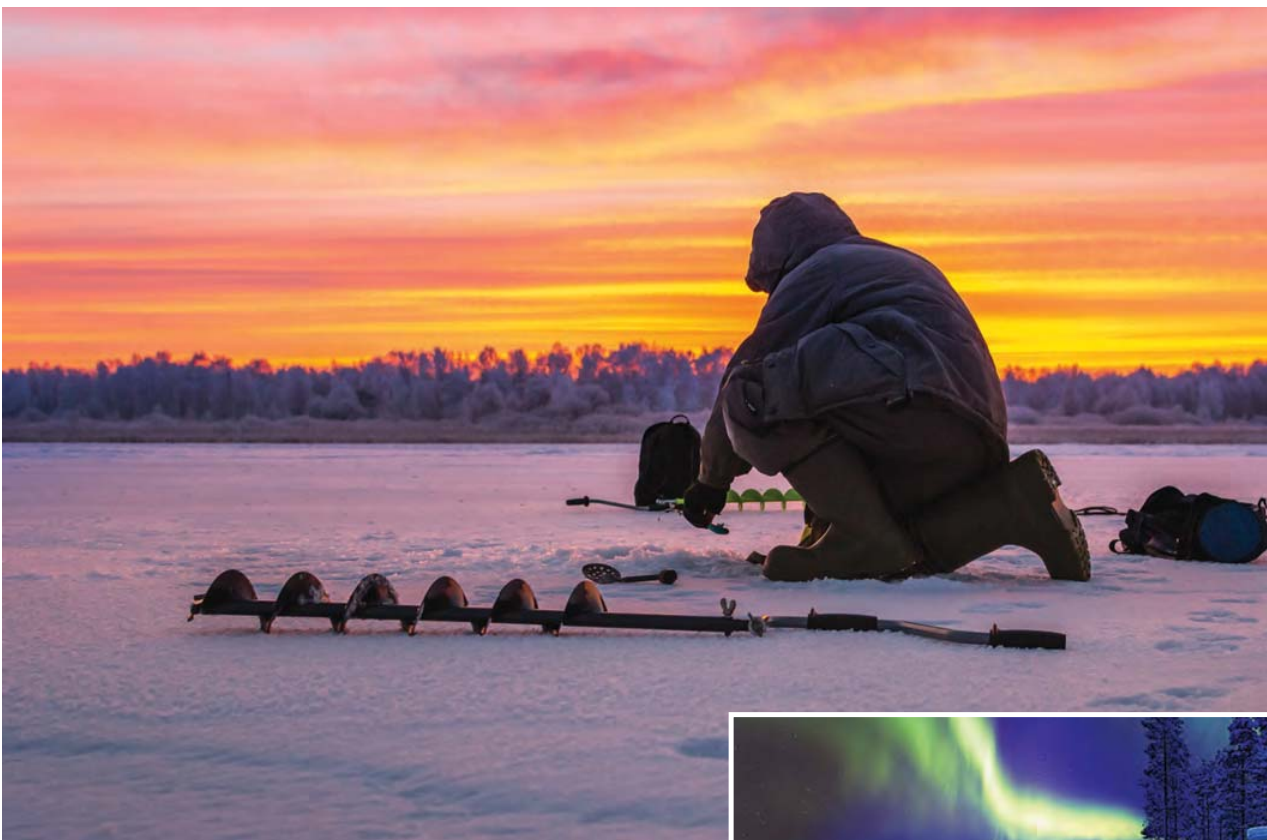
Visit or stay in a hotel entirely made of snow and ice: Snowman world in Rovaniemi and snow village in Kittilä. These hotels are rebuilt every year, with new designs and ice sculptures.

Snowmobiling: Is the main mode of transport in the winter season. You can do multi-day explorations heading all the way into Norway or Sweden. Experience the thrilling excitement of 3 hours snowmobiling through the snowy forests or the boundless lake area around Rovaniemi.

Dog-sledding: Husky safari with optional tracks, starting from 2 km rides in snowy forests, to several days tours.

Sauna gondola: Sauna is a major and essential part of the Finns culture. They built the one and only sauna cabin on a ski lift. Located in the ski resort of Ylläs in northern Finland, the wood-panelled sauna gondola runs on the 2km long ski lift. The sauna gondola starts when the ski-lift shuts down for skiers. It is equipped with a television screen and a small bar. While the gondola glides silently over the snow-covered slopes, you can admire the soft glow of the Arctic twilight.

Skiing: The Ylläs ski resort have very nice slopes, winding between gigantic trees, with dreamy wide powdery slopes, stunning scenery without the crowds. Ideal for Nordic skiing, backcountry skiing and snowboarding.



Reindeer safari: Experience the silence of nature in a noiseless reindeer sleigh ride in the forest. During the ride you will get to learn how to handle, treat and feed trained reindeers.

Catch the Northern Lights: Finnish Lapland is one of the main places to observe them. You can select between the Northern Lights Photography Tour at Rovaniemi, the Forest Sauna and Hot Tub with Northern Lights and the Northern Lights Sleigh (a 90 minutes ride).

Say Hi to Santa: Come and discover the secrets of Santa Claus, his trusted helpers, his official post office and meet Father Christmas himself. It is a year-round Christmas themed attraction.

Rovaniemi ice fishing experience: Drive a snowmobile to the frozen lakes in the forest, then try the art of ice fishing.

Night Hiking: in the land of the midnight sun: A late night climb to the scenic summit of Luosto Fell (100km north of the Arctic Circle) is a great way to experience the phenomenon of the midnight sun. It takes 2 hours to reach the summit with breathtaking panoramic view on unspoiled mosaic landscape of natural forest, bogs and lakes. The best time to experience hiking in Lapland is in June.





REGAL 1900 ESX - 2015

- Engine Volvo V6 200 HP (Gas)
- > **Special offer price:** \$ 47'500



TECHNOHULL 999 - 2018

- Twin Mercury Verado 350 (outboard)
- > **Price:** € 185,000



RIVARAMA SUPER - 2013

- Single cabin + crew
- Twin MAN 800 HP (diesel)
- > **Price:** € 725,000



MASTERCRAFT X-STAR - 2013

- Ilmor 6.2L OPS 430 HP (Gas)
- > **Price:** \$ 95,000



GALEON 325 - 2013

- 2 cabins
- Twin Volvo Penta D4 260 HP (Diesel)
- > **Price:** € 115,000



SUNSEEKER HAWK 31 - 1997

- Single Cabin
- Twin Volvo D3 190 HP (Diesel)
- > **Price:** \$ 68,000



MASTERCRAFT PROSTAR 197 - 2014

- Ilmor 5.7 OPS 320 HP (Gas)
- > **Price:** \$ 75,000



SUNSEEKER 62 - 2008

- 3 cabins + 1 crew
- Twin MAN 1100 HP (Diesel)
- > **Price:** € 535'000



FERRETTI 510 - 2009

- 3 cabins + 1 crew
 - Twin MAN 800 HP (Diesel)
- > **Price:** € 525,000



MASTERCRAFT X2 – 2014

- Ilmor 5.7L OPS - 320 HP (Gas)
- > **Special offer price:** \$ 117,000



SUNSEEKER 82- 2006

- 4 cabins + 2 crew
 - Twin MAN 1550 HP (Diesel)
- > **Price:** £ 985,000



CUSTOM LINE 97 – 2009

- 5 cabins + 3 crew
 - Twin MTU 16V M93 2400 HP (Diesel)
- > **Price:** € 2,750,000



FERRETTI 720 - 2013

- 4 cabins + 2 crew
 - Twin MTU 1524 (Diesel)
- > **Price:** € 1,685,000



PERSHING 74 - 2014

- 3 cabins + 1 crew
 - Twin MTU 1948 HP + SR 140S (Diesel)
- > **Price:** € 1,975,000



NAVETTA 28 – 2015

- 5 cabins + 3 crew
 - Twin MAN 1200 HP (diesel)
- > **Price:** € 4,900,000



SUNSEEKER 75 – 2004

- 4 cabins + 1 crew
 - Twin MAN 1500 HP (diesel)
- > **Price:** € 985,000

SEA PROS BRANDS

YOUR DREAM. OUR PASSION




FERRETTI
YACHTS


PERSHING


Itama


Riva


MOCHI CRAFT


CUSTOM LINE


CRN


REGAL


SEABOB


TECHNOHULL
SEABORN PERFORMANCE