

# SPLENDIDA

SPLENDIDA THE OFFICIAL MAGAZINE OF SEA PROS YACHTS N°7 - SUMMER 2016

**FERRETTI 850**  
Editor's Choice Boat

**ZAHA HADID**  
An Icon leaves us

**DESTINATIONS**  
Discover Amalfi Coast

**GIOVANNI ZUCCON**  
Power of Sight



# EDITORIAL

Summer 2016 | Issue No7



## A WIDE RANGE OF NEW INNOVATIONS ANNOUNCE A PROMISING 2016-2017 SEASON

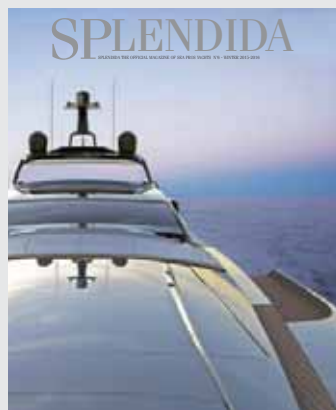
**Published by**  
Sea Pros Yachts  
[www.seapros.com](http://www.seapros.com)

**Executive Editor**  
Candice el-Khoury

**Sales & Marketing**  
Sea Pros Yachts  
Lebanon

**Art Direction**  
Tanya Salem

**Printing**  
Arab Printing Press



PERSHING 140'

As we step into the Summer Season, we renew our commitment to a new 'life' and to all good things to come, having this unbeatable permanent perspective of spending all day, every single day mapping and striving, as a team, to reach for excellence...and beyond.

The summer issue is definitely our very favorite. Why? Because everything is brighter: the sea is more turquoise, flowers are colorfully dressed, sunsets are of a vibrant orange and their majesty fills our minds with the most beautiful dreams.

So if you are looking for a little relaxation, take note of our top pick destinations, restaurants, and yacht clubs around the world; and discover with our 7th issue the best of outdoor furniture, worldwide artists and yacht designers. See how Splendida married Porsche and Riva and discover the newest yacht projects in the making.

This year's Ferretti Group's dealers meeting, held in April, was a major motivation for the team to kick-start a promising season with a wide range of new models soon to be launched from the Riva 38' to the Riva Corsaro 100', Ferretti 450, Custom Line 125', the improved version of the 124, Navetta 33M, 37M and the 42M which is featured in this issue along with the new Ferretti 850 and the revolutionary Pershing 140.

It is astonishing how impressive a season can be and how it can rejuvenate hopes and dreams...

Enjoy OUR summerish Splendida,  
Until next issue,

**Alain Maaraoui**

*President Sea Pros Yachts*

### SEA PROS BRANCHES

#### Lebanon

> Sea Pros Yachts building  
Dbayeh, Main Highway  
Tel: +961 4 411 555  
Fax: +961 4 411 666  
Mob: +961 3 407 600

> Zaituna Bay, Solidere  
Le Beirut Yacht Club  
Main entrance-Marina side  
Mob: + 961 3 335646

#### Dubai

Sea Pros Yachts LLC  
Office 2902/P73  
Level 29 Marina Plaza  
Dubai Marina  
Dubai, UAE  
Po Box 112229  
Tel: +971 4 5595719

#### Kuwait

Meshal Towet 17th floor  
Jaber Al Sharq Area - Kuwait  
Tel: + 965 222 50244  
Fax: + 965 222 50243

#### Saudi Arabia

King's Road Tower - Ground floor  
King's Road - Jeddah  
Tel: + 966 12 606 8783  
Mob: + 966 54 182 0636

# CONTENTS



Summer 2016 Issue No7



## UPDATES

- 4 **Latest News in the Luxury Market**

## EVENTS

- 8 **Latest events in the region**

## EDITOR'S CHOICE BOAT

- 12 **Ferretti 850**  
The boldest and most seductive

## LINES

- 22 **Custom Line Navetta 42'**  
Dreams are shaped in an incomparable floating villa
- 24 **Pershing 140'**  
The future is now defined
- 32 **88' Domino Super**  
The coupé evolution
- 42 **50m Expedition, 50m Superconero, and 50m Disopen**  
Special Edition
- 46 **Galeon 445' HTS**  
Your ultimate revolutionary cruiser...
- 52 **Regal 26' Express**  
Cruise to impress
- 54 **Rebirth of the Seabob F5 and F5S**  
With authorized service centers in Lebanon and Kuwait

## IN THE SPOT

- 56 **It's a luxury game**  
When Macan GTS & Cayenne GTS gather in the heart of Beirut with the outstanding Riva 92 Duchessa...
- 58 **New extremely sporty**  
And entry-level model additions to the cayenne portfolio



12 FERRETTI 850'



54 SEABOB F5 AND F5S



56 IT'S A LUXURY GAME



62

ZUCCON  
INTERNATIONAL PROJECT



72

BEST OF THE BEST



78

THE GREAT OUTDOORS



94

HAIR AND SKIN



104

AMALFI COAST

66

ZAHA HADID

- 62 **Zuccon international project**  
Giovanni zuccon: the power of sight
- 66 **Zaha hadid, 1950-2016**  
An icon leaves us
- 72 **Best of the best**  
The region's rising designers
- 78 **The great outdoors**  
Get inspired and step outside
- 84 **Beirut real estate trend watch**  
Full-aservice luxury apartments debut at le yacht club - beirut
- 86 **Antonisa, Pasquale Natuzzi's yacht**  
Perfect balance of beauty and harmony

#### FEATURES

- 90 **Luxurious Berths**  
Our guide to great Marinas
- 94 **Spring into summer with beautiful hair and skin**  
Look your best with six simple tricks

#### HOSPITALITY

- 96 **An edible Tour**  
Discovering great food
- 100 **Phoenicia InterContinental Hotel**  
Forever a landmark
- 102 **Le Vendôme InterContinental Beirut**  
Experience life at the highest level of luxury

#### DESTINATION

- 104 **Amalfi coast**  
Life in colors

#### PRE-OWNED

- 110 **Boats for sale**

#### LISTING

- 112 **Sea Pros brands**  
Your dream, our passion



Wider 150, the breathtaking yacht constructed entirely in aluminum

# WHAT'S UP?

## LATEST NEWS IN THE LUXURY MARKET



### NEW PICTURES RELEASED AFTER THE LAUNCHING OF THE WIDER 150

Wider 150, the breathtaking yacht constructed entirely in aluminum was designed by Fulvio De Simoni in collaboration with Tilli Antonelli and the in-house WIDER design team.

Launched on the 21st of October 2015, WIDER 150 is unique in her ability to provide a number of luxury features only usually found on a larger vessel.

1. Beach Club – At 90m<sup>2</sup> including a 7m swimming pool, this is the biggest in her competitive set
2. 32' rigid tender on board – Allows owner access to the smallest creeks and bays in complete comfort and safety
3. Owner's Apartment – 75m<sup>2</sup> including 4m<sup>2</sup> sea terrace, also the biggest in her competitive set
4. Forward lounge with opening roof – terrace on foredeck offering absolute privacy to owner and guests
5. Bridge -State-of-the- art, full ECDIS, bridge with push button system to give wrap around controls for the Captain
6. Diesel-electric propulsion combined with Azimuthal pods – The first yard to offer the benefits of a full diesel-electric system in this size range
7. The ability to run solely on battery power for a full night or whilst using the beach club – no noise or vibration or smoke or smell

New pictures of the yacht have been released by Wider proving once again that the vessel is a one of a kind piece of art characterized by modern interiors, endless futuristic features and outstanding exterior lines.





## SEA PROS YACHT MANAGEMENT DEPARTMENT: 360 SERVICE

Yacht management is the basis of each and every yacht's efficiency, and owner's full satisfaction. Sea Pros Yachts' dedicated team currently composed of 30 crew members from captains to deckhands and stewardesses, managed by Captain Sari Nakhoul, holds a solid experience and understanding of modern yachting, offering services tailored to satisfy the owner's needs and wants.

Between vessel provisioning and cleaning to total yacht managing, lies a wide array of services that the team provides ensuring the owner's full satisfaction all year long.

## NAVETTA 33 TO BE DELIVERED TO A LEBANESE CLIENT IN JULY 2017

Marked by quality, sophisticated harmony, elegance and balance, the new Navetta 33 is the perfect spacious yacht to fulfill any boater's passions. That was the case for Sea Pros' Lebanese Client who will receive his white Navetta in July 2017. Navetta 33 just like all the Ferretti Custom Line range, is customizable. The yacht's furnishings, fabrics, décor etc... can be modified to meet the owner's taste and preferences.

The new Yacht is the evolution of the 33 Crescendo and is set to be a full-displacement boat.

## FERRETTI GROUP'S 'IT EVENT' OF THE SEASON IN MONACO

Friday September 2nd, Saturday September 3rd and Sunday September 4th 2016 in Monaco at the Monaco Yacht Club, Ferretti Group will be throwing one of the biggest yachting events of the year open for invited guests only. Around 20 Yacht jewels will be showcased in the beautiful Monaco Marina on the calm waters of the French Riviera, where many world premieres will be revealed. Further details will be released soon regarding the program and the boats on display.





The new C-Class Coupé.  
Instantly thrilling.

Mercedes-Benz  
The best or nothing.



**T. GARGOUR & FILS S.A.L.**  
The Exclusive and Sole Agent

Dora: 01. 255366, Bouar: 09. 446222

[www.mercedes-benz.com.lb](http://www.mercedes-benz.com.lb)



# THE NEW MERCEDES-BENZ C-CLASS COUPÉ

## SEDUCTION OF THE HEART AND MIND



**A**thletic and sporty, the vivid, sensuous design of the new Mercedes-Benz Coupé cuts a fine figure on the road and embodies modern luxury. At the same time, its interior elevates beauty and style to a sporty level. A dynamically configured chassis, with optional air suspension, forms the basis for a high level of suspension comfort, low road roar and tire vibration, agile handling, and driving pleasure. Lightweight construction to reduce weight, excellent aerodynamics and high-performance, efficient engines likewise play their part. As the sportiest variant of the C-Class, the Coupé displays its driving enjoyment-oriented character in an emotive and at the same time formally distinct design. Clean lines and sensually arranged surfaces structure the side sections into vivid light and shadow effects. One particular highlight is the long drawn-out dropping line typical of a coupé.

The interior is likewise a statement of the Mercedes-Benz design philosophy of sensual purity and combines emotion with intelligence. Although it exudes athletic and youthful charm, it has grown in maturity. Driver and passengers enjoy an ambience that leans toward the interior of the C-Class Saloon yet raises it to a new, sporty level. With an 80 millimeter longer wheelbase, the C-Class Coupé is 95 millimeters longer and 40 millimeters wider than the predecessor. The increased vehicle volume above all creates more spaciousness for the driver and front passenger. There is more shoulder room, elbow room and headroom on all seats.

Drivers can choose the character of their Coupé at the push of a button: sporty, comfortable or consumption-optimized. To this end, the driver can select one of five driving modes using the DYNAMIC SELECT switch: "ECO", "Comfort", "Sport", "Sport +", and "Individual". Selecting "Individual" allows the driver to customize the vehicle settings to personal preferences.

Powerful and efficient four-cylinder petrol engines with ECO start/stop function provided for sporty performance and driving pleasure.



# WHAT'S HAPPENING?

## LATEST EVENTS IN THE REGION



### SEA PROS YACHTS FOR THE 9TH CONSECUTIVE YEAR AT THE DUBAI INTERNATIONAL BOAT SHOW 2016

Every year, over 850 international, regional and local exhibitors from more than 50 countries showcase their boats and products yearly to the Middle East's and international marine investors and enthusiasts at the Dubai International Boat Show, this year was definitely no exception.

Sea Pros Yachts was honored to serve their clients and boat admirers for the 9th consecutive time at the show, with their exhaustive experience, extensive knowledge and credibility in all marine-related fields.

The team was present at the Ferretti Group Booth representing: Ferretti Yachts, Ferretti Custom Line, Pershing, CRN and Mochi Craft.

In addition, a separate booth on water display as well was reserved for Galeon and Seabob, where the unique Galeon 500 Fly was displayed, brilliantly manifesting Galeon's potential in terms of design, engineering, architectural excellence and price competitiveness.





THE BALCONY CREW

*Yachts that reflect you*

[customline-yacht.com](http://customline-yacht.com)



**DISPLACEMENT YACHTS**

NAVETTA28 NAVETTA33 Crescendo NAVETTA37 Project NAVETTA42 Project

**PLANING YACHTS**

108'

**SEA PROS YACHTS**

LEBANON | JORDAN | KUWAIT | SAUDI ARABIA

[www.seapros.com](http://www.seapros.com)



**CUSTOM LINE**

a Ferretti Group brand

### PERSHING 62 AND GALEON 500 FLY SHOWCASED BY SEA PROS YACHTS AT KUWAIT YACHT SHOW 2016

Sea Pros Yachts was present this year at the Kuwait Yacht Show 2016 from February 1st till the 4th, representing Ferretti Group namely Ferretti Yachts, Pershing, Riva, Itama, Mochi Craft, CRN, Custom Line, along with Galeon, Regal, Sealver and Seabob. The Galeon 500 Fly was displayed after being showcased as a world premiere in Cannes Yachting Festival 2015 where she stole the International scene's spotlight bringing an incomparable series of innovations to the Galeon range.

In addition, Pershing 62, the true boating gem characterized by a fresh streamlined profile was also showcased, manifesting the new Pershing direction enhancing innovation, practicality and performance.

The Kuwaiti boating market will always remain an important market to Sea Pros and the show specifically is considered as a centralized yachting hub where the company can present the latest in models, innovations and advanced technologies from world renowned shipyards, to a broader range of prospects.



## WHAT'S HAPPENING?

### LATEST EVENTS IN THE REGION



#### CANNES YACHTING FESTIVAL: THE UNMISSABLE ULTIMATE RENDEZ-VOUS

The Cannes Yachting Festival is taking place this September from the 6th till the 11th in the dreamy bay of Cannes.

Just like every year major players in pleasure yachting gather during this show to launch the season by showcasing their new worldwide models.

"The Vieux Port" and "The Port Pierre Canto" will host international exhibitors and boating enthusiasts in an incomparable fascinating setting where almost 600 boats displayed on water and on land, hundreds of world premieres and a new space created for luxury : La terrasse situated in the rooftop of the Palais des Festivals exclusive for the stakeholders of the luxury industry and for high-end servicing.

Just like every year, Sea Pros will be present on the Ferretti Group Booth to serve the Middle Eastern clients and assist them with the adequate knowledge and services on all brands represented.







## The freedom to wake up every day with a different view of the sea.

Our yachts are created to allow you to experience  
the luxury of freedom at sea in maximum comfort and style.



450 NEW | 550 | 650 | 700 | 750 | 800 | Altira 840 | 850 NEW | 960

**SEA PROS YACHTS** - [www.seaproxyachts.com](http://www.seaproxyachts.com)  
LEBANON | JORDAN | KUWAIT | SAUDI ARABIA | BAHRAIN

  
**FERRETTI**  
YACHTS  
*A Sea Of Life.*

a Ferretti Group brand  
[www.ferretti-yachts.com](http://www.ferretti-yachts.com)



EDITOR'S CHOICE BOAT





# FERRETTI 850

## THE BOLDEST AND MOST SEDUCTIVE

*Presented at BOOT 2016 in Dusseldorf, the new project stands out for its sophisticated exterior profile and exclusive interior layout. It is a luxury floating apartment, where design, comfort, and performance reach unprecedented heights.*







**P**owerful beauty, aggressive charm, elegance and luxury blended together in an unprecedented formula: This is what our Editor's choice boat is all about!

The Ferretti Yachts 850 is yet another extraordinary masterpiece in the almost 50-year history of a brand that has conquered the international markets with its large and wide-ranging fleet, which currently includes 8 models between 45 and 96 feet in length.

The new model - result of the intense collaboration between Ferretti Group's Product Strategy Committee, Studio Zuccon International Project for the exterior design and interior layout, and the Group's Engineering Department for the naval and technical engineering, design and fitting out of the interior, will be built in the Cattolica shipyard and make its official public debut early in September this year.

#### EXTERIOR DESIGN

The waterlines draw inspiration from the successful 80-footer Ferretti Yachts and have been adapted to the in-

creased length of the hull, which is now 85.4 feet (26 meters) LOA with a construction length below 24 meters (LH 78.8 feet), thereby falling within the classification category for recreational boats.

The Ferretti Yachts 850 is immediately striking for its bold profile, characterized by sharp angles that give it a strong and aggressive personality. The two trapezoidal hull windows with integrated portholes have been extensively restyled and are very large and extremely streamlined to maximise the amount of natural light and provide magnificent views from the inside.

This specific design element will become the distinctive feature of the brand's largest yachts and differentiates them from the new Ferretti Yachts models below 80 feet, which will feature three separate windows.

The main deck enhances the yacht's dynamic personality, thanks to a single glazed window that cuts across the entire superstructure. The profile is completed by the flybridge with its optional fore-and-aft hard top over the raised pilothouse and roll bar in Vulcan Grey to contrast with the ivory white of the hull and superstructure.



### FLYBRIDGE AND EXTERNAL FORWARD AREA

The Vulcan Grey roll bar is installed over the sundeck. Owners can extend the shaded area in two ways: either with a hard top that stretches towards the stern, or with a hard top that includes a fixed extension and a central area with a sliding awning or glazing.

The flybridge can be entirely furnished with freestanding furniture to suit individual owners' needs and tastes.

On the port side, the practical and comfortable helm station features a large divan seat with room for the co-pilot too. On the starboard side is the cocktail bar with several storage compartments and worktops.

There is a second outdoor lounge area on the foredeck for relaxing in utmost privacy when moored stern-to. Designed to maintain the family feeling of the successful layout of the Ferretti Yachts 550, the area is even more spacious and features a large central sunpad, seating and a dinette with height-adjustable table.

Upon request, the area can be sheltered with umbrellas and curtains to increase privacy and comfort. The technical mooring equipment is housed separately in the forepeak.



Practical and comfortable outdoor areas on the 850.





“An innovative mechanism opens and folds down the transom door, which becomes a beach area that can also be lowered under the water.”

## FERRETTI 850'

### Technical Specifications

Engines/ Power	2 x MAN V12	2 x MAN V12
	1800 mhp@ 2300 rpm	1900 mhp@ 2300 rpm
Maximum Speed	29 Knots (Range: 285 nm)	31 Knots (Range: 280 nm)
Cruising Speed	26 Knots (Range: 310 nm)	27 Knots (Range 305 nm)
Cabins	4 Cabins + 2 Crew	
Length Overall	26 m	
Max Beam	6.28 m	
Displacement Laden	77.49 T	
Fuel Tank Capacity	6750 L	
Water Tank Capacity	1320 L	

### AFT AREA AND COCKPIT

The aft area can be enjoyed to the fullest thanks to an innovative mechanism to open and fold down the transom door, which becomes a beach area that can also be lowered under the water. Not only does this provide guests with a large submersible platform, it also makes tender operations easier for the crew (the garage can fit up to a William 385). Upon request, a second tender or water toy and davit crane can be placed on the flybridge.

The cockpit can be accessed from both sides and is furnished with a multi-purpose sofa, which can be used both as a chaise longue and seating for diners at the large outdoor table thanks to the collapsible backrest.

On the starboard side towards the bow, under the staircase leading to the flybridge, several storage compartments and an ice-maker can be installed, as well as optional mooring controls. Just like on a maxi yacht, there is exterior access to the engine room via a portside door.

### MAIN DECK INTERIORS

Passing through the glazed sliding door, an open space including a salon and a dining area extends for over 10 metres. All the furniture and fittings redefine the architectural and design 'language' of yachting.

The Ferretti Yachts 850 is indeed a new luxury icon, offering owners the opportunity to live in a magnificent maxi loft surrounded by the sea.





# FASTRAC

26% FASTER - 30 % MORE FUEL EFFICIENT

A Regal Boat earns its reputation for inspiring performance based on the design of its hull - the core over which everything else is built. In independent tests, Regal's FasTrac® Hull was 30% more fuel efficient and 26% faster. Engineered with a full-beam step, reversed chines, and dynamic lifting strakes to deliver higher speeds, straighter tracking, more stable cornering, and a smaller appetite for fuel. This patented innovation has garnered acclaim and awards from the industry and our selective owners.

To find your nearest dealer visit [RegalBoats.com](http://RegalBoats.com)



SEA PROS YACHTS | [www.seapro.com](http://www.seapro.com)

REGAL FASTRAC MODELS:

1900 | 2000 | 2100 | 2250 | 2300 | 2500 | 2550 | 2700 | 2750 | 24 FasDeck | 27 FasDeck

Geometrical designs on the main deck define futuristic interiors.



## FERRETTI 850' LAYOUTS

> 26 Meter



> Profile



> Fly Bridge



> Main deck



> Lower deck

The creative decor is the result of the Group Engineering Department's interior designers, who worked side by side with international trend research experts to ensure the project would represent a break with conventional standards of onboard furnishings. Indeed, the living style is in line with the latest developments in residential architecture, characterized by sober minimalism and relaxing simplicity.

Instead of following the geometry imposed by the superstructure, straight lines, flat surfaces and linear panelling dominate the interior. Thanks to the use of perpendicular partitions, almost full-height glazed surfaces, the light and pleated curtains, and mainly freestanding furniture, the main deck space is pervaded by a sense of contemporary, metropolitan elegance. The new yacht features design elements by Minotti, with whom Ferretti Group has cooperated to integrate accessories, wood selections and the built-in furniture.

Beyond the dining area stands an original bookcase with open frames in brushed metal and fumé glass cube compartments, which divides the salon from the lobby while preserving visibility and a sense of proximity.

The main bulwark, visible in the background through the open bookcase, is lined with a Florim ceramic material for a natural stone and marble effect. Another innovation is the ceiling consisting of a series of lacquered transverse slats that create a dynamic decorative pattern and add style to the artificial lighting, while disguising the air conditioning vents and audio speakers. The galley comes in two possible layouts. In the first, it is located forward beyond the lobby and the helm station, and is completely separate from the guest area. It is fitted with Ernestomeda furniture and a large cooking top.

Beside it and near the stairs that lead to the crew cabins is a convenient dinette. In the second layout, conceived with an eye to the American markets, the galley is located slightly further aft along the port side and includes a cocktail bar overlooking the sea. This solution makes conviviality onboard even more enjoyable and further provides a lounge area forward of the helm station.





The raised pilothouse, accessible from both the starboard passageway and the central lobby, can also be reached by the captain and crew directly from their own cabins, without having to walk through the main salon.

### LOWER DECK

Below deck the Ferretti Yacht 850 offers generous spaces for owners and guests. The airy master stateroom was designed in cooperation with Minotti in the style of the main deck salon. Besides the central double bed, it features a study area along a sidewall, as well as a large wardrobe and spacious storage compartments.

The TV has been installed on the wall opposite the bed, while a partially-satin glazed wall on the extreme left opens into the bathroom with large shower stall, two washbasins and WC. Behind the suite, the transverse fuel tank and insulated partition serve to minimize noise and vibration from the engine room. The lower deck hosts two spacious VIP double cabins, one amidships on the port side and the other forward. A fourth starboard cabin is fitted with twin beds. All the guest cabins have en-suite bathrooms and separate shower.

The crew quarters are located in the extreme bow and include two cabins with bunk beds and private bathroom.



Modern interiors marked with a warm color blending along with the best high-end furniture picks.





Master Cabin & Master Head



### ENGINES AND PERFORMANCE

The Ferretti Yachts 850 will be equipped with MAN engines and owners will be able to choose between two options: twin V12 1800 mhp engines for a cruising speed of 26 knots and a maximum speed of 29 knots, or more powerful twin V12 1900 mhp engines for a cruising speed of 27 knots and a maximum speed of 31 knots (preliminary data).

To personalize the yacht to owners' specific needs both when cruising and at anchor, Seakeeper active gyro stabilizers or Zero Speed hydraulic stabilizing fins can also be installed upon request.



BEING UNIQUE  
IS A GIFT TO BE SHARED



DOLPHIN 74' Cruiser | 64' Cruiser | 54' | 54' Fly | 44'



SEA PROS YACHTS  
[www.seapro.com](http://www.seapro.com)  
LEBANON | JORDAN | KUWAIT | SAUDI ARABIA



**MOCHI CRAFT**

THE SEA DEMANDS PASSION

a Ferretti Group brand





LINES

# CUSTOM LINE NAVETTA 42'

DREAMS ARE SHAPED IN  
AN INCOMPARABLE FLOATING VILLA

*At "Yachts Miami Beach 2016" press conference, Ferretti Group announced the birth of Navetta 42 that represents the further extension of Custom Line semi-displacement series.*





The Group has announced the birth of the biggest Custom Line Navetta ever built, the astonishing Navetta 42. The Navetta 42 is the first Custom Line ship over 300 GT and it will be launched in 2018. The new ship is designed by Studio Zuccon International Project under the guidance of the Ferretti Group's Strategic Committee and developed by the in-house Engineering Department.

#### PREVIEW DETAILS

- The ship will offer on its four decks even bigger spaces for the Owner and guests.
- Just like all the Custom Line super yachts, interiors and exteriors are fully customizable.
- Owner will enjoy his huge suite on the main deck, while the versatile lower deck is able to be designed with 4 VIP or 5 suites.
- Captain will have a private cabin on the upper deck with direct access to the pilot house, while the crew area may be fitted with up to 7 berths.
- As in the 37-meter, the new Navetta 42 will ensure the most efficient organization of on board flows, offering total privacy for the Owner and the guests, and great freedom of movement for the captain and the crew.
- The stern area consists of a huge beach club at the sea level, devoted to leisure time, thanks to the side opening garage water toys launching system.
- Custom Line Navetta 42 will be available with 5 different engine options, powering from 1,400 to 1,825 Mhp. The ship will be able to reach a transatlantic range of more than 3,000 n.m. at the economic cruising speed of 10 knots (preliminary data).





LINES

# PERSHING 140'

## THE FUTURE IS NOW DEFINED

*It is the first aluminum Pershing superyacht in the brand's 30-year history.*









**T**he 2015 edition of Monaco Yacht Show wrote a new page in the history of one of Italy's most extraordinary yachting brands. It was not by chance that Pershing chose to present its new flagship in the world capital of megayachts.

The Pershing 140, the first to be built in light alloy, is expected to make its debut in 2018.

#### EXTERIOR DESIGN

The new 140-footer (LOA: 42.53 m) is the result of the cooperation between and among Ferretti Group's Product Strategy Committee, its Engineering Department, and architect Fulvio De Simoni.

It will be the first Pershing yacht to be built at the Group's Ancona boatyard, which specializes in the construction of steel and aluminium super and megayachts over 40 meters in length.

With this new flagship, the brand is indeed stepping into

a new design and construction era, combining its traditional strong drive towards innovation with the heritage of 30 years spent in the forefront.

The new superyacht features an aggressive outer profile, characterized by an aluminium hull and a superstructure with few composite material inserts on the main deck. Once in the water, it will express the vessel's powerful character to the fullest. This craft is imposing and yet not too austere, with extremely sleek lines that reflect the brand's sporty character.

Engineering activities focused on the development of a well-integrated project, aimed at ensuring that every design element is truly harmonized with the others. Extensive studies were carried out on the hull, partially drawing inspiration from military models, to create an innovative hull that would guarantee performance values up to the Owners' expectations.

At the same time, in spite of this superyacht's extremely sporty personality, maximum comfort had to be ensured on-board. For this reason, a wide-body Owner's suite was de-

"I am sure the Pershing 140 will be the greatest 'thrill' ever in Pershing's history."

Ferretti Group's CEO Alberto Galassi.





signed on the main deck - a solution that required raising the forward part of the hull, further increasing the vessel's powerful, majestic look.

The yacht's profile also features several design elements, including some unprecedented ones that preserve the family feeling with the brand's most recent models. The most glaring example of this are to be found in the two side wings integrated in the superstructure and anchored to the gunwale at the beginning of the side decks. On the new 140-footer this stylistic feature - by now a unique element of the latest Pershing generation - effectively protects the cockpit private lounge on the sides. The slender, contemporary-style bow too contributes in enhancing the yacht's aerodynamic profile.

Moreover, a steel grid in the front part - reminding of coupé cars - further highlights the sporty and futuristic look of Pershing Yachts.

### AFT BEACH CLUB AND COCKPIT

The design of the aft cockpit has been totally revisited to offer the Owner an amazing and exceptional experience of comfort and relaxation. The theatrical effect and unique layout is obtained by raising the external part of the cockpit and turning it into a mezzanine directly connected with the beach club below, the upper deck and the more internal part of the cockpit. All this creates a vast outdoor area over the sea, which rises from water level to the sundeck, interlinking the entire aft space.

Indeed, the mezzanine:

- allows the internal lounge in the garage to be on the same level as the external platforms and not at a lower level, as on other yachts; this allowed to create a very large water-level beach club, with fully-accessible floor space overlooking the sea;
- protects the privacy of the second cockpit lounge, reachable by walking down a few steps towards the bow of the yacht and sheltered at the sides by the large wing glazing;
- facilitates the flow of guests, who can easily move between external areas or proceed forward into the salon on the main deck.







## MAIN DECK INTERIORS

Pershing 140 owners will be able to design the interiors of their superyacht with the assistance of architects and designers of Ferretti Group's Engineering Department and will have the opportunity to supplement or alter the various layout solutions offered by the Shipyard.

Walking past the glazing on the cockpit, guests can access a light-flooded open space, designed to make them feel immediately welcomed. The latter space comprises a living area followed by a dining area. To the left of the living space are the stairs leading to the galley and the crew cabins.

The central part of the main deck regulates flows between the various decks and leads to the captain's quarters and the Owner's suite. A lobby to the left allows to climb up to the pilot bridge or use the day toilet.

Further down, the captain can access his/her own private cabin with separate head. To the other side, towards the bow of the yacht, the lobby with the stairs leading to the guest cabins, followed by the large private cinema/play room,



STOP  
BOATING.  
START  
PERSHING.

www.pershing.it



**PERSHING**

*STAND OUT*

PERSHING 140 108 92 82 74 70 62 5X

PERSHING-YACHT.COM

A FERRETTI GROUP BRAND

SEA PROS YACHTS - [www.seapro.com](http://www.seapro.com)  
LEBANON | JORDAN | KUWAIT | SAUDI ARABIA | BAHRAIN





Nothing but futuristic lines  
on the 140 coupled with  
incomparable outdoor areas.

which the Owners can alter to their liking. Further down is the wide-body Owner's suite. Fitted with forward-facing double bed, desk to the left and lounge to the right, it enjoys beautiful panoramic views and maximum privacy. In the forward most section of the cabin are a large walk-in wardrobe to the right and two large separate heads to the left.

#### LOWER DECK

With four guest suites, including three VIP double suites and one twin cabin, the lower deck accommodation is perfectly in line with what one would expect from a superyacht of over 40 meters. Two of the VIP cabins are positioned along the sides, towards the stern, while the third one is located at the extreme bow. The twin cabin with private head, instead, is situated on the left side of the yacht. Besides the large wardrobes and private heads with separate showers, the two aft VIP suites also feature a desk area overlooking the sea through the large hull glazing.

The forward most VIP cabin is of a standard comparable to that of a master cabin, with desk area to port, comfortable lounge to starboard, a spacious walk-in wardrobe and a large private head. The crew quarters are very comfortable too. After climbing below decks from the internal salon or the left side deck and walking past a lobby, crew members will find the spacious galley along the left side of the yacht. After a door to starboard, conversely, they can enter the dinette and then walk towards the bow to reach the three cabins with bunk beds and private heads. From the lobby, crew members can also directly access the plant room and the engine room. Another door leads to the garage which, once the tender and the jet sky have been launched, can be turned into an internal lounge for the beach club.

#### UPPER DECK AND EXTERNAL FORWARD LOUNGE

On the Pershing 140 the upper deck blends perfectly into

the overall profile of the yacht, with its central section containing the aerials and satellite systems, being protected by a hard top. This area is primarily a large panoramic terrace that can be entirely furnished with freestanding units. It can be accessed from the mezzanine section of the cockpit or the raised pilot bridge, which is directly connected with the outdoor control station. The yacht also features large and innovatively-designed external forward spaces. Moreover, Pershing 140 offers its guests another private area, protected by the waves, so that it can be comfortably used just after cruising. After climbing the steps on the side decks above the deck house, at the height of the wide-body Owner's suite, guests can relax on the large forward sun pad, beyond which is a large lounge concealed by a platform that can be opened up when the yacht is anchored or moored up. Also the furnishings in this private area can be entirely chosen by the Owner.

#### ENGINES

The Pershing 140 currently comes in three possible engine configurations. The first two options include two MTU 4000 M93L engines, either 12V (3460 HP) or 16V (4613 HP). Hydro-jet propulsion will ensure outstanding performance in terms of both cruising and maximum speed - the latter will reach 24 knots when 12V MTU engines are installed and 33 knots if the more powerful configuration is chosen (preliminary data).

A third option is the installation of four MTU M94 2600 HP engines, which ensure a maximum speed of 38 knots (preliminary datum). As is the case of all Pershing yachts, top-of-the-range electronic and home automation systems will be installed. Similarly, in line with the tradition of a brand that never compromised the performance while ensuring maximum onboard comfort, the new 140-footer will be equipped with cutting-edge stabilization systems, allowing guests to enjoy the utmost comfort even when at anchor - at the end of a truly 'thrilling' day, like only Pershing can give.



THE PINNACLE OF PERFORMANCE DESIGN  
ALL NEW CTS-V



V8 6.2L SUPERCHARGED ENGINE  
640HP & 855NM OF TORQUE  
0 TO 100KM/H IN 3.7 SEC



SUB-DEALERS

•Monza Cars- Ramlet El-Baida- Tel (01)810455  
•Sarkis Motors- Zalka Highway- Tel (01)884594

 /IMPEX.Lebanon

•Dabboussi Group sal- Tripoli- Tel (06)410555  
- Koura- Tel (71)830555

 /impexlb

[cadillac.impex.com.lb](http://cadillac.impex.com.lb)

EXCLUSIVE DEALER | **IMPEX**  
SINCE 1957

Badaro - Tel: (01) 615715



LINES

# 88' DOMINO SUPER

## THE COUPÉ EVOLUTION

*Super power engraved*









LINES







It is super, and not just because it is extraordinary, but also because this suffix, in Riva yachts names, marks the evolution of the Riva species.

The 88' Domino Super is bound to set new standards in the yachting sector in terms of style, comfort and performance. Boasting an overall length of 26.70 meters (87.7') and a beam of 6.30 meters (20.8') it is the result of the cooperation between Officina Italiana Design - the design firm led by Mauro Micheli and Sergio Beretta that pencils the entire Riva range - and Ferretti Group's Engineering Department.

This yacht immediately strikes the eye for its slender, streamlined profile, which is further highlighted by the color of the hull, a dark grey that has been named 'London Grey'. The same innovative color shade can also be found in some deck details and harmoniously contrasts the light grey (Moon Grey) of the superstructure.

Other important design solutions bear witness to the great value of this evolution:

- The new sundeck highlights the yacht's sporty character, while offering guests additional comfort.
- The outdoor pilot station has been moved to the central part of the boat and has a very limited size, thereby making room for a large sofa at the bow.
- The large continuous hull glazing, featuring a very aggressive design, extends across the yacht, almost like an arrow, from the central part of the boat to the extreme bow; the stainless steel plate bearing the Riva logo, just in the middle of the glazing, is the 'seal' on this masterpiece.
- The fully-restyled aft area completes the yacht's dynamic features; its outstanding technical equipment and solutions perfectly harmonize with the craft's sporty look and offer additional comfort to all guests, making technical operations extremely easy.








## AFT AREA AND COCKPIT

Extensive changes increasing the guests' comfort and making the crew's work much easier can immediately be noticed in the aft area.

The transom, which can be lowered completely into the water, offers a convenient platform to dive into the sea and get back onboard, besides making tender launching and hauling operations much easier, also thanks to the inclined base of the garage. The engine room too has been reorganized, installing some of the main appliances in the most easily accessible areas.

The cockpit can be reached from the transom via a few steps located on the sides. It is a real outdoor lounge, furnished with a comfortable C-shaped sofa/chaise longue, beyond which another sofa stands in front of the dining table. Some outdoor foldable chairs, stored in the table base, can seat up to 6 people. The cockpit is completed by a low cabinet with a sink, on the port side, near the access to the crew quarters, while to starboard, under the stairs leading to the sundeck, another unit contains the icemaker and a storage compartment where, upon request, an additional pilot station can be installed, allowing to manage mooring operations from this area.



Spacious outdoor areas on the Domino Super marked by the trendiest leather furniture.

## MAIN DECK

Beyond the glass door, access is gained to the main deck interiors, featuring - from stern to bow - a living room, a dining room, and the pilot station. The salon is an open space enjoying a magnificent view over the sea - a glaring example of Riva's unmistakable style.

A harmonious blend of wood, leather, and polished stainless steel, further highlighted by the LED lighting system, characterizes the onboard décor, both on the main deck and below deck. Extremely sophisticated solutions can be admired inside: striped rosewood - a dark wood with reddish grains - combines with 'Ice White' or dark leather to create impressive contrasts, resulting in a classical, refined elegance that is further enhanced by the natural light shining through the continuous glazing along the sides and the front windshield.

The living room is furnished with two sofas to portside faced by a third one on the right-hand side, all by Knoll and in 'White Artic Sea' leather, combined with decorative cushions by Hermes and Dedar. A steel and dark-leather coffee table completes the furnishing.

Walking further, the dining area is located on the left: the large glass and leather table features a section that can

slide towards the center, thereby allowing up to 8 people to enjoy a pleasant meal sitting on the 'Donald' leather chairs by Poltrona Frau. Starboard, two low cabinets can be used to store all tableware and glassware.

The forward area has been modified from the previous model: moving the pilot station to the starboard side has allowed to install a storage compartment at medium height, separating the two stairways leading to the galley, on the left, and below deck, in the center, respectively.

This has also made it possible to install a new windshield, supported by a central stanchion, while right of the pilot station there is now an electric window similar to those found on motor vehicles. The two-seat pilot station itself is concealed by a ceiling-high wall on which the TV screen has been mounted. The TV can be electrically oriented towards the dining area.

The rearrangement of the bow area has also led to a partial restyling of the galley: located on the mezzanine floor, it can also be accessed directly from the portside outdoor walkway; it has no ceiling panels and thus makes the most of the incredible amount of light ensured by both the hull glazing and the windshield.



## RIVA 88' DOMINO LAYOUTS

> 26.84 Meter



> Profile



> Sun deck



> Main deck



> Lower deck

### LOWER DECK

A first flight of stairs allows reaching the lobby, which leads forward to the three guest cabins, while to starboard, towards the stern, a door opens up onto a second series of steps taking to the full-beam master stateroom, located amidships. This very airy cabin, which benefits from plenty of natural light thanks to the two hull windows and the port-holes, is furnished with a low cabinet and a desk/vanity set to starboard. The furniture includes other freestanding units that can be chosen by the Owner. The double bed, on the left-hand side, is in front of the wall-mounted TV screen. Behind the cabin, across an access room, are the Owner's bathroom and the large walk-in wardrobe, which is completed by two additional wardrobe modules, one in the access room and the other one forward, beside the stairs.

The Owner's bathroom, characterized by innovative design and décor solutions, features two Capannoli washbasins, fitted with Ritmonio taps, standing in front of the toilet. The shower can be found to portside; it is separated from the rest of the bathroom by a glass door and has shiny black walls and a white Corian floor.

The three guest cabins - all with ensuite head and separate shower - are very bright thanks to the new hull glazing. The two standard guest cabins are one to the right and one to the left of the lobby - the former has single beds, while the latter is furnished with a sliding double bed. The VIP cabin is located at the extreme bow, and features a double wardrobe.

On this 88' Domino Super the crew quarters, located behind the master stateroom and having direct access to the engine room, include two cabins with bunk beds; an 'in-column' washing machine and, upon request, tumble dryer; the galley area, opposite the dinette; and the head.

Interiors are bathed in natural light, filtering through the large window openings.



# Riva

NOTHING ELSE



88' DOMINO SUPER

ISEO • AQUARIVA SUPER • RIVARAMA SUPER • RIVALE • SPORTRIVA 56' • 63' VERTIGO • 63' VIRTUS • 68' EGO SUPER  
75' VENERE SUPER • 76' PERSEO • 88' DOMINO SUPER • 88' FLORIDA • 100' CORSARO • 122' MYTHOS

# Riva

A FERRETTI GROUP BRAND

[www.riva-yacht.com](http://www.riva-yacht.com)

SEA PROS YACHTS  
LEBANON | SAUDI ARABIA | KUWAIT | BAHRAIN  
[WWW.SEAPROS.COM](http://WWW.SEAPROS.COM)

**Riva**  
EXCLUSIVE DEALER





Master Cabin & Master Head



SUNDECK AND FORWARD AREA

The 88’ Domino Super’s sporty DNA is expressed to the fullest by the new sundeck.

A large C-shaped dinette, forward, can be found in front of the outdoor pilot and control station, whose new position, in the central part of the boat, ensures the best possible yacht management. Large relaxation areas can be found aft, featuring a spacious central sun pad. More space is available on the deckhouse, at the bow, where guests can enjoy the utmost privacy sitting at the dining table in the dinette facing forward or relaxing on the large central sun pad.

ENGINES AND PERFORMANCE

The new Riva coupé yacht can boast performance values at the top of its class. In the standard version, the yacht is equipped with two MTU 16V 2000, 2435 Mhp engines, allowing it to reach a maximum speed of 38 knots and a cruising speed of 34 knots. As an option, two MTU 16V 2000, 2638 Mhp engines can be installed instead, pushing the yacht up to 40 knots and ensuring a cruising speed of 35 knots. In order to offer the utmost comfort even when the yacht is at anchor, two Seakeeper stabilizers can be installed, upon request, aft of the engine. Moreover, to make mooring operations even easier, a second propeller can be installed aft, in addition to the forward one.

Improved features, sharp lines, luxurious bright interiors and top performance, make this Riva a true Mythic Heroine.

RIVA 88’ DOMINO  
Technical Specifications

Engines/ Power	Twin MTU 16V 2000 power 2435 mhp / 1792 kW at 2450 rpm (STD)	Twin MTU 16V 2000 power 2638 mhp / 1939 kW at 2450 rpm (OPT)
Maximum Speed	38 Knots (Range: 310 nm)	40 Knots (Range: 300 nm)
Cruising Speed	34 Knots (Range: 330 nm)	35 Knots (Range 320 nm)
Cabins	4 Cabins + 2 Crew	
Length Overall	26.84 m	
Max Beam	6.29 m	
Displacement Laden	75.2 T	
Fuel Tank Capacity	7500 L	
Water Tank Capacity	990 L	



ALL IN ONE



mycine.it

GET EVERYTHING. POWER, SPACE AND STYLE.  
LIVE ITAMA.

**itama**  
POWER IS OPEN

A FERRETTI GROUP BRAND

itama45

itama62

itama75

SEA PROS YACHTS  
EXCLUSIVE DEALER FOR  
LEBANON | SAUDI ARABIA | JORDAN | KUWAIT  
[WWW.SEAPROS.COM](http://WWW.SEAPROS.COM)  
[WWW.ITAMA-YACHT.COM](http://WWW.ITAMA-YACHT.COM)





CRN'S DESIGN AND ENGINEERING BLEND  
TOGETHER TRADITION AND INNOVATION WITH:

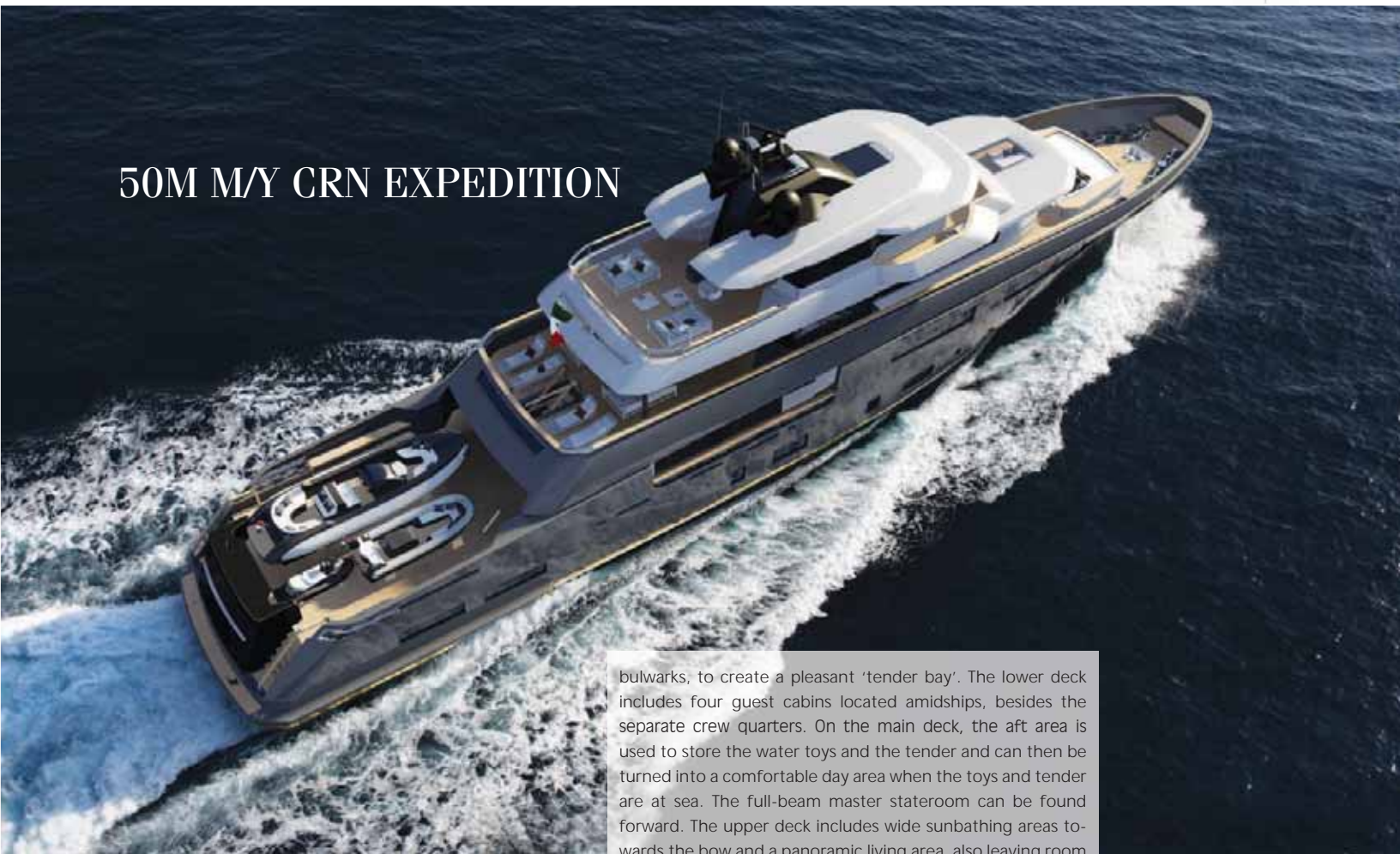
# 50M EXPEDITION, 50M SUPERCONERO, AND 50M DISLOPEN SPECIAL EDITION.

*CRN, the shipbuilder specialising in the construction of steel and aluminium pleasure vessels between 50 and 90 metres in length, is presenting its new design projects, developed in cooperation with Zuccon International Project, which include a line of semi-custom products aimed at meeting the needs of an ever-evolving and increasingly diversified market.*

*50m Expedition, 50m Superconero, and 50m Dislophen Special Edition are three entirely different projects preserving CRN's DNA while reinterpreting some of the brand's must-haves through a range of innovative solutions.*



## 50M M/Y CRN EXPEDITION



bulwarks, to create a pleasant 'tender bay'. The lower deck includes four guest cabins located amidships, besides the separate crew quarters. On the main deck, the aft area is used to store the water toys and the tender and can then be turned into a comfortable day area when the toys and tender are at sea. The full-beam master stateroom can be found forward. The upper deck includes wide sunbathing areas towards the bow and a panoramic living area, also leaving room for a large aft outdoor terrace.

The Expedition stems from the idea to develop a project capable of representing at best the concept of 'Go anywhere' – a timeless yacht, able to cruise across time.

This steel and aluminium, bulb keel displacement yacht, designed by Zuccon International Project and engineered by CRN, is 50 metres long and 9 metres wide and falls within the 500 GRT class. She develops over 4 decks and features 1 master stateroom and 4 VIP cabins, plus the cabins hosting the 7 members of the crew.

This yacht's main distinctive feature is her impressive flexibility, allowing the Owners and their guests to enjoy life on board with the utmost versatility. The vessel's dynamic, fast-changing areas can be modified depending on the passengers' needs, also reducing consumption, so as to experience life at sea in the 'greenest' possible way. The concept of a customizable and functional layout is taken to extremes and makes the Expedition the ideal yacht to ensure great onboard versatility, depending on the specific features of the area where the yacht is cruising.

### THREE DIFFERENT LAYOUT CONFIGURATIONS ARE POSSIBLE.

In the first layout the beach club is aft, and is connected to an open living area with collapsible terraces in the two

The second configuration has been conceived to ensure a large storage and diving area aft, for those Owners wishing to spend a long time at sea without ever stepping ashore; water toys and the tender are stored aft on the main deck: once they have been launched, this area can be fitted and enjoyed as a day area. The indoor living area, conversely, has been conceived to be a true 'open air' terrace overlooking the sea, creating one single space with the cockpit. This deck also hosts two guest cabins, while the master stateroom and the other two guest cabins can be found on the lower deck.

The third possible layout features a large storage and diving area aft on the lower deck, which also includes two guest cabins and the galley. On the main deck, water toys and the tender are stored aft: once they have been launched, this area can be fitted and enjoyed as a day area. In this case too, the indoor living area has been designed to be a true 'open air' terrace overlooking the sea, creating one single space with the cockpit. On this deck are also the dining room and two guest cabins. The upper deck features a panoramic 'Al Fresco' dining area, a large aft outdoor terrace, and the master stateroom towards the bow.

In all three layouts, the pilot house and the captain's cabin are located on the sun deck. The crew quarters are on the lower deck, separate from the guest area.





## 50M M/Y CRN SUPERCONERO

The name draws inspiration from the historic 'Super Conero', dating from the Sixties. This steel and aluminium displacement vessel is 50 metres long and 9 metres wide, and falls within the 500 GRT class. She is designed by Zuccon International Project and engineered by CRN Engineering.

This magnificent yacht features all the main solutions conceived by CRN, such as the special balcony that can be enjoyed even when cruising; the terrace opening up onto the sea, perfect when the yacht is at anchor; the aft beach club; and, last but not least, the float-in garage for the tender, which results in one single, open area connected to the beach club, creating a wide lounge area by the sea.



## 50M M/Y CRN DISLOPEN SPECIAL EDITION

Under the name 'Dislopen' (deriving from open and displacement), CRN has developed a new design concept, offering a highly exclusive way of experiencing yachting and cruising, always ensuring a direct contact with the sea and relying on increased comfort and even larger onboard spaces, especially outdoor. This 50m-long and 9-m wide yacht, designed by Zuccon International Project and engineered by CRN Engineering, can host up to 10 people, who find accommodation in a master stateroom and 4 VIP cabins, as well as 9 crew members. All CRN design solutions can be found onboard this vessel: the balcony, the beach club, and the float-in garage.

All three new projects come with two C32 Caterpillar engines allowing them to reach a maximum speed of 15 knots and a cruising speed of 14 knots, ensuring a maximum range of 3800 nautical miles at 11 knots. The yacht is certified to Rina and MCA standards.







LINE

# GALEON 445' HTS

## YOUR ULTIMATE REVOLUTIONARY CRUISER...

*The 445 Hts joined the amazing third-generation Galeon model lineup with its brilliant, awe-inspiring design. This sport oriented, open-deck model, focuses on providing high maneuverability and a thrilling ride while still maintaining an exceptional level of comfort.*







LINES





The layout of the 445 HTs was conceived to offer a convenient and spacious living arrangement.

The cockpit area is occupied by a settee and sundeck and can be divided by the retractable glass doors to help keep the elements at bay. In addition, at stern, the large hydraulic garage and platform can handle all personal water paraphernalia including dinghies and jet-skis. A smaller garage option can be selected to take advantage of the larger U-shaped sofa for the guests.

The Wide side decks on both sides lead to the bow where boaters can take advantage of the bow leisure area with a protective bimini where they can either bath in the sun or enjoy a cold drink with an open sea view.

The main deck features a U- shaped sofa, wet bar and a helm station with double seats, all bathed in natural light penetrating the interior, from a large glass ceiling and wide side windows that can open in a matter of seconds.

Down below, comfort and convenience have not been neglected: the luxurious master cabin, located amidship, boasts an en suite bathroom for added privacy. The guest cabin holds the bow and has direct access to the common areas: galley, lounge and an additional bathroom.

Galeon 445 HTS is a pure manifestation of how smart designers will be treating boats of this size in the future.

## GALEON 445' HTS

### Technical Specifications

Length overall	14,98m
Beam overall	4,25 m
Draft max. (canoe body)	0,82 m
Mass of Light Craft Condition	14050 Kg
Fuel Tank Capacity	2 x 600 L
Water Tank Capacity	450 L
STD Engines	VOLVO PENTA
	2XD4-300 DPH
Crew limit	12







## GALEON 445' HTS LAYOUTS

> 14,98 Meter



> Upper Deck



> Lower Deck

On the lower deck, two luxurious cabins with en-suite heads are connected by a living area and a galley.



A wide range of engines with IPS or stern drive propulsion systems is available along with a comprehensive list of additional equipment and several interior design lines.

The 445 HTS has it all, with its sleek lines, sporty disposition and very well-designed outdoor and indoor areas, this Galeon can be your ultimate revolutionary cruiser!





## THE FUTURE OF INNOVATION



Galeon Yachts offers a wide range of luxury crafts up to 82 feet.  
The stunning third generation models all share the same design principles:  
Edgy exteriors, Abundance of natural light and Bespoke interiors.

Designed to make your dreams come true!



# REGAL 26' EXPRESS

## CRUISE TO IMPRESS

*The Regal 26 Express combines the latest technologies and new amenities in a beautiful, functional package. The innovative interior layout and ergonomic cockpit design provide room for everyone to enjoy.*



*Regal 26 Express has all the practical features that will grant you an unforgettable weekend at sea.*

### REGAL 26 EXPRESS

#### Technical Specifications

Length Overall	8 M
Beam	2.4 M
Fuel Capacity	273 L
Maximum Persons Capacity	Yacht Certified
Fresh Water Capacity	76 L
Waste Tank Capacity	68 L
Maximum capacity	8

ocial seating all over the boat makes your guests communicate easily and enjoy sun sessions on the comfortable sunlounges. A spacious contemporary salon and mid cabin are perfectly designed for an afternoon nap. Also, down below a modern galley adds extra style to the boaters' dining experience with beautiful countertops and handcrafted cabinetry.

Options on the Regal 26 Express include: Volvo 300 with duo prop drive, power tower, air conditioning, alcohol / electric stove, pump out toilet, snap in sea grass mat, flexiteak swim platform, foredeck sunpad, TV w/ DVD, Garmin 100 VHF radio, and more.

Regal 26 Express is the perfect place to spend your long weekend and pass on the boating tradition to the ones you love most!







# REBIRTH OF THE SEABOB F5 AND F5S

## WITH AUTHORIZED SERVICE CENTERS IN LEBANON AND KUWAIT

*With top performance and easy handling, Seabob F5 and F5 s are back in the game! Authorized service centers in Lebanon and Kuwait are now operational with all the required parts and equipment to grant buyers after-sales peace of mind.*





The Seabob F5 and F5S are user friendly, much lighter than the older F7 version and fitted with advanced reliable technology, boasting impressive propulsive forces and an E-jet emission-free power system.

The user can glide along at a relaxed pace in low gear or, for more ambitious high speed driving, switch up to higher gears!

The Seabob F5 can reach a speed of 15 km/h above the water and 11 km/hour underwater as for the F5S, 20km/h above the water and 15 km/h underwater.

Extremely efficient, high-energy lithium-manganese accumulators provide the power for the drive mechanism, which can be programmed by means of electronic controls to guide

the SEABOB down to a diving depth of up to 40 meters.

The Seabob is the absolute paragon of cutting edge technology, quality right down to the last detail. For people looking for intense water fun, Seabob is built with the greatest thrill factor in the world. They can be used by 8 years old kids as well as grown up adults, and their electrical drive makes them completely ecologically sound.

Its design is fascinating. Its concept is unique. The SEABOB is a real eye catcher, available in amazing new colors (Standard & Special).

A sporty water toy with easy handling coupled with a top performance, fully equipped authorized service centers in Lebanon and Kuwait and one year full warranty...

What more could you ask for?



## SEABOB F5 AND F5S

### Technical Specifications

	F5	F5S
MOTOR:	2.5 KW	4.0 KW
WEIGHT:	29 KG	35 KG
SPEED:		
Underwater:	11 km/Hour	15 km/Hour
Overwater:	15 km/Hour	20 km/Hour
OPERATING TIME:	50 Minutes	60 Minutes
CHARGING TIME:		
Standard Charging Approx:	8 Hours	8 Hours
Quick Charging Approx:	1,5 Hours	1,5 Hours





IN THE SPOT

# IT IS A LUXURY GAME

## WHEN MACAN GTS & CAYENNE GTS GATHER IN THE HEART OF BEIRUT WITH THE OUTSTANDING RIVA 92 DUCHESSA...

*In the heart of the city, next to the bluest stagnant waters, reflecting the most amazing skyscrapers, Riva 92 Duchess hosted two pioneers in the automotive performance world: Macan GTS and Cayenne GTS. That's when the luxury game got real...*

Photos By Greg Demarque.









Cayenne GTS rear view  
Macan GTS front view

# NEW EXTREMELY SPORTY AND ENTRY-LEVEL MODEL ADDITIONS TO THE CAYENNE PORTFOLIO

## CAYENNE GTS: RESONANT - IN MORE THAN NAME ALONE

Through its name alone, the Cayenne GTS announces its outstanding sporting characteristics. With the letters GTS going back to the famous 904 Carrera GTS of 1963, in 2007, the Cayenne GTS became the first Porsche of the modern era to revive the acronym. Since then, at Porsche the GTS title has signified the brand's especially sporty models. Alongside the new GTS and completing the Cayenne portfolio at the lower end of the range, is the new entry-level 3.6-litre, V6 petrol engine Cayenne.

The Cayenne is to-date Porsche's most successful range, with the four-door sports cars in general making a major contribution to the company's profitable growth. As a result, it has played a fundamental role in ensuring future investment in the broad spectrum of highly dynamic models offered across the entire portfolio.

Whether two or four doors, Porsche drivers like their cars to be sporty. A 3.6-litre V6 bi-turbo engine is the performance-oriented enhancement of the new power unit presented in the Cayenne S. Its consumption is lower and



*Macan GTS: interior*

it delivers improved levels of performance. Compared to the previous model with a V8 naturally aspirated engine, power output rises by 20 hp to 440 hp and torque by 85 Nm to 600 Nm, while fuel consumption goes down by up to 0.9 l/100 km. The Cayenne GTS accelerates from 0 to 100 km/h in 5.2 seconds, or 5.1 seconds with the optional Sport Chrono package. That's 0.5 and 0.6 seconds respectively less than the previous model. Top speed is 262 km/h. As standard it has a sports exhaust system, which provides the undeniable GTS sound.

Thanks to its suspension the Cayenne GTS captivates drivers with its unmistakable lateral dynamics. The Porsche Active Suspension Management (PASM) damping system has a sporty set-up; alongside standard air suspension the vehicle sits 20 millimetres lower. Additional standard features include the brakes from the Cayenne Turbo with 390-millimetre discs on the front axle (358 millimetres at the back), inclusive of brake callipers painted red in typical turbo fashion.

Several design attributes also externally showcase the sportiness of Porsche's new Cayenne GTS. As standard it has the turbo nose section with large air intakes and the Sport Design package including; more contoured side sills, wheel arch exten-

sions, roof spoiler and lower rear of the vehicle, all painted in the car body colour. All around the car, the colour black provides some striking contrasts: all lettering is black, as are the 20-inch wheels in the RS Spyder design, the exhaust tailpipes, the bi-xenon headlights' inner apertures and the fittings of the darkened LED rear lights. The striking GTS lettering is also a new external feature that can be found on the front doors.

The sporting characteristics are also apparent in the cars' interior. Eight-way electrically adjustable GTS sports seats in leather/Alcantara upholstery, with GTS lettering on the headrests are fitted as standard. Alcantara is the predominant upholstery material featured inside the car. The interior GTS package is optionally available in carmine red or rhodium silver with rev counter face, decorative stitching, headrest lettering and safety belts in contrasting colour.

The Cayenne GTS has celebrated its world premiere on November 19th at the 2014 Los Angeles Auto Show. The Cayenne GTS model is now available at Porsche Centre Lebanon showrooms:

*The basic retail prices in Lebanon are as follows:*

*Cayenne GTS: USD 164,000*







*More performance, more driving  
dynamics, more driving fun*

### **PORSCHE MACAN GTS: THE THOROUGHbred SPORTS CAR AMONG SUVs**

The all-new GTS version of Porsche's compact SUV provides driving experiences that surpass those which have become customary with the Macan. Like all Porsche models that bear the three letter insignia, the Macan GTS is inspired by motor racing. A reengineered chassis, 20 hp more than the Macan S and reinforced brakes are some of the features on offer in the latest addition to the Stuttgart-based manufacturer's GTS line-up.

With an output of 360 hp and 500 Nm of torque, the Macan GTS places in-between the Macan S and the Macan Turbo. The technical basis for this comprises of a three-litre V6 bi-turbo engine from the Macan S, accompanied by the Porsche Doppelkupplung (PDK) and Porsche Traction Management (PTM) with flexible power distribution between front and rear axles. Completing the zero to 100 km/h sprint in 5.0 seconds with the optional Sport Chrono package, the Macan GTS has a top speed of 256 km/h.

The GTS version of Porsche's compact SUV combines a high level of driving dynamics with outstanding everyday utility. A sportier tuning of the PASM chassis lowered by 15 millimetres, along with 20-inch RS Spyder design wheels with matt black paint finish and mixed tyres (front: 265/45 and rear: 295/40), are some of the new sporty features. Also, in keeping with iconic Porsche styling are the standard GTS sport seats with Alcantara centre panels, additional Alcantara trim in the interior as well as a distinctive sounding sports exhaust system. The new Porsche Communication Management (PCM) celebrates its SUV debut in the Macan GTS.

The Macan GTS can be recognised at first glance thanks to a range of exterior accents finished in black, this includes high gloss in the upper and matt finish in the lower areas of the car, as well as GTS-specific colouring, that comes as standard. For the first time, the Macan GTS is also available with the option of LED headlights including Porsche Dynamic Light System Plus which guarantees optimum illumination of the road under all conditions.

Based on its special qualities, the new Macan GTS offers even more driving fun. With this model, Porsche is once more underlining its claim that the Macan is the sports car among compact SUVs.

*MACAN GTS retail price available for order at all Porsche Centre Lebanon Showrooms, the basic retail price in Lebanon is USD 129,000.*

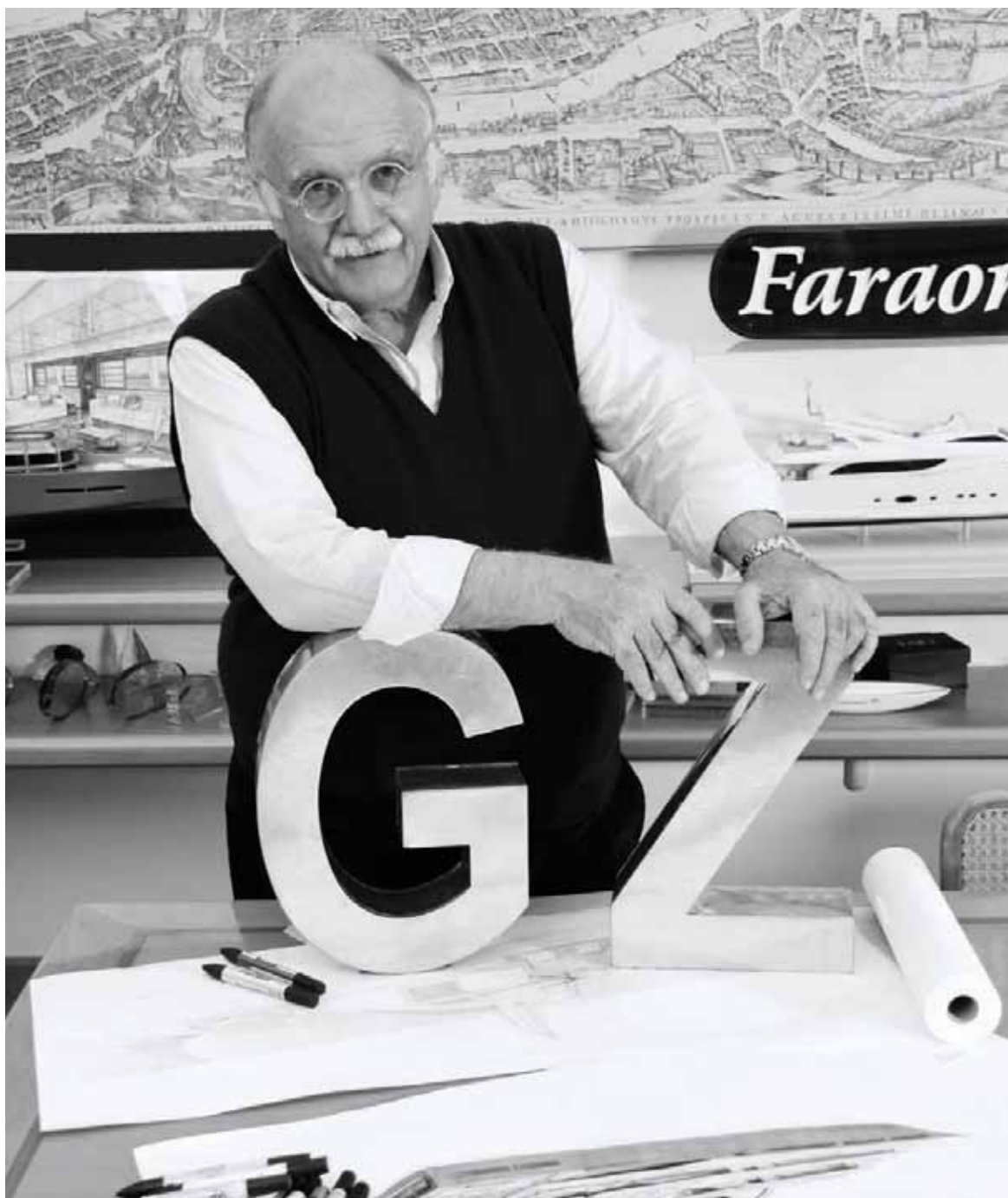




# ZUCCON INTERNATIONAL PROJECT

## GIOVANNI ZUCCON: THE POWER OF SIGHT

*Founder of Zuccon International Project, Giovanni Zuccon has been behind the most breathtaking yacht designs in the world since the start of his career. Here's a glimpse of his life and vision:*





**G**iovanni Zuccon and his wife Paola Galeazzi started working as yacht designers in 1976 and founded Zuccon International Project in 1984.

Bernardo and Martina followed their parents' path and joined the group, incorporating modern ideas into new designs.

The Zuccos started up their superyacht career with the 46-metre Baglietto "Al Fahed" in 1986 and more recently designed the outstanding 80-metre CRN Chopi Chopi sold by Sea Pros. Now Bernardo and Martina have established a new division: 'Zuccon Superyacht Design', focusing on megayachts, and targeting international clients from

the Ferretti Group along with other clients with whom they had past associations for decades.

SPLENDIDA has interviewed Mr. Giovanni Zuccon in order to draw an elaborate image of the designer's career path, his unbreakable bond with his family, a snap of his life and passions, and last but not least the upcoming projects of the group.

**SP What made you so passionate about design generally and yacht design more specifically?**

I graduated in Architecture because I have always been interested in the human living space and in the possibility to intervene in order to enhance the conditions of a person's



“ In Martina & Bernardo's method, respect and consideration for history and great attention to the human being and his needs.”





Gianni Zuccon



“Chopi Chopi, a yacht unique in the world...”

Ferretti Custom Line Navetta 28'



life. Design, meant as a project, underlies this process of transformation and yacht design, in particular, is amazing in offering the chance to work in a peculiar context where life conditions allow everyone to feel united with the environment.

**SP** Chopi Chopi stunned the world, what are the major obstacles that you encountered while designing the 80-metre superyacht? And what were the major features incorporated for the first time on this superyacht?

I'm very satisfied with the result obtained with Chopi Chopi. The project didn't present obstacles or specific problems despite the large dimensions of the yacht and, therefore, its complexity. Chopi Chopi, a yacht unique in the world, is a vessel that was designed for a very nice family: the owner was willing to cooperate with us, open to our suggestions

and proactive; this kind of attitude gave birth to a unique condition that simplified the entire design work and strongly identifies the project.

**SP** What do you think, besides customization, is the major difference between megayacht and yacht (50' to 120') design?

The difference between the two dimensional categories lies basically in the greater complexity, that is to say in the variable presence of qualitative and quantitative elements. The customisation concept, beyond the differences due to the dimensions, is always possible.

**SP** Where do you draw ideas from for your new projects? And how do you keep these ideas current?

I believe that ideas are always born from critical reflections about the human being, his way of living, of inhabiting spaces in the sea and, therefore, about the way to interpret life on board. The modernity, seen as a constant search to understand transformation's process, clearly is – and should be – at the base of every design expression.

**SP** Is there a boat that you have designed that you would love to have as your own?

Sure, there is. It will certainly be the next one I'll design, because it will be better than the others.


**SP** Are there any new projects that you are working on? If so, can you provide us with some information?

The studio is now working on several products of different dimensions, from the smallest 45-feet, to be realized in series in composite material, to the biggest 111-meters, to be realized in steel. At the moment, this is everything I can say about our current projects.


**SP** Do you benefit from Bernardo and Martina's contemporary ideas and young futuristic vision while designing new yachts?

I certainly do. The contributions of Martina and Bernardo are important, not only because they are young, but also because, throughout their academic studies and their work at the studio, they have acquired a methodology that I consider to be very positive. There is, in their method, respect and consideration for history and great attention to the human being and his needs.

**SP** What advice would you give to emerging designers and students who are entering the yacht industry?

Unfortunately, in these times I detect a small amount of humility and a lot of presumption from young designers and design students. These two aspects I believe to be very important, above all for those who have their mind set on becoming designers. Humility allows you to grow and improve in your profession, the control of presumption prevents you from bad falls, from feeling like you are the best in the world, which I personally consider a dangerous condition, because the moment you think of it you are already 'doomed'. 



Porsche recommends Mobil 

[www.porschebeirut.com](http://www.porschebeirut.com)

**Only by challenging yourself  
can you become a true winner.**

### **The new 911 Carrera 4 models.**

What are we fighting for? For a drive system that inspires and a sports car that has passed the hardest test: to be the best. With the new biturbo boxer engines developing up to 309 kW (420 hp) and 500 Nm of torque. With optional rear-axle steering for more agility. The winner? The future of the sports car.

Further information at [www.porsche.com/911](http://www.porsche.com/911)



**PORSCHE**

**Porsche Centre Lebanon s.a.l.**  
Telephone 01 975 911, 03 901 911



# ZAHA HADID, 1950-2016

## AN ICON LEAVES US

*There are few figures as recognizable as Zaha Hadid. An iconic designer, architect and creative, Hadid passed away recently, leaving a big gap in the design world. The Iraq-born designer, the 'Queen of the Curve', Haddad was the Middle East's most famous design export and her buildings are famed for their curvy exteriors and designs that almost defy belief. An inspirational figure, an Arab woman at the top of her field, Hadid's passing will be mourned by all lovers of great design.*



**B**orn in Baghdad, Iraq, in 1950, Hadid studied at the American University of Beirut before moving to London and continuing her education at the Architectural Association. While a long line of incredible designs followed, her first international project of note was 1993's Vitra Fire Station in Weil Am Rhein, Germany. From there, the list of projects snowballed and included the MAXXI: Italian National Museum of 21st Century Arts in Rome, the London Aquatics Centre for the 2012 Olympic Games and the Heydar Aliyev Centre in Baku. Curves abounded and Hadid's style soon became famous and much copied, but rarely surpassed. In 2004, Hadid became the first woman to win the Pritzker Architecture Prize and she twice won the UK's most prestigious architecture award, the RIBA Stirling Prize. A visionary in every sense of the word, Hadid was a talent the likes of which we may never see again. Here, we discover some of her most impressive architectural projects.



*Glasgow's Riverside Museum*



## GLASGOW'S RIVERSIDE MUSEUM

The zinc-clad zig-zagging roof of this Glasgow edifice is evocative of the ripples of the river Clyde which it overlooks. Home to a museum of transport, the dynamic building moves and flows around the space upon which it sits. An iconic building within the city, Hadid's famous curves sit in the perfect setting.

## WEIL AM RHEIN'S VITRA FIRE STATION

The one that started it all. The Vitra Fire Station was built following a fire at the Vitra Design Campus and Hadid's commission was to design a beautiful structure that would ensure the safety of all. The small building formed Hadid's initial international statement, with soaring angles and interplays of space, line and void, Hadid's nascent style and future international acclaim was there for all to see.

*Weil Am Rhein's Vitra Fire Station*







MAXXI National Museum of the 21st Century Arts

### COPENHAGEN'S ORDRUPGAARD EXTENSION

Inspired by the lines of nature, the Ordrupgaard Extension in Denmark's capital highlights how Hadid used to pay close attention to the natural surroundings of her works as it rolls along with the nearby low hills. The garden is surrounded by panes of glass which add both privacy and a connection to the outdoors. Balancing the dimensions of the existing building, the project blends modern design with classic elements.

### WOLFSBURG'S PHAENO SCIENCE CENTRE

Wolfsburg's Phaeno Science Centre resembles nothing less than a giant iceberg. Concrete steel and glass become something else thanks to Hadid's genius. The ice-like windows and white concrete seem like a natural-built hybrid and inside a latticework ceiling and huge concrete pillars take the form of a cathedral to science.

### GUANGZHOU OPERA HOUSE

Perhaps Hadid's most famous work, the Guangzhou Opera House is a monument to design. Like a piece of crystal,



Azerbaijan's Heydar Centre

### AZERBAIJAN'S HEYDAR CENTRE

Another famous example of Hadid's work, the Heydar Centre features a large conference hall and museum as well as a gallery. The inviting architecture pulls all these pieces together, creating a warm, welcoming whole. The centre became famous when it was featured on national Azerbaijani stamps and it quickly rose to international prominence, winning the Design Museum of the Year prize in 2014.

Hadid became the first woman to win the Pritzker Architecture Prize and she twice won the UK's most prestigious architecture award, the RIBA Stirling Prize. A visionary in every sense of the world,



Seoul's Dongdaemun Design Plaza



the building rises from the urban sprawl of the city amid sharp lines, angular glass, steel and concrete. The interior is remarkably soft when compared to the outer layers and the sparkling ceiling and acoustic design make this one of the world's great music venues.

### INNSBRUCK'S HUNGERBURGBHAN

A hybrid funicular railway, each of the four stations it serves was designed by Hadid. The Hungerburg station the pick of the lot and resembles a mushroom or fungus / enameled icicle. Ephemeral but solid its curving form follows along and its glossy white surface is just remarkable. Soft, hard, organic, manmade, this is a timeless piece of architectural brilliance.

### ROME'S MAXXI NATIONAL MUSEUM OF THE 21ST CENTURY ARTS

The MAXXI National Museum of the 21st Century Arts is a flexible area dedicated 'to experimentation and innovation in the arts and architecture.' In 2010, this building of over-

lapping tubular forms won the RIBA Stirling Prize for Architecture. Since then the media has declared it 'Hadid's finest work built to date'. The curling tunnels, wide interior avenues and intersecting walk ways give the building a rhythm rarely seen in architecture today.

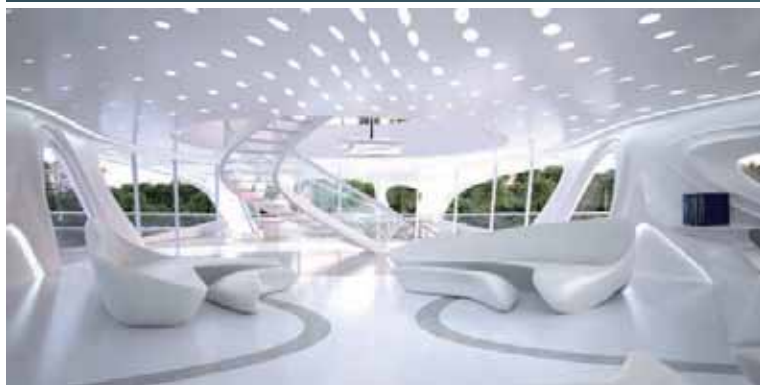
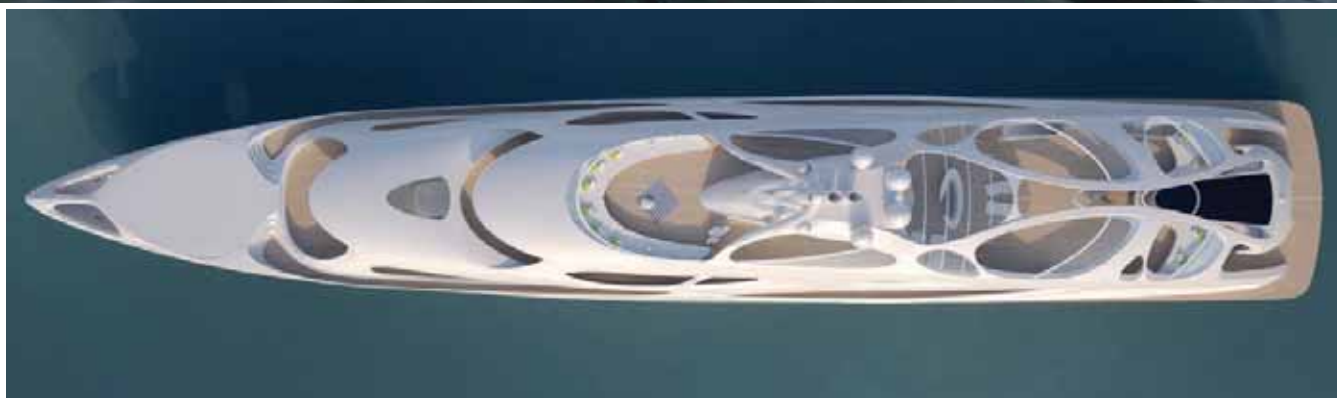
### SEOUL'S DONGDAEMUN DESIGN PLAZA

A major landmark in Seoul, South Korea, this curvaceous, striking building is an embodiment of the future. Inspired Glasgow's Riverside Museum, the building takes on the flowing forms of Hadid's oeuvre and is a design masterpiece. Soft and smooth, the building shines with light.

### MONTPELLIER'S PIERRESVIVES

One building that contains sports facilities, an archive and a library, Pierresvives is an accomplishment indeed. The geometric shapes support the tranquillity of the archives and library, while the proud, athletic projections embody sporting excellence. All the distinct elements come together in more marvellous whole.





“The prototype design is made up of fluid, dynamic lines inspired by hydrodynamic shapes and underwater ecosystems.”

#### JAZZ BY ZAHA HADID

This amazing concept design, named Jazz, is based around the sculptural form of a master prototype conceived for a 128m yacht. Designed as one of a family of five, the prototype design is made up of fluid, dynamic lines inspired by hydrodynamic shapes and underwater ecosystems. The external structure is made of a lattice that evokes feelings of nature, interconnectivity and natural marine elements. Connecting the various parts of the yacht, the exterior creates an incredible whole that makes up an incredibly capable deep-sea yacht. The design of a yacht is total, from exterior through to finishings and this elegant creation highlights Hadid's ability to think through all stages of design, from the tiniest element to the overall piece.



Puglia, Italy

N



Inspired by Puglia, we blend design, functions, materials  
and colours to create harmonious living.  
*Pasquale Natuzzi*

Free Interior Design service available in our stores.  
DOWNTOWN BEIRUT - Chafic Wazzan avenue - Tel 01 986 987

**NATUZZI**  
ITALIA

HARMONY  
MAKER



# BEST OF THE BEST

## THE REGION'S RISING DESIGNERS

*Design Days Dubai has just passed and marked one of the most impressive collections of Middle Eastern design talent we have ever seen. Designers from Saudi Arabia, the UAE, Lebanon and beyond were present and it is clear that the regional design scene is fresh, interesting and accessible. The highlights were too many to mention, but here we take a tour, discovering fantastic designers from around the region worth keeping an eye on...*

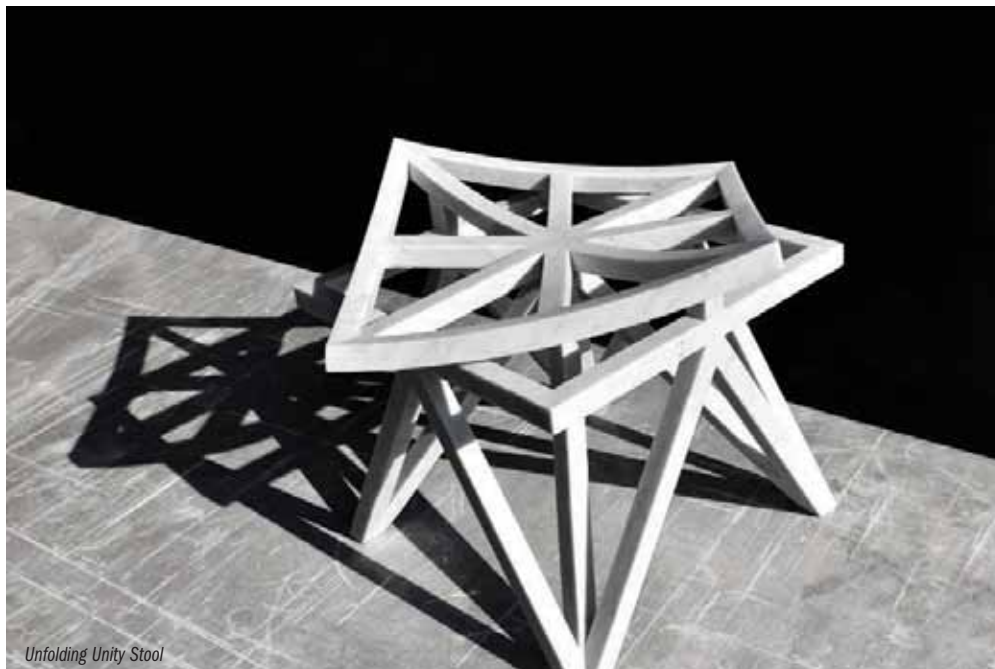


### FADI SARIEDDINE

#### Interactive Living

Fadi Sarieddine Design Studio's collections involve the concept of living with technology, the idea that we can interact with our interior pieces and that personalisation is always possible. HangOn, designed by Lilas Bitar, is a tale of loose elements playfully designed to serve a purpose without compromising on form. Conversely, The Division Belt explores the use of new materials like leather and stone and is a collaborative effort between the studio and the Dubai-based leather artisans MadebyNative. Housed in a wooden frame are eight handcrafted leather belts that loop around a wooden frame, acting as the main structure in which previously designed wooden objects are buckled in. Working with the physics of tension and compression, the insertion of each piece makes the belts stronger to hold their respective inserts. The belts are double saddle stitched in a signature MadebyNative yellow hand waxed linen thread making them more durable to hold the weight of the hanging objects.

[www.fadisarieddine.com](http://www.fadisarieddine.com)



## ALJOUD LOOTAH

### Stars in Stone

Our next stop is Dubai and the works of Aljoud Lootah. Lootah is a talented multidisciplinary designer who specialises in product design and personalised corporate gifts. Fascinated by the contrasts of form and function, Lootah designs her creations by mixing traditional silhouettes and concepts with modern elements. Patterns, folds and geometric shapes are at the heart of her inspiration. Double Square is a series of geometric furniture which takes its inspiration from traditional Arabesque patterns and motifs. The collection features a recurring Arabesque star which, when viewed from above consists of two interlocked squares. The star forms the basis of this intriguing collection, which blends traditional Arabesque elements with wonderfully modern design, creating a relevant, beautiful collection. Made from Carrara marble, the pieces are simple, modern and vibrant and work perfectly as signature elements in any given space.

[www.aljoudlootah.com](http://www.aljoudlootah.com)





## LOULWA AL RADWAN

### Limited, Individual

From Kuwait, Loulwa Al Radwan is an interior designer who has been working in the field for the past twelve years. Her interior design studio, Interia, was established in 2006, where she took mainly residential projects in Kuwait, alongside select commercial projects. Al Radwan's originality is portrayed in unique pieces of furniture and accessories that she creates for special clients during interior design projects and she has recently been inspired to start her own line of limited edition furniture and accessories, with which she participated in the Van Cleef & Arpels and Tashkeel Middle East Emergent Designer Prize in 2015, where her piece was selected as one of the four finalists. Al Radwan's style is mainly influenced by Islamic and traditional designs with a modern twist. Her most recent work is inspired by the natural beauty of peacock's feathers and the collection includes a bookshelf, a mirror and a table all made from Carrara marble and brass.

[www.facebook.com/loulwa.alradwan](https://www.facebook.com/loulwa.alradwan)

*Emiraty Shelf**Design Talk, The 8 Point Bench**Saher Oliver Samman, Woven**Anna Szonyi, IDO, Winner of Urban Comissions*

## WASL

### Celebrating the UAE

Our first highlight has to be WASL, the largest retrospective of UAE design to date. Supported by Dubai Design District (d3) and Dubai Culture & Arts Authority, WASL featured design pieces by emerging and established Emirati and UAE-based designers and makers such as Talin Hazbar, Latifa Saaed and Zeinab Al Hashemi. All the pieces were designed or produced in the UAE over the past 5 or so years and the exhibition marked a very positive milestone in the nascent UAE design scene and an indication of Design Days Dubai's role in supporting emerging local designers and acting as a catalyst to the development of Emirati design talent. Fair Director of Design Days Dubai, Cyril Zammit said: "In the 5 years since the fair's launch in 2012, the design scene has matured and fostered a new generation of designers. As a tribute to them we presented 'WASL'".

[www.designdaysdubai.ae](http://www.designdaysdubai.ae)





### KHALID SHAFAR

#### **The Agaal as Art**

The UAE's Nakkash Gallery presents *Forma*, an exploration of forms and shapes that result from connection and interconnection through a modular installation made of spherical-shape components by designer Khalid Shafar. A study of how a group of similar two-dimensional shapes can create a three-dimensional form by connecting and interconnecting all the elements together. Fluidity and continuity through the form is key in maintaining the installation's size and scale. Each component is made of 29 connected and interconnected Agaals – the black woven rope band men in the Arab world wear to secure their head covers, for a total of 348. These are linked together with wires and embedded with coloured transparent Plexiglas circular cut-outs to reflect lights through. Each component is a singular illumination object that, when added to others become a whole illumination installation.

[www.nakkashgallery.com](http://www.nakkashgallery.com)



Ayah AlBitar



Move Over Koons, Oryx balloon



King Abdulaziz Centre for World Culture



Ayah AlBitar

## SDW

### Saudi Artists at Design Days Dubai

Saudi Design Week, supported by King Abdulaziz Center for World Culture, presented a unique show of functional heritage pieces at Design Days Dubai. Exhibiting for the first time, Saudi Design Week brought a unique lineup of emerging Saudi designers - some exhibiting internationally for the first time-including Wadha Al Rashid, Ayah Al Bitar, Noura and Basma Bouzo, and Oelab X Misque. The designers explored the theme of reinventing and reinterpreting heritage as well as exploring modern day afflictions and topics relevant to the Saudi society through everyday pieces that are both functional and limited-edition collectibles. The artists included designers such as Ayah Al Bitar, Wadha Al Rashid, OELAB X MISQUE and Noura and Basma Bouzo. An exciting introduction to emerging Saudi talent, Saudi Design Week seems set to go from strength to strength, further inspiring design talent within the region.

[www.saudidesignweek.com](http://www.saudidesignweek.com)





# THE GREAT OUTDOORS

## GET INSPIRED AND STEP OUTSIDE

*We at Splendida love the sunshine and can't wait to step outside. While touring around one of the world's biggest design fairs, Salone del Mobile in Milan, we spotted some of the outdoor trends worth experiencing. Get inspired, but most importantly of all, get outside!*



### AN EYE CATCHING COCOON

Mbrace is an eye-catching, instantly likable collection of chairs — wingback, lounger, rocker and optional footstool — that captures the spirit of barefoot luxury while extending the Dedon design language into new, more Nordic territory. Mbrace fully lives up to the welcoming gesture invoked by its name. One experiences a warm, secure, cocooning feeling when being embraced by the chair's extra-wide back, especially after a cool dip in the pool and in late in the season, after Mbrace's luxurious seat cushions have been stored away.

[www.dedon.de](http://www.dedon.de)



## CREATING LIGHT AND SHADES

DNA is an outdoor furniture collection inspired by a subtle game of the light and shade modulations typical of the Mediterranean and a eulogy to the aesthetic of the shadow as understood in traditional and contemporary Japanese architecture: the positive and the negative free from any superfluous ornament. Manufactured using an anodized or powder coated aluminum profile, available in an anodized finish or range of colors; white, sand, bronze and anthracite which support the seating and back rests of polyurethane foam upholstered with water-proof fabric.

[www.gandiablasco.com](http://www.gandiablasco.com)





#### PUNCHED WITH STYLE

NET is fiber-glass resin monocoque painstakingly punched with a pattern of square and rounded slots, which are evenly distributed over the three-dimensional surface of the seat, thereby revolutionizing the production and styling canons of Nardi so far. The perfect decorative mesh of the body appears matt, slightly rounded and extremely pleasant to touch, while its edges are bordered by a rectangular-section ribbon that encourages you to rest your arms on it, and seamlessly proceeds to mark out the chair legs.

[www.nardigarden.com](http://www.nardigarden.com)



### A MAJESTIC APPROACH

Cala is a high backed armchair with a majestic spatial presence with transparent and light surfaces. The open weave of the rope provides a latticed window for visual privacy while maintaining a connection to the natural elements. The wide selection of metal coatings, rope colors and cushion fabrics offer many possibilities to tailor the identity of the chair to suit different projects. Cala's seat frame is made from coated aluminum sections. The weave is knitted rope. The chair comes with two options of teak legs or an aluminum pedestal base.

[www.kettal.com](http://www.kettal.com)





### A FLORAL GALAXY

Missoni's classic lines and stripes are coming to the outdoors with a remarkable range of floral bouquets and borders in fresh and intense tones that interchange perfectly with the strong and bright stripes that the brand is so famed for. The waterproof fabrics shift from vibrant sheens to substantial opacity in radiant palettes both on patterned fabrics and on very special plains, bringing Missoni's world-famous chic to outdoor furniture and a bringing a touch of style with it.

[www.missonihome.com](http://www.missonihome.com)

A woman with long brown hair, wearing sunglasses and a white short-sleeved dress, is walking on a light-colored patio. To her left is a swimming pool with blue water. Several large, round, cushioned poufs in various colors (white, grey, blue) are scattered around the pool area. The scene is brightly lit, suggesting a sunny day.

### THE GARDEN NOMAD

Part of the new contemporary Garden Furniture collection from Tribu, the Nomad Garden Pouf designed by Monica Armani is a beautiful addition to the outdoor space, giving the feeling of luxury and comfort. The Nomad can be used as a side table, footrest or extra seat as the firm filling is very comfortable and supportive.

[www.tribu.com](http://www.tribu.com)

SP



# BEIRUT REAL ESTATE TREND WATCH

## FULL-SERVICE LUXURY APARTMENTS DEBUT AT LE YACHT CLUB - BEIRUT

*Beirut, a major metropolitan city and Middle Eastern tourism hub, has its fair share of high-end real-estate options for the region's jet set crowd.*

With the number of new, towering luxury condos and boutique properties on the rise, real-estate developers are increasingly trying to offer more unique amenities and services to lure the most elite buyers. Only a few developers in the city have fully embraced one of the newest global trends in luxury living: full service luxury apartments that combine five-star hotel services with lavish private residences. The developers of the highly anticipated Le Yacht Club – Beirut, set to open this spring, is looking to fill that niche with its full service residences.

Le Yacht Club – Beirut has been generating considerable buzz among the country's business and social upper crust.

It's primarily known to the public as a members-only, seaside social and dining club and one of the newest destinations for luxurious recreation. However, few realize that the membership benefits go far beyond access to the stunning pool deck or high-end luxury spa. Le Yacht Club – Beirut is not only a wonderful place to spend an afternoon or a posh evening out, but a select few will also be able to live at Beirut's newest premier address.

Located at the Beirut Marina, past the glitzy Zaitunay Bay development and just off one of the city's most prestigious strips of waterfront property, Le Yacht Club – Beirut offers members the opportunity to live a full service luxury lifestyle and with a stunning view on the side. Resident members will have complete and unhindered access to all of the Club's high-end luxury services, including private dining, the sunny





sea-side infinity pool deck, private health club, salon and day spa, the latter run by internationally acclaimed Sisley.

What could be more relaxing after a hectic workday than handing your car off to the valet and heading straight to the chic lounge for an expertly crafted cocktail? Although you could prepare a gourmet meal at your Le Yacht Club – Beirut residence, you could simply head downstairs and enjoy a sumptuous meal in one of Lebanon's most exclusive fine dining restaurants. Imagine waking up and simply strolling downstairs for your Saturday morning hair appointment or a session with a personal trainer in your own on-premise Health & Wellness center. If you have a few out-of-town guests visiting, treat them to the ultimate hospitality by booking one of the Club's equally lavish guest suites just down the hall. Life at Le Yacht Club – Beirut gives each of its resident members an almost royal experience.

Le Yacht Club – Beirut's features over forty deluxe, executive residences that seamlessly blend high-end style with the ultimate luxury of convenience. Members can choose 1, 2 or 3 bedroom apartments in two distinct interior styles: timeless or avant-garde. The latter incorporates black basalt and copper accents into a well-designed space featuring modular hide-away furniture for total ease and comfort, while the more traditional timeless residences showcase wooden floors and regal white marble. Every detail has been considered in these fully equipped "smart" residences, with an easy to navigate touch screen operation panel.

While the precise floor plans of residences vary, the suites feature a private sleeping area with a king-sized bed, bathroom with a sunken bath, walk-in closet, and fully equipped kitchen, along with a dining space and separate seating area.

**Le Yacht Club Beirut is where full luxurious services are offered to you, with an incomparable view on the side.**

Residences are fully furnished, including all kitchen furnishings and modern appliances such as dishwasher, oven, microwave, washing machine, dryer, ventilation hood, and refrigerator.

Le Yacht Club – Beirut is redefining luxury living in Lebanon. The full service residences are only the beginning of what the Club will bring to Beirut's coastline.



<http://www.leyachtclubbeirut.com/>





# ANTONISA, PASQUALE NATUZZI'S YACHT

## PERFECT BALANCE OF BEAUTY AND HARMONY

*Sailing yacht Antonisa is the result of the synthesis of many factors: great passion, professional and handicraft skills, close attention to details, valorisation of the tradition and searches of the innovation, a stylistic direction able to draw a unique and recognizable design all over the world.*

**T**he Antonisa is a masterpiece of technology, but it is first and foremost an ambassador of beauty and harmony. It has often received recognition all over the world, and has won significant international awards such as Best Sailing Yacht at Showboats International in 2000, the year the Antonisa was launched.

The Antonisa combines Pasquale Natuzzi's passion for the sea with his idea of style and beauty - immediate, pure and strong. It is a harmonious blend of Italian taste, US design and construction, fine materials to make it welcoming, along with futuristic instruments which make it safe and easy to handle.

### NEW ON THE BOAT: INTERIOR AND SAILS

Between autumn 2006 and spring 2007, the Antonisa was refurbished by its owner, making it even more welcoming and closer to Pasquale Natuzzi's style.

The yacht underwent a long period of aesthetic "honoring" which focused on bringing the interior of the boat closer to the simplicity of verist tradition, which is as it should be for a boat used so frequently by the owner to host relatives and guests.

The yacht's interior now features very soft and fluid wood interiors which surround guests with warmth. The colours are pale and the finishes simple. The clearest sign of change is the removal of the pipe organ which dominated the dinette by the fireplace, rousing the curiosity of guests. Clear, straightforward and substantial changes to turn the yacht into a faithful interpretation of the owner's stylistic preferences.

The modernisation also affected the boat's power units, for both transmission and sail movements.

A new 500 HP engine, combined with a 7,500 litre diesel tank, mean a sailing of over 3,000 miles, approximately 5,600 kilometres.

The sails are also brand new. The Spanker (430 m<sup>2</sup>) and Genoa (220 m<sup>2</sup>) were both made using modern 3DL technol-

ogy, which ensures lightness, sturdiness and an appropriate shape to guarantee the best sailing performance levels. The sails have a black core, the colour of the carbon used to make them, but appear to be snow white due to the colour of the surface finishes used.

The two new sails are accompanied by 3 new lightweight spinnakers designed to catch the wind with their large dimensions, the largest being 850 m<sup>2</sup>.

### THE BOAT

Designer Bruce King drew a yacht of a considerable size, 123 feet long, 38 metres - well over the 30 metres considered to be the limit between a maxi yacht and a super maxi yacht, and 7.8 metres wide.

Despite these large dimensions, the yacht still features a truly elegant balance, owing to its flush deck concept, i.e. a boat without a deckhouse, the convenient yet bulky superstructures on the deck which would have detracted from the aesthetic line of the super maxi yacht.

The elegance of the boat was also achieved thanks to its sail plan, supported by a single mast, instead of the usual two or three masts which could easily have fitted onto the deck of the Antonisa.

Opting for a single mast that can support the 1,300 m<sup>2</sup> of sails featured on the Antonisa meant it was necessary to design and build a 171 foot (52 metre) mast, the tallest carbon fibre mast ever built in the world. A very high-tech solution, just like the large boom capable of winding and containing the huge spanker as well as the electronic anchor retrieval system designed to be housed below deck to ensure greater stability and so as not to alter the elegant lines of the hull.

The Antonisa also boasts a certain technical device which enables it to enter ports with shallow waters and to extend the sliding keel beneath the boat in open waters in order to sail more quickly: a hydraulic mechanism withdraws the keel into a housing beneath the boat in order to have a minimum









## ANTONISA FIGURES

Launch	1999
Length	38 m.
Width	7.8 m.
Mast	52 m.
Draft	3 to 8 m.
Spanker	430 m2.
Genoa	220 m2.
Gennaker	850 m2.
Max. number of people on board	24
Water	4,000 litres
Diesel	7,500 litres
Displacement	180 tons







draft of 3 metres and a maximum draft of 8 metres.

Like all super maxi yachts, it is exceptionally spacious, making it very comfortable both above and below deck.

The interior of the Antonisa is made with the finest woods: teak, red cedar wood, yellow cedar wood, American red cherry wood and mahogany.

## THE BOAT'S HISTORY

The Antonisa is the result of a dream and plenty of hard work. The dream was conceived in the 1990s when Pasquale Natuzzi imagined building a truly beautiful high-quality boat.

During several meetings with the famous boat designer, Bruce King, the project began to take shape along its essential lines. An intense and lengthy discussion between Bruce King, who provided his excellent design skills, and Pasquale Natuzzi, who set out the stylistic values, led to the definition of the final project for the Antonisa.

The yacht was built by Hodgdon Yachts, an historical and prestigious shipyard in Maine, USA, that has built high quality boats with the utmost care and attention for ship-owners throughout the world since 1816.

To complete the Antonisa project, the Hodgdon Yachts shipyard used almost 60 specialists and craftsmen over 5 years, a team which undoubtedly exceeded a headcount of 100 if you consider designers, sailmakers and all the other professionals required to put together the super maxi yacht and achieve its current beauty and charm.

## THE LAUNCH

The launch of the Antonisa, which took place on 28th August 1999, was a genuine event for the whole community of East Boothbay Village, in Maine. All the shipyard's employees and freelancers who worked on the project, designers, and the entire community guided by local authorities looked on as the super maxi yacht took to the waters of Linekin Bay for the first time.

Over 4,000 people decided to toast a boat which testified to the professional pride of an entire town - if not of an entire region - that has always built highly prestigious boats for the whole world.

Father Lou Phillips of the St. Paul Center christened the Antonisa in an atmosphere of general euphoria, a far cry from the usually insular world of big sailing boats, following the speeches made by the heads of the shipyard, the designer, local authorities and the ship-owner. This was followed by a huge party with music and dancing (on dry land) and a ballet and mime performance held on the deck of the Antonisa. In short, to celebrate the super maxi yacht waving the Italian flag that represents the state of the art in the world of sailing and demonstrate their gratitude, a small town decided to restore the festive customs reserved for the sailing ships launched 100 years ago.

On the occasion of the launch, the owner, Pasquale Natuzzi spoke to the shipyard workers: "I am sincerely and whole-heartedly grateful to you. You have achieved a masterpiece of quality in building the Antonisa. You should be proud of your work and this pride must be passed on to your children. You have achieved an example of what the world



needs: cutting-edge technology combined with the brilliance of the human touch and the manual dexterity of great craftsmen".

After the launch, the boat was fitted out and equipped with cutting-edge technologies, and after successfully completing all relevant trials, it entered Italian waters on 13th June 2000.

## PREVIOUS BOATS

Pasquale Natuzzi has a long history of involvement with the sea and with boats, two passions which take up the majority of his spare time and summer holidays.

Before the Antonisa he sailed the Whitefin, another sailing boat designed by Bruce King, for a long time. His previous boat also ranked alongside the Spirits of Tradition and with its 90 feet, 27 metres, it guaranteed fast sailing throughout the world. Pasquale Natuzzi worked his way up to large boats gradually and before Whitefin he sailed the Freedom, a 52-foot (approx. 15-metre) Grand Soleil.





# LUXURIOUS BERTHS

## OUR GUIDE TO GREAT MARINAS

*Here we take a look at some of the finest marinas in and around our part of the world. From an exclusive spot in Monaco to an ultra-modern Turkish marina, these offer some of the finest nautical experiences you can find anywhere.*



### PALMARINA YALIKAVAK, TURKEY

A popular spot among the jet set, Palmarina Yalikavak lies along the Turkish Riviera on the Southern Aegean and is close to Bodrum. Palmarina Yalikavak hosts world-class yachts, great restaurants including a Nobu, luxury boutiques and the aptly named Billionaire's Club nightclub. The Palmarina Bodrum Boutique Hotel sits nearby and visitors can shop among brands such as Vilebrequin and Armani and a 114-store mall. With a fun park for children, beach clubs, a heliport, fitness centres and a spa and duty free shopping, there is most definitely plenty to do. The marina itself has space for approximately 700 vessels, 69 of those being for yachts of 40 metres and above. With an incredible climate and surrounding natural beauty, Palmarina Yalikavak offers up considerable technical services for yacht owners including haul-out services for yachts up to 260 tons and a modern, extensive boatyard. The marina was recently redeveloped and was completed in stages, providing visitors and the local communities with a range of services. The central island area houses the retail outlets, restaurants and the yacht-related amenities and the entire project strove to respect the region's architectural heritage and the natural environment; aligned along a grid, travertine stone masses rise from the body of the complex, merging with the natural backdrop and creating a modern, complimentary setting. The communal areas of the marina look out on shaded walks that feature colonnades and shops rest behind glazed volumes.



Porto Montenegro ranked 1st, above well established Mediterranean marinas such as Porto Cervo in Italy and Puerto Banus in Spain.

## PORTO MONTENEGRO

The superyacht directory Yachting Pages recently published a list of its Top 10 new superyacht marinas and Porto Montenegro ranked 1st, above well established Mediterranean marinas such as Porto Cervo in Italy and Puerto Banus in Spain. This is clearly a serious establishment. Porto Montenegro is the Mediterranean's leading luxury yacht home-port and marina village. The state-of-the-art facility has been designed to cater to the advanced needs of all yachts, their owners, guests and crew with specific infrastructure for the largest yachts afloat. The marina currently has 450 berths, 228 sold-out luxury apartments, as well as 55 units of ground floor retail made up of restaurants, bars, cafes, shops and amenities and a five star Regent Hotel with over 80 luxury suites and apartments. Key to the marina's ratings success was the recently addition of a 250-metre berth, which exceeds the largest superyacht berths of One Ocean Port Vell in Barcelona and Grand Harbour Marina in Malta. With the largest superyacht currently afloat measuring 180-metre, and the giant 220-metre Double Century soon to enter the water, Porto Montenegro is clearly leading the pack. Porto Montenegro was the first comprehensive state-of-the-art deep water marina in the Adriatic Sea and was formerly a naval base, but its redevelopment has been stunning and is but part of the rehabilitation of the coast, with an 18-hole golf course under development not too far from the marina. Already home to an international community, Porto Montenegro offers collection of waterfront and promenade homes, Nautical Village, a collection of entertainment venues, day clubs and pools.







### DUBAI MARINA YACHT CLUB

Dubai Marina Yacht Club is nestled within the heart of the city. The UAE's best private yacht club boasts a purpose-built clubhouse surrounded by distinctive marinas, offering a wealth of activity, entertainment and tranquillity. With a range of formal and informal dining outlets and marina facilities there is something for everyone. Set upon an impressive 3.5 km canal, the marinas provide sheltered berthing for over five hundred yachts and the marina's 'Rally Programme' gives berth holders an exclusive opportunity to explore regional yachting destinations and join the regular series of workshops and seminars with fellow yachtsmen. The dining options are impressive: the Aquara restaurant is a unique dining destination where East meets West; land meets sea. Enjoy al fresco dining on the panoramic terrace while taking in the breath-taking sight of moored yachts. For a pre or post-dinner beverage, unwind at the award-winning Aquara Lounge for a very special evening where you can enjoy panoramic views of the Dubai Marina. Named after Dubai's nautical co-ordinates, 25°55' Café Bistro encompasses Dubai's unique marina heritage, finally YOTS Sports Lounge is the ideal spot to catch up on all the latest sporting screened on multiple TV screens. Accessible, varied and set in the middle of Dubai, the Dubai Marina is a haven for yacht owners and those aspiring to require a berth of their own.



Enjoy al fresco dining on the panoramic terrace while taking in the breath-taking sight of moored yachts.





### PORT HERCULES, MONACO

Hercules Port is a natural bay at the foot of the ancestral rock of the princes of Monaco. It is one of the few deep water ports on the French Riviera and was used as a trading port by the Greeks and Romans and these days is famous for its luxurious yachts and jet-set life-style. Located opposite the Monaco Grand Prix track, berths in Port Hercules are among the most prestigious and sought after berths in the world, not only to view the fast paced Grand Prix but throughout the summer when countless superyachts visit Monaco. The marina is well maintained and is efficiently run and though it has been extended, the harbour is still relatively small for a population of 35,000 residents. For rentals, priority is given to the 8,000 Monaco nationals and after them, Monaco residents. There are long waiting lists and your application to rent will not even be considered if you are not a native or a resident.



Port Hercules are among the most prestigious and sought after berths in the world, not only to view the fast paced Grand Prix but throughout the summer when countless superyachts visit Monaco





FEATURE





# SPRING INTO SUMMER WITH BEAUTIFUL HAIR AND SKIN

## LOOK YOUR BEST WITH SIX SIMPLE TRICKS

*As we move into summer now is the perfect time to consider your skincare regimen. Your skin changes over the year as we move through the seasons and once we understand the processes, skin can be treated accordingly. Here we highlight a few key steps to maintaining healthy, touchable skin that will take you in to summer looking and feeling great.*

### 1 FACIAL MASKS

Once a week you should be applying a facial mask. A facial mask is essentially an exfoliation cover that you apply, allow to dry and then remove. When a mask is peeled from the face, it removes dead skin, debris and oils, opening pores and hydrating your face. Hunt around for the perfect mask, many of the better ones contain essential oils and other goodness that helps with anti-aging and can make you look more youthful.

### 2 TONERS: REJUVENATE YOUR COMPLEXION

We all get the occasional blemish on our face, but there are some steps we can take to reduce the frequency with which it happens. A toner is a chemical solution which will cleanse, moisturize, and balance the pH levels of your skin by combating excessive oil production which will in turn improve your complexion. This process will also open up your pores, meaning that more moisturizer will get deeper into your face, improving your overall hydration.

### 3 EXFOLIATE OVER THE WEEK

Exfoliating is the removal of dead skin cells from your face and should be done every other day, with a mild exfoliating scrub. Pay attention to what is known as the T-Zone, the chin, nose and forehead as dead skin can build up quickly. Exfoliated skin can better absorb moisture and feels better as any small lumps and bumps can also be removed, leaving your face feeling smooth and soft.

### 4 THE IMPORTANCE OF SUPERFOODS

Superfoods tick all the dietary boxes, rich in antioxidants, minerals, and vitamins, they can aid in detoxification of the body, which in turn will lead to healthier skin. Make sure you have enough vegetables in your diet as they contain high levels of iron, phytonutrients, and vitamin K, which fight off wrinkles to maintain youthful skin. Reduce the amount of dairy, gluten and sugar in your diet and replace them with green or raw foods.

### 5 APPLE CIDER VINEGAR

Product build up in your hair can create a sense of weight and lifelessness and a weekly rinse with apple cider vinegar is the perfect, cheap, way of giving yourself a quick cleanse and getting the shine back. Using it is simple, tilt your head back, pour some on and massage it in. Leave it for a minute or so, ignore the smell and then rinse it out.

### 6 TAKE SUPPLEMENTS

Adding skincare supplements to your regimen is a simple step. With an active lifestyle, everyone can benefit from taking vitamins B3, C, E, and K, they all remedy several facial flaws, from dryness to redness, and vitamin A improves skin tone. Finally, fish oil with its high omega levels can help to reduce body-wide inflammations.





# AN EDIBLE TOUR

## DISCOVERING GREAT FOOD

*We recently had the pleasure of spending time with food blogger Anthony Rahayel of NoGarlicNoOnions. Just back from a long tour of Europe, Rahayel shared his experience of some of the finest dining options available throughout this gastronomic continent. Come with us as we discover the best of the best.*





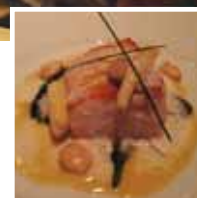
### L'ATELIER DE JOEL ROBUCHON, PARIS, FRANCE

L'Atelier de Joel Robuchon opens for lunch or dinner spread over two bars joined together with one kitchen. Serving modern French and European fare, it's a haven for food lovers. With an attentive staff and an imaginative chef, this is somewhere you just have to try. You just have to try their l'agneau de lait and their Foie Gras. A full tour of their menu will cost around €179.



### PATRICK GUILBAUD, DUBLIN, IRELAND

Having featured in everything from the Irish Times to the New York Times, Patrick Guilbaud is renowned as one of the best restaurants in Ireland and is also internationally acclaimed. The restaurant is divided into five different sections: A private room with its single oval table that can host up to ten guests, the welcoming salon, the service bar, the dining space and the terrace. Be sure to try their pan roasted native red deer and the lacquered challahs duck.



### RESTAURANT ALEXANDRE, CAMARGUE, FRANCE

In warm and refined surroundings, the restaurant revolves around three dining rooms and a library and a sitting room that gives direct access onto the terrace and the garden. The modern French and European food is to die for, all served in a modern, clean fashion. You just have to try the pan-seared gambas camerone tails and the roast pigeon breast. Amazingly for a contemporary fine dining establishment, the portions are quite large, which is always a plus.



### BURGUNDY, BEIRUT, LEBANON

Rahayel swears that Beirut's entry on this list is worth at least two Michelin Stars. If you're a connoisseur and a seeker of strong sensations, Burgundy is the place for you. With a strong Asian theme running throughout the menu, Burgundy focuses on fresh food. With many plates including raw, or rare meats, fresh fish and pure, clean fruit and vegetables, this is a restaurant that keeps things simply complex.



### SAVARIN, OOSTENDE, BELGIUM

The menu here was designed by Chef Laurent Vandekerckhove is varied and will appeal to everyone. Verging on a Michelin Star, Savarin is below the radar of most food lovers and is well worth a visit. Modern, French-inspired dishes take the breath away and we have to recommend the anguille fumée and the sole meniere. A classic setting hosts some fantastically modern creations.





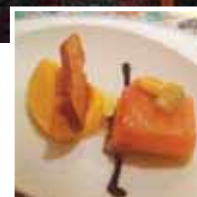


### LA BASTIDE SAINT ANTOINE, GRASSE, FRANCE

La Bastide Saint-Antoine in Grasse is surrounded by grounds spanning five hectares with lush Mediterranean vegetation set amidst olive groves, offering up views of the surrounding plains and the Bay of Cannes. This is modern French fare at its very best. Authentic, sometimes over the top flair shines through, but the food is remarkable and you cannot leave without trying Le Papillon de Langoustines, L'Escalope de Foie Gras Dorée or the Le Millefeuille de Pommes Sautées.

### RELAIS AND CHATEAUX HUNTING LODGE, LOIRET, FRANCE

Relais and Châteaux Hunting Lodge is an award winning Two Michelin-starred restaurant located in a magnificent 19th century chateaux. Divided into different spaces, diners can enjoy a more contemporary setting or a classic fine-dining environment. The set menu is just fantastic and offers up modern French cuisine cooked to perfection, but sure to leave some space for the incredible cheese trolley.

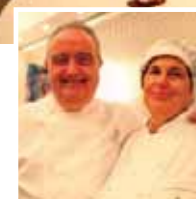


### LES MENUS, MOSCOW, RUSSIA

Les Menus, in Moscow, presents the bold and experimental cuisine of Michelin three-star chef Pierre Gagnaire, regarded as one of today's most innovative and artistic chefs. Classic French cuisine with a modern twist and culinary artistry at its finest create an unforgettable feast for all the senses. The menu offers up mussel soup, langoustines, fresh pasta, potatoes, lobster, squid, beef, pork and more and just has to be tried if you are ever in the Russian capital.

### IL LUOGO DI AIMO E NADIA RISTORANTE, MILAN, ITALY

A two-Michelin starred restaurant, this is the perfect place to enjoy authentic Tuscan cuisine, this a small place with modern art on the walls, but an ancient history. Try the suckling pig or the various local dishes that incorporate mushrooms if you want a real treat. To finish off go for the chocolate mousse, the fox grape soup of the vin burl sorbet while the owners and chef tour the dining area making sure all is going well.



### GRAND CHEF RELAIS AND CHÂTEAUX, DIDIER CLEMENT, LOIRET, FRANCE

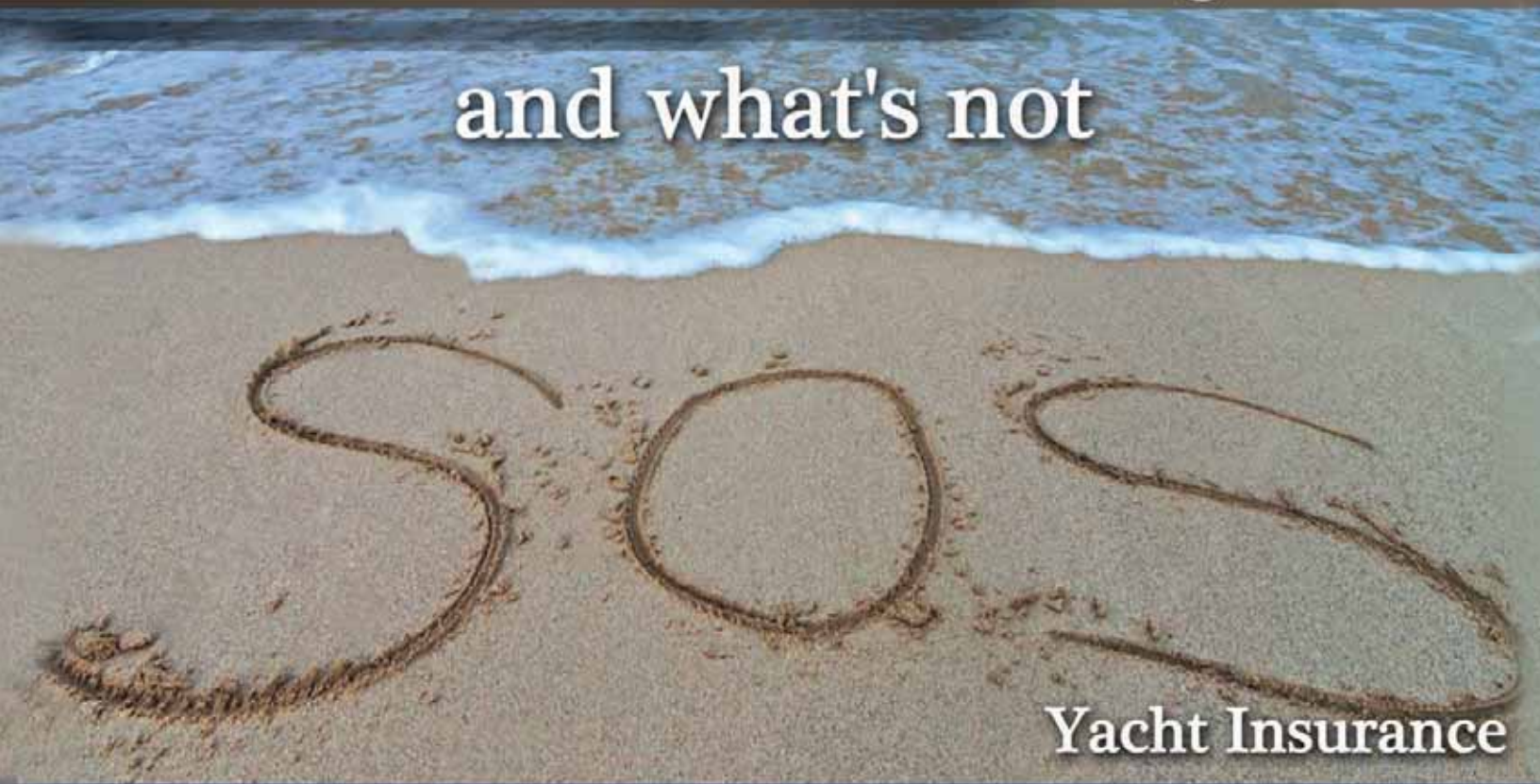
Grand Chef Relais and Châteaux, Didier Clement is inspired by the chef's personal experiences in the Sologne region. From a light, an impression, a colour, a smell, he creates subtle and sincere dishes, surprisingly balanced and harmonious. Clement re-discovered old varieties of herbs, vegetables and spices and has gardeners working especially for him. This is authentic French cuisine, presented in a modern fashion.







There's a thin line between what's granted ...  
and what's not



Yacht Insurance



Management Office

Sin El-Fil Blvd, Freeway Tower, Beirut, Lebanon  
P.O.Box: 90/1247, Jdeideh, Lebanon

Tel: 01-511995  
Fax: 01-511996

since 1973

info@northassurance.com  
www.northassurance.com



# PHOENICIA INTERCONTINENTAL HOTEL

PHOENICIA HOTEL, FOREVER A LANDMARK



**R**oyalty, world leaders and celebrities have all made Phoenicia their preferred residence throughout the decades. Today it continues to be the luxury address from which to discover the unique and diverse cultural aspects of this vibrant city of Beirut.

Overlooking the Mediterranean Sea with its majesty and grandeur, Phoenicia Hotel Beirut stands proudly at the heart of Lebanon's capital, a few minutes from the city's business and banking district, the major shopping areas and exciting downtown.

Phoenicia Beirut is the address from which to start your journey, your home of comfort and style, your gateway to downtown Beirut, your spectacular view over the marina and the Mediterranean, as well as the place where your personal concierge ensures your stay excels beyond your expectations. Everything you need is around you: non-stop nightlife to suit your every musical taste, the complete feelgood, indulgent Spa experience, and culinary delights from across the world, capturing the flavours of everything from street markets to fine dining.

From your base at Phoenicia Beirut, discover the changing natural landscape of mountains to seashore in the ideal

Mediterranean climate; feel invigorated in a destination that combines the dynamism of the innovative glamorous lifestyle of Lebanon's capital with the wild authentic treasures of a country that has welcomed visitors since the birth of the first global trade routes.

Phoenicia Hotel Beirut's newest addition of Presidential Suites combines cutting-edge technology with the supreme comfort of an elegant, spacious lifestyle. The latest innovative service for all guest rooms and suites includes complimentary access to original video art works from one of the world's largest collections through an ongoing collaboration with Videolnsight® Foundation.

Summer travelers can expect an extra special vacation thanks to a family-friendly package including special rates on family suites. Carefree summer days are ahead as we take care of the planning part for you with a special kids' programme that will give your children the opportunity to enjoy fun-filled activities suited for their age group, in a safe atmosphere, for your peace of mind.

At Phoenicia Hotel expect your stay to over deliver and become part of history in the making as the next chapter of Phoenicia the legend is written.



PHOENICIA

BEIRUT

INTERCONTINENTAL  
HOTELS & RESORTS

TRULY BEIRUT

+961 (0) 1 369 100    [WWW.PHOENICIABEIRUT.COM](http://WWW.PHOENICIABEIRUT.COM)    [WWW.INTERCONTINENTAL.COM](http://WWW.INTERCONTINENTAL.COM)



# LE VENDÔME INTERCONTINENTAL BEIRUT

EXPERIENCE LIFE AT THE HIGHEST LEVEL OF LUXURY



**T**he intimate Le Vendôme has for years provided a home away from home experience for royalty, celebrities and dignitaries from around the globe with the highest level of luxury and exceptional service. Ideally situated to enjoy Beirut's great attractions, many of which are within a short walking distance.

Le Vendôme's luxurious accommodation and facilities provide both leisure and business travellers the opportunity to experience impeccable personalized service, blending world-class cuisine with local flavours at one of the finest restaurants in Beirut, Sydney's Club Bar & Restaurant, which has remained one of the city's most fashionable entertaining destinations since it opened in 1996.

Le Vendôme also offers an elegant French styled banquet and conference salon fully equipped with the latest audio-visual technology, ideal for private business functions or lavish dinner gatherings.

Rediscover the Middle East's original cosmopolitan culture and legendary hospitality, and experience life at the highest level of luxury.







LE VENDÔME  
BEIRUT


INTERCONTINENTAL  
HOTELS & RESORTS



TIMELESS ELEGANCE

+961 (0) 1 369 280    [WWW.LEVENDOMEBEIRUT.COM](http://WWW.LEVENDOMEBEIRUT.COM)    [WWW.INTERCONTINENTAL.COM](http://WWW.INTERCONTINENTAL.COM)





DESTINATION

## DISCOVER WITH SPLENDIDA: AMALFI COAST... LIFE IN COLORS

*Imagine yourself sitting on top of a coastal mountain plunging beautifully into the Turquoise Sea in a vertically shaped scene of picturesque forests, colorful towns and asymmetrical crags...yes this the gripping drama of Amalfi coast, the Mediterranean coastal gem. Now expect to be enchanted!*





## A TRIP TO THE PAST

Amalfi's origin dates back to the first century A.C. when the Roman aristocracy built luxurious villas in this area. Amalfi, and its surrounding towns became afterwards well developed and cultured communities. Amalfi prospered mainly because of the rich commerce opportunities with many other populations around the Mediterranean Sea. Amalfi owned a powerful fleet of ships, and had strong marine traditions, and laws (Tabula de Amalphi). Today, Amalfi still maintains old fishing traditions, and has a number of fully functional fishing boats. Amalfitans are also very proud of one of their most famous mariners, Flavio Gioia, who was attributed the perfection of nowadays marine compass.

Amalfi Coast has been isolated until recent times and was only reached by sea. The Amalfi Coast Road known as the Amalfi Drive was later constructed in 1815 by Ferdinand II of Bourbon which allowed more visitors to reach the area. Amalfi Drive is the only road that runs along the coast, and connects all the main resorts from Positano in the West to Vietri sul Mare in the East.

Today, Highway 163 stands for a trip along the coastal road, also known as the "Nastro Azzuro" or Blue Ribbon because of the color of the sea, which is always in sight.



*Praiano's picturesque open sea views*



"The road clings to the cliff-face, climbing past headlands and dipping down to the sea to reach tiny fishing villages."

*Ravello*





Many artists, composers, writers, poets and celebrities chose Amalfi as their all-time best retreat until the 1950s. Today it has become one of Italy's major tourist attractions with thousands of visitors aiming to discover the beauty of this vibrant land.

### A TYPICAL MEDITERRANEAN CLIMATE

Amalfi Coast in the Campania region of southern Italy has the typical Mediterranean climate. The weather turns quite hot in summer; cool and damp in the winter. It can be foggy along the coast in winter, although there will also be bright, sunny days.

The best time to visit is April-June and September-October, when temperatures are the most pleasant.

### GETTING TO AMALFI COAST

The nearest airport is Naples Capodichino, approximately 60km from the Amalfi coast. Visitors can then reach Amalfi by train, taxi, bus or can enjoy a road trip by car until they reach the coastal road and enjoy the "Nastro Azzuro".

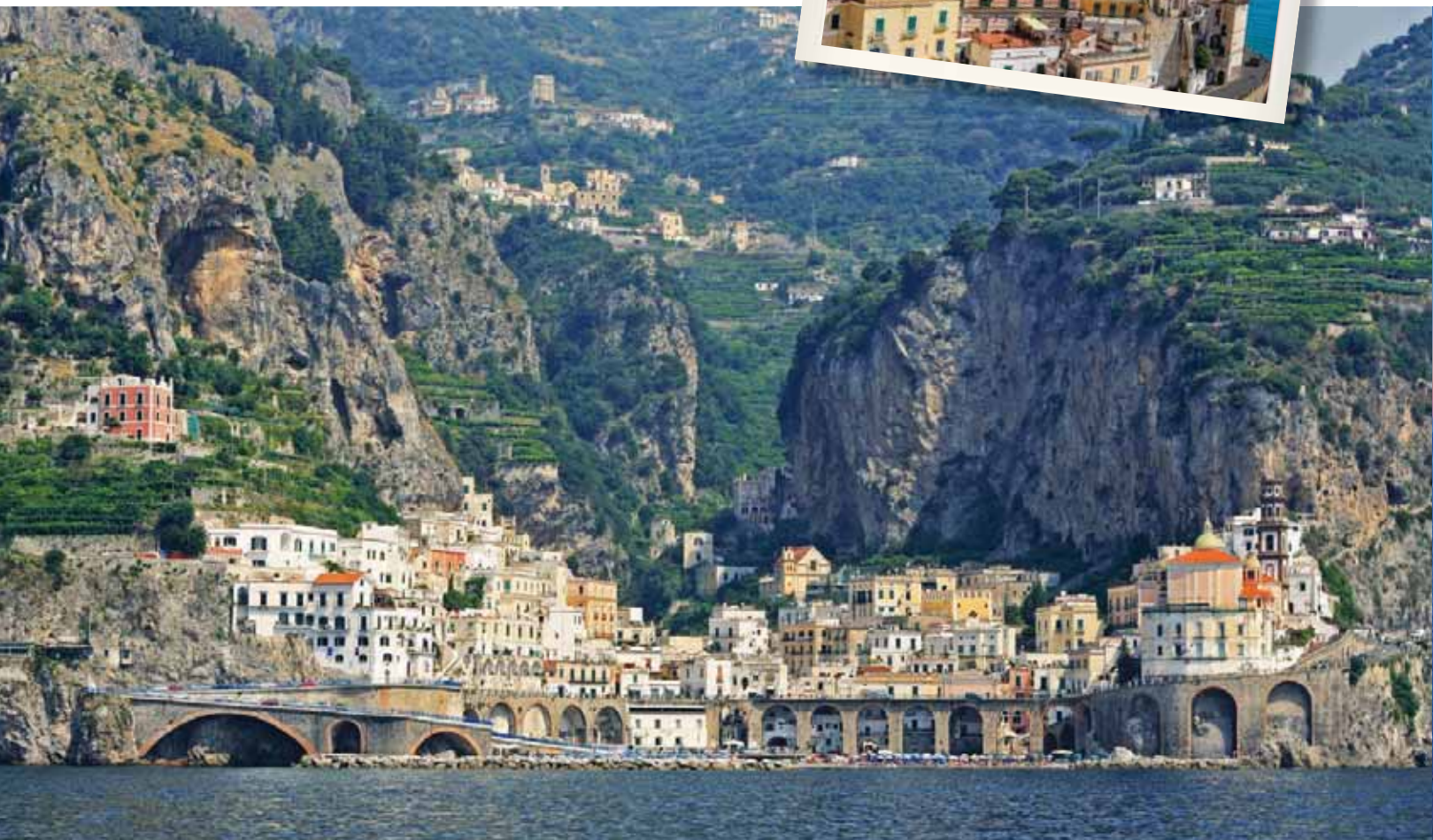
### ACCOMMODATIONS & SUGGESTED START POINT

The Amalfi Coast offers quiet and picturesque seaside resorts, apartments and villas. Amalfi visitors can savor further excursions to places as interesting and varied as Pompeii, Herculaneum, Vesuvius, Capri, Ischia and Sorrento.

The Sorrentine Peninsula between Positano and Sorrento separating the Gulf of Naples to the north from the Gulf of Salerno to the south, is one of the most well-known international tourist sights. Surrounded by luxuriant hills, the site of patrician villas during Roman times has preserved its old charm as well as being the ideal starting point for visiting all



*Atrani: a typical amalfi view*







tourist sites of the area (Capri, Ischia, Naples, Pompei, Positano, Ravello, Amalfi).

## MAIN TOWNS

### Atrani

Located 700 m away from the famous Amalfi Atrani, the town is marked by its serene atmosphere. The main entrance to the town starts from the beach, you can then spot colorful houses, lemon terraces and gardens climbing up the steep mountain valley, a typical Amalfi view. Atrani, with its open sea location, holds a famous square where tourists can enjoy a drink in its pubs or a succulent meal in one of its famous restaurants.

### Positano

Known as the Classy and genuine town, Positano is located in one of the most beautiful valleys of Amalfi, opening up to an amazing coastline. At the center of the town you can see the brightly colored "maiolica" dome of Santa Maria Assunta, and the main church of Positano featuring a collection of intriguing works of art from the XIII, and XVI century.

A shopping alert: Three words: 'Positano Fashion Style'

that's why Positano remains the hub where tourists from all over the world flock to the diversified boutiques of this town every summer to shop the best Italian Styles.

### Praiano

Praiano's stands for the ancient name Pelagium meaning open sea, it is the fisherman town overlooking not only the sea but also Positano town and its suburbs. The "Sentiero degli Dei" (Walk of the Gods) is a famous hike that starts from Praiano and reaches Agerola, giving hikers the chance to enjoy the best views of the Amalfi Coast.

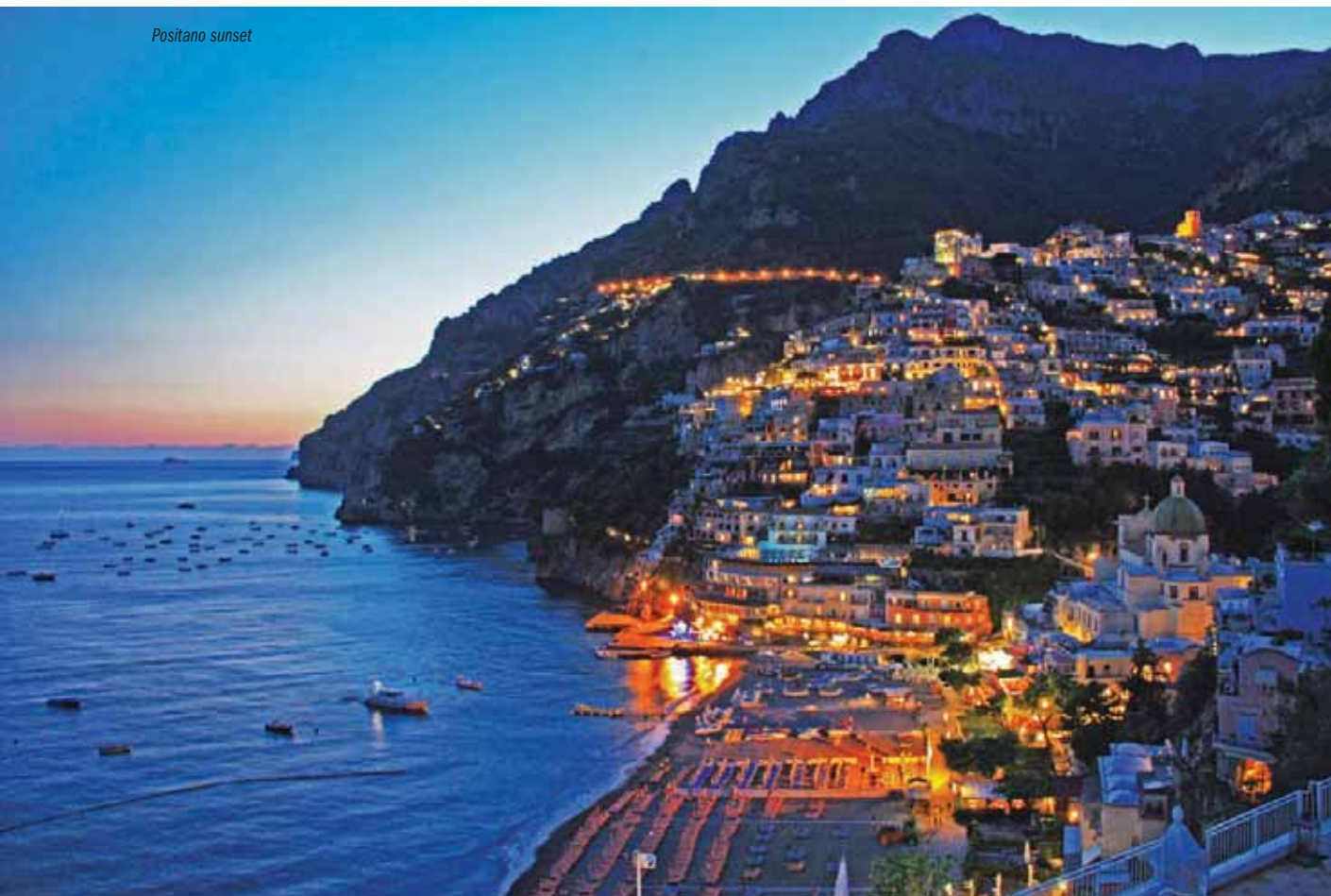
When you reach Praiano make sure you don't miss San Luca, the famous church with its typical majolica tiles dome and paintings of famous artists.

### Ravello

Ravello, known as the garden town, is located at the top of the Dragone Valley enclosing endless numbers of amazing views, and traditional architectural monuments.

The most famous architectural monuments in Ravello are Villa Cimbrone and Villa Rufolo, which represent perfectly what Amalfi Coast is all about.

*Positano sunset*







Minori is marked by southern Italian architectural monuments



### Minori

Minori's name derives from the ancient Latin name "Rheginna Minor" that came from the river Rheginna, which still runs through the valley of Minori.

Some major attractions to be visited in this town are the ancient roman villa and the Basilica of Santa Trofimenia, the churches of Santa Lucia, San Gennaro and San Michele as well, great examples of southern Italian architecture.

## SPORTS AT AMALFI COAST

### Water Sports

Tourists can enjoy a wide variety of fun yet thrilling waters sports from Scuba diving to kitesurfing, windsurfing, Jet Ski, kayaking, stand-up paddle tours and fishing tours.



All towns offer the best gastronomic delicacies, designer ceramics and glamorous beachwear.

### Golf at Amalfi

In Pontecagnano, just 40 km from Amalfi, golf enthusiasts can find the Golf Club Salerno where a clubhouse, bar, pro shop and equipment rental service are available.

- The club consists of nine uncovered positions, and five covered, putting green, chipping green, a path three-hole par 11 and bunkers.

The Volturmo Golf of Castel Volturmo located in Via Domitiana in Napoli offers as well a luxurious clubhouse with bar, pro shop, equipment rental and a storage.

- The club consists of 18-hole golf course that winds through 50 acres of rolling terrain, full of dunes and water obstacles: a journey extraordinarily evocative, with the first nine holes immersed in the pine forest and the back nine built on sandy ground near the sea.

The Mirabella Golf Club of Mirabella Eclano, in the province of Avellino, just 1 hour and a half by car from the most famous locations of the Amalfi Coast is also a golf hub with all required services available.

- The course, a nine-hole one with approval of the standard Italian Golf Federation, has a total length of 3'700 meters, par 62, and is equipped with double tees for each hole.

## RETREATS

Most of the hotels at Amalfi boast luxurious spas where visitors can enjoy thermal retreats, yoga retreats, Manicures, Pedicures and footbaths.

After a relaxing retreat what's better than a delicious meal at one of the numerous Michelin restaurants dispersed on the coast?

From a history engraved to a natural incomparable beauty, endless activities and recreations; between a blue ribbon trip, yellow lemon terraces and pink houses, lies a multicolor coast and a whole life in colors...



# Business is pleasure



New Legacy 500 Interior

## Private Jet Charter - VIP Aircraft Handling

With its professional staff, modern equipment, spacious lounges and the **new state-of-the-art Legacy 500 aircraft**, Cedar Executive brings in new levels of luxury, service and safety to the corporate aviation sector.







#### MASTERCRAFT X2 - 2014

- Ilmor 5.7L OPS 320 HP (Gaz)
- > Price: \$ 145,000

NEW



#### MASTERCRAFT X-STAR - 2013

- Ilmor 6.2L OPS 430 HP (Gaz)
- > Price: \$ 140,000



#### REGAL 2300 - 2015

- Mercruiser 350 Mag. MPI 300 HP (Gaz)
- > Price: \$ 101,000 TTC

NEW



#### SUNSEEKER HAWK 31 - 1997

- Single Cabin
- Twin Volvo D3 190 HP (Diesel)
- > Price: \$ 85,000



#### RIVA 33 GITANO - 1995

- Single Cabin
- Twin Volvo 330 HP (Gaz)
- > Price: \$ 87,000



#### SUNSEEKER SUPERHAWK 50 - 2002

- Single Cabin
- Triple Yanmar 6LY 420 HP Each (Diesel)
- > Price: \$ 210,000



#### PERSHING 50.1 - 2012

- 3 Cabins + 1 Crew
- Twin MAN 800 HP (Diesel)
- > Price: € 685,000



#### PRINCESS V52 - 2010

- 2 Cabins
- Twin CAT C12 715 HP (Diesel)
- > Price: € 435,000



#### PRINCESS V57 – 2013

- 3 Cabins + 1 Crew
  - Twin Volvo Penta D13 900 HP (Diesel)
- > Price: £ 710,000



#### PERSHING 62 – 2015

- 2 Cabins + 1 Crew
  - Twin MTU 1500 HP (Diesel)
- > Price: € 1,900,000



#### FERRETTI 731 – 2008

- 4 Cabins + 2 Crew
  - Twin MAN 1550 HP (Diesel)
- > Price: € 1,500,000



#### FERRETTI 650- 2015

- 3 Cabins + 1 Crew
  - Twin Caterpillar C18 1150 HP (Diesel)
- > Price: € 1,500,000



#### SUNSEEKER 75 - 2004

- 4 Cabins + 1 Crew
  - Twin MAN 1500 HP (Diesel)
- > Price: \$ 1.275.000



#### RIVA DUCHESSA 92 -2013

- 4 Cabins + 3 crew
  - Twin MTU 16V M93 2435 HP (Diesel)
- > Price: € 4,500,000



#### CUSTOM LINE 97 - 2008

- 5 Cabins + 3 Crew
  - Twin MTU 16V M93 2400 HP (Diesel)
- > Price: € 3,600,000



#### CUSTOM LINE 97 – 2009

- 5 Cabins + 3 Crew
  - Twin MTU 16V M93 2400 HP (Diesel)
- > Price: € 3,800,000



# SEA PROS BRANDS

YOUR DREAM. OUR PASSION



Itama

Riva



SEABOB

